



## 29 Springfield Road, Billericay - CM12 0PP

£330,000 Leasehold

Spacious GROUND FLOOR two bedroom maisonette, internally offering lounge, fully fitted kitchen, generous bedrooms and modern shower room with the benefit of your own front and rear gardens with garage and parking.  
Council Tax Band: C ~ EPC Rating C



**tyler estates**

01277 626181

[www.tylerestates.co.uk](http://www.tylerestates.co.uk)





## Entrance Hall

## Lounge

12' 1" x 15' 0" (3.68m x 4.58m)

Bright and spacious with window to the front.

## Kitchen

10' 2" x 11' 11" (3.11m x 3.62m)

Fully fitted with integrated appliances and door leading to the rear garden.

## Bedroom 1

10' 4" x 12' 6" (3.14m x 3.81m)

Fitted wardrobes with sliding doors.

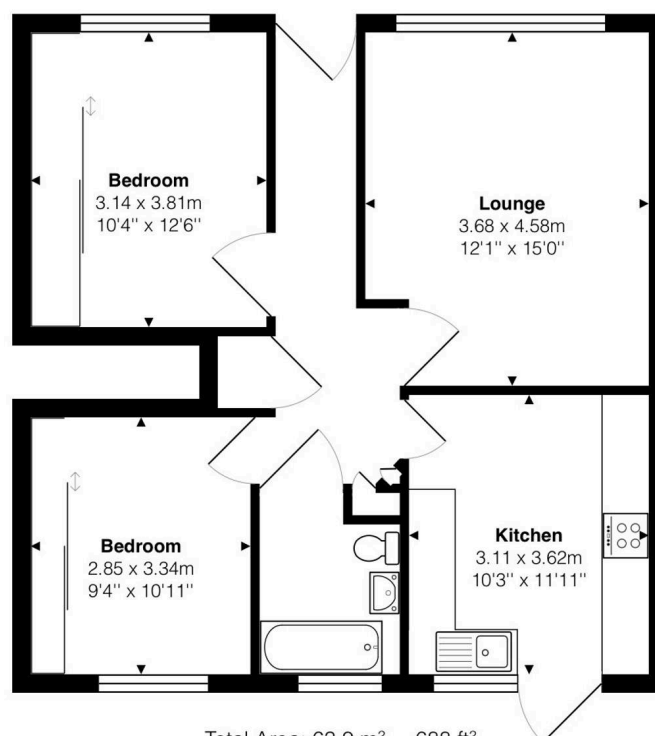
## Bedroom 2

9' 4" x 10' 11" (2.85m x 3.34m)

Fitted wardrobes with sliding doors.

## Bathroom

Bath with shower over and screen. Wash hand basin and WC in vanity unit.



Total Area: 63.9 m<sup>2</sup> ... 688 ft<sup>2</sup>

Measurements are approximate for illustrative purposes only and may have been taken from the widest area  
Floorplan Copyright The Estate Agents Photographer  
[www.theestategentsphotographer.co.uk](http://www.theestategentsphotographer.co.uk)