

57 High Road North, Laindon - SS15 4DH

£460,000 Freehold

This warm, inviting 3-bedroom semi-detached house is a true gem. The beautifully presented 1940's property boasts a block-paved drive providing parking at the front and has been tastefully updated in 2017. Step inside to discover a light-filled haven with spacious rooms featuring approx. 8ft high ceilings.

Council Tax band: D ~ EPC Energy Efficiency Rating: D



tyler estates

01277 626181

www.tylerestates.co.uk



Entrance Hall

Lounge

13' 5" x 12' 0" (4.08m x 3.66m)

Dining Room

13' 0" x 11' 0" (3.96m x 3.35m)

Kitchen

13' 0" x 7' 0" (3.96m x 2.14m)

Conservatory

9' 8" x 14' 4" (2.94m x 4.36m)

Cloakroom/Utility

Landing

Bedroom One

13' 5" x 11' 0" (4.08m x 3.35m)

Bedroom Two

13' 0" x 12' 0" (3.96m x 3.66m)

Bedroom Three

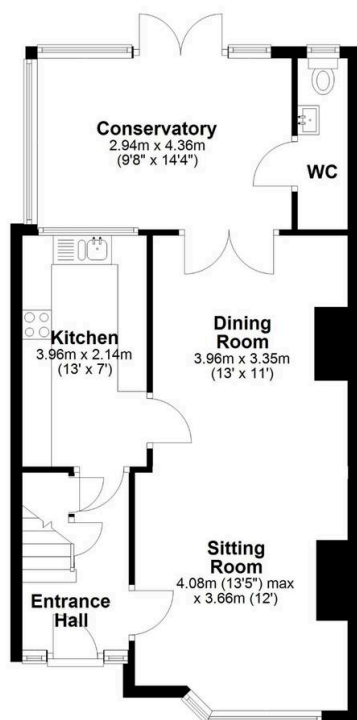
8' 2" x 7' 0" (2.50m x 2.14m)

Family Bathroom

9' 11" x 6' 0" (3.01m x 1.83m)



Ground Floor



tyler estates

APPROX INTERNAL FLOOR AREA 103 SQ M (1110 SQ FT)

This floorplan is for illustrative purposes only and is **NOT TO SCALE**
All measurements are approximate **NOT** to be used for valuation purposes
Copyright Tyler Estates 2025

First Floor

