



## Mayfield Dunton Road, Basildon – SS15 4BU

£900,000 Freehold

This outstanding 4 bedroom detached house epitomises luxury living, offering a spacious layout perfect for a growing family. Boasting four generously sized bedrooms, including two ensuite bathrooms, a ground floor cloakroom, and a family bathroom, this executive residence provides ample living space.

Council Tax Band: TBC ~ EPC Energy Efficiency Rating: C



**tyler estates**

01277 626181

[www.tylerestates.co.uk](http://www.tylerestates.co.uk)



### Entrance Hall

**Lounge** 14' 2" x 10' 8" (4.31m x 3.25m)

With media wall allowing space for a large television.

**Dining/Family Room** 16' 11" x 13' 7" (5.16m x 4.13m)

With under floor heating and a wood burner.

**Kitchen/Breakfast Room** 10' 8" x 20' 0" (3.25m x 6.09m)

With quartz worksurfaces, integrated appliances including two eye-level ovens (one a combination microwave), fridge & dishwasher.

**Play Room / Study** 11' 5" x 7' 4" (3.48m x 2.23m)

**Utility Room** 11' 10" x 9' 0" (3.60m x 2.74m)

**Cloakroom** with a wash hand basin and W.C.

### Landing

**Bedroom** 16' 11" x 12' 0" (5.16m x 3.66m)

**En-suite** 6' 4" x 8' 8" (1.94m x 2.64m)

**Bedroom** 10' 2" x 14' 7" (3.09m x 4.45m)

**En-suite** 7' 6" x 8' 0" (2.28m x 2.44m)

**Bedroom** 10' 8" x 10' 6" (3.25m x 3.21m)

**Bedroom** 10' 8" x 10' 8" (3.25m x 3.26m)

### Family Bathroom

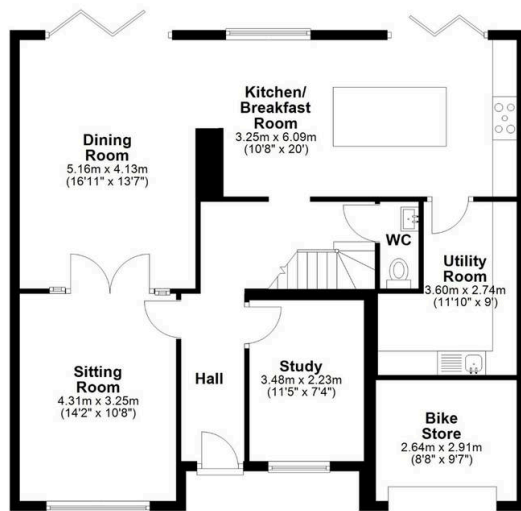
With its walk shower, beautiful bath with middle taps, wash hand basin.

**Garden Cabin** used as an office/play room or further storage.

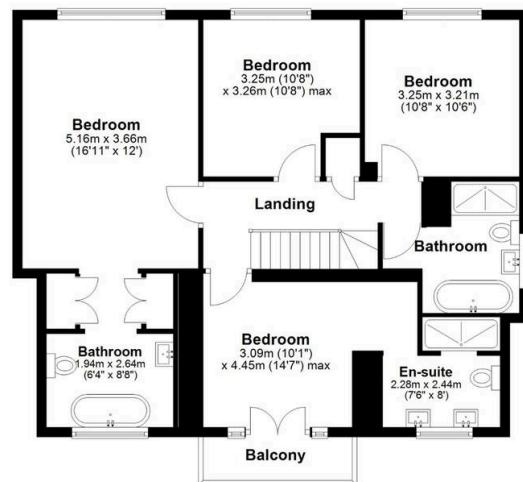


tyler estates

Ground Floor



First Floor



APPROX INTERNAL FLOOR AREA 180 SQ M (1940 SQ FT) (Includes Bike Store)

This floorplan is for illustrative purposes only and is **NOT TO SCALE**  
All measurements are approximate **NOT** to be used for valuation purposes  
Copyright Tyler Estates 2025

