

65 Bridge Street, Basildon - SS15 4AY

£525,000 Freehold

Stunning 3 Bed Detached House featuring spacious interior, large lounge, family kitchen diner, ensuite main bedroom, modern bathroom, single garage, peaceful rear garden with patio area and oak trees. Perfect blend of functionality and charm for comfortable living.

Council Tax band: E ~ EPC Energy Efficiency Rating: C



tyler estates

01277 626181

www.tylerestates.co.uk



Hallway

Lounge: 13' 3" x 11' 9" (4.05m x 3.58m)

As you enter this room your eyes are drawn to the deep bay window to the front. With carpet underfoot, this room is a great place to relax after a hard days work.

Kitchen/ Diner: 20' 11" x 13' 3" (6.37m x 4.05m)

Newly fitted in 2016 providing a modern style kitchen with a large peninsula giving plenty of usable worktop space and generous storage options.

Cloakroom

Beautifully finished ground floor cloakroom with WC

Bedroom One: 10' 4" x 9' 11" (3.16m x 3.01m)

Newly decorated main bedroom with its own en-suite offers generous built in wardrobes and is situated to the rear of the home overlooking the garden.

En-suite: 9' 1" x 3' 5" (2.76m x 1.04m)

Refitted in 2022. Rainfall shower with handheld attachment.

Bedroom Two: 11' 2" x 9' 5" (3.40m x 2.87m)

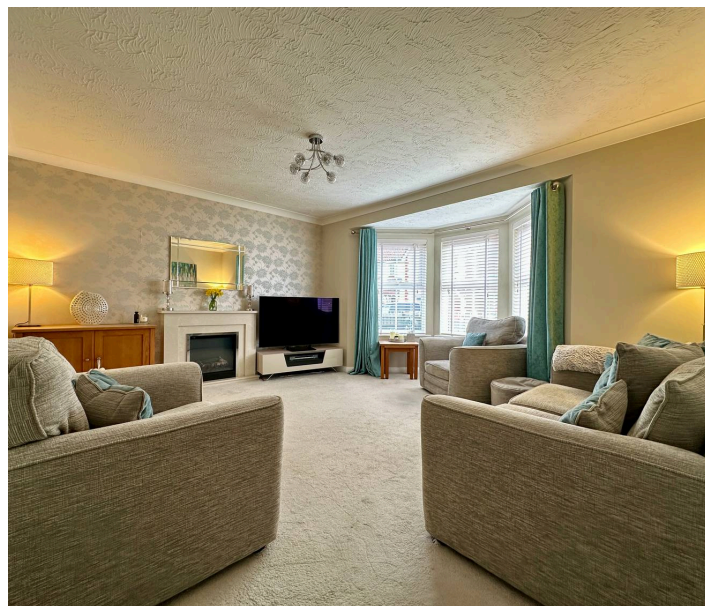
Spacious second double bedroom to the front of the home

Bedroom Three: 9' 7" x 9' 6" (2.92m x 2.90m)

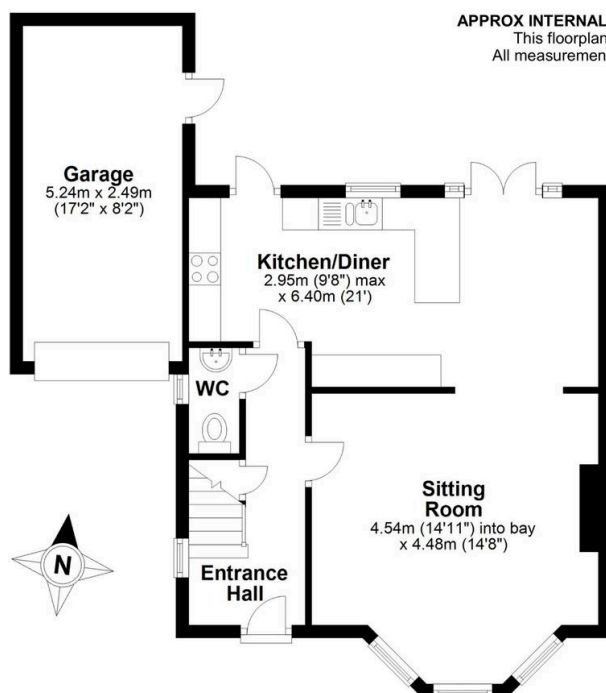
A good size room for a third bedroom

Bathroom: 6' 11" x 6' 3" (2.10m x 1.90m)

Refitted in 2022 to provide a full length 'P' shaped bath with fitted rainfall shower over and hand held shower attachment



Ground Floor



tyler estates

APPROX INTERNAL FLOOR AREA 101 SQ M (1080 SQ FT) (Includes Garage)
This floorplan is for illustrative purposes only and is **NOT TO SCALE**
All measurements are approximate **NOT** to be used for valuation purposes
Copyright Tyler Estates 2025

First Floor

