



118 Church Street, Billericay - CM11 2TR

Offers in excess of £700,000 Freehold

Attractive four bedroom detached house set in this beautiful part of Great Burstead with views of St Mary Magdalene church and wonderfully established approx. 80ft garden with water feature and summer house to the rear. Full of charm and character throughout it must be seen to be appreciated.

Council Tax band: F ~ EPC Energy Efficiency Rating: D



tyler estates

01277 626181

www.tylerestates.co.uk



Entrence Hall

Sitting Room

17' 5" x 11' 7" (5.30m x 3.54m)

Dining Room

9' 5" x 10' 7" (2.87m x 3.23m)

Kitchen

15' 0" x 8' 10" (4.57m x 2.68m)

Utility Room

8' 4" x 7' 8" (2.55m x 2.34m)

Cloakroom

Landing

Bedroom One

14' 5" x 11' 7" (4.40m x 3.54m)

En-suite

Bedroom Two

11' 1" x 10' 7" (3.38m x 3.23m)

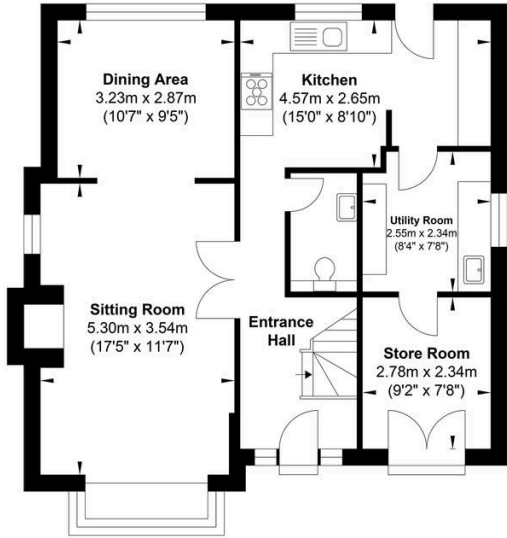
Bedroom Three

14' 0" x 7' 8" (4.26m x 2.34m)

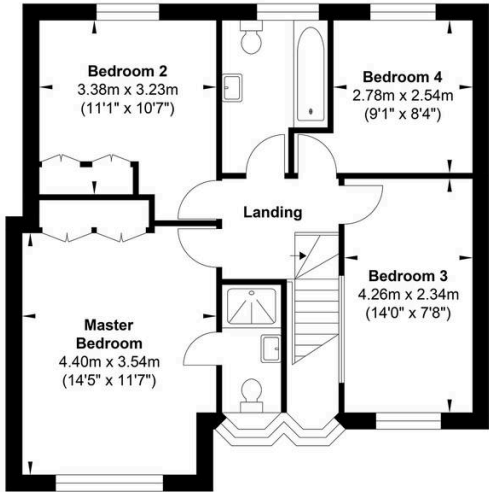
Bedroom Four

9' 1" x 8' 4" (2.78m x 2.54m)

Bathroom



Ground Floor



First Floor

Gross Internal Floor Area : 128.0 m2 ... 1379.0 ft2

Whilst every attempt has been made to ensure the accuracy of the floor plan contained here, measurements of doors, windows, rooms and any other items are approximate and no responsibility is taken for any error, omission, or mis-statement. This plan is for illustrative purposes only and should be used as such by any prospective purchaser. The services, systems and appliances shown have not been tested and no guarantee as to their operability or efficiency can be given.