



51 Allington Court Outwood Common Road, Billericay - CM11 2JB

£135,000 Leasehold

Retirement bliss awaits in this top floor 1-bed apartment with stunning communal garden views. Over 55's complex offers lift access, laundry room, and social lounge. Service charges approx. £200 pm.

Council Tax band: B ~ EPC Energy Efficiency Rating: C



tyler estates

01277 626181

www.tylerestates.co.uk



Entrance Hall

Lounge

13' 3" x 11' 2" (4.05m x 3.40m)

Kitchen

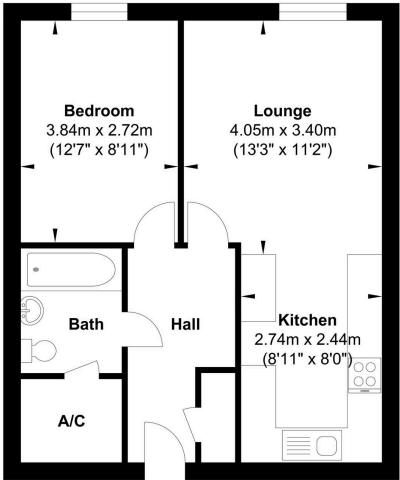
9' 0" x 8' 0" (2.74m x 2.44m)

Bedroom

12' 7" x 8' 11" (3.84m x 2.72m)

Bathroom

7' 1" x 5' 9" (2.16m x 1.75m)



Gross Internal Floor Area : 47.8 m2 ... 515 ft2

Whilst every attempt has been made to ensure the accuracy of the floor plan contained here, measurements of doors, windows, rooms and any other items are approximate and no responsibility is taken for any error, omission, or mis-statement. This plan is for illustrative purposes only and should be used as such by any prospective purchaser. The services, systems and appliances shown have not been tested and no guarantee as to their operability or efficiency can be given.