



35 Radford Court, Billericay – CM12 0AB

£265,000 Leasehold

Offered with No Onward Chain this first floor two bedroom apartment has spacious rooms throughout and is in a great location being a short stroll away from Billericay train station and the High Street. There is also the added convenience of a garage in the block.

Council Tax band: C ~ EPC Energy Efficiency Rating: C



tyler estates

01277 626181

www.tylerestates.co.uk



Hall

Lounge

18' 4" x 11' 5" (5.60m x 3.48m)

Kitchen

11' 5" x 7' 11" (3.48m x 2.42m)

Bedroom one

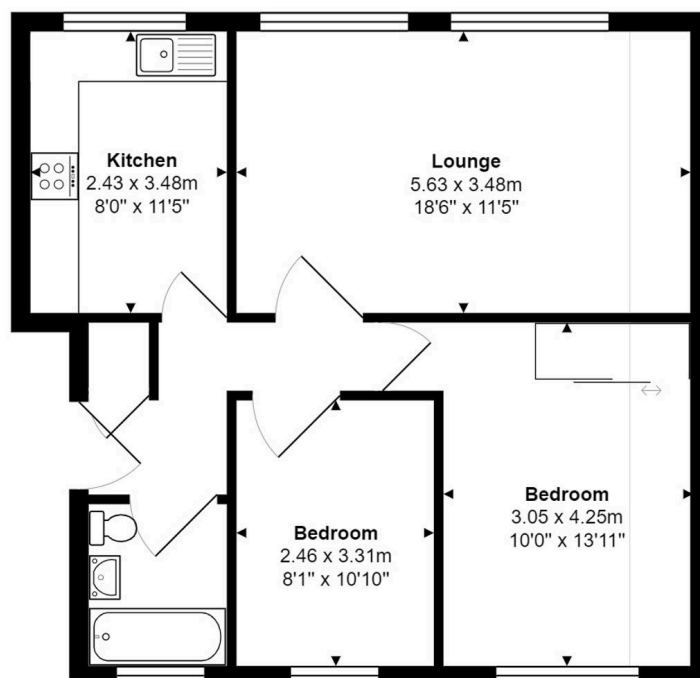
13' 11" x 10' 0" (4.24m x 3.05m)

Bedroom two

10' 10" x 8' 0" (3.31m x 2.45m)

Bathroom

6' 6" x 5' 7" (1.99m x 1.70m)



Total Area: 60.9 m² ... 656 ft²

Measurements are approximate for illustrative purposes only and may have been taken from the widest area
Floorplan Copyright The Estate Agents Photographer
www.theestatesagentsphotographer.co.uk