



46 Allington Court Outwood Common Road, Billericay - CM11 2JB

£150,000 Leasehold

Situated on the first floor, with lift access and overlooking the communal gardens, is this well decorated one bedroom apartment for the over 55s, with the bonus of fitted furniture to the bedroom,

Council Tax band: B - EPC Energy Efficiency Rating: C



tyler estates



Entrance hallway

Storage heater and storage cupboard.

Lounge

13' 1" x 11' 2" (4.00m x 3.41m)

Storage heater, double glazed windows overlooking the gardens, warden careline appliance with emergency pull cord.

Kitchen

9' 0" x 8' 0" (2.75m x 2.43m)

Ample wall and base units, stainless steel sink and drainer, cooker with extractor over, fridge/freezer and washing machine.

Bedroom

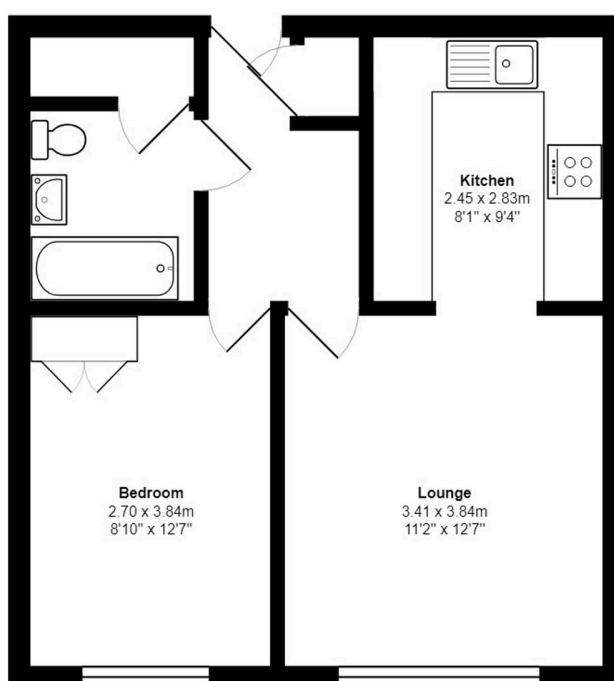
12' 8" x 8' 11" (3.86m x 2.71m)

Fitted wardrobes, with double glazed window overlooking the gardens.

Bathroom

7' 1" x 5' 8" (2.15m x 1.72m)

A new modern bathroom including an electric shower within cubicle, white vanity unit with wash hand basin and w.c. The walls are fully tiled and there is a built in cupboard, handy for storage. Spotlights to the ceiling, vinyl flooring and extractor fan fitted. A pull cord for the Careline system is within the bathroom.



Total Area: 41.6 m² ... 448 ft²

Measurements are approximate for illustrative purposes only and may have been taken from the widest area
Floorplan Copyright Equinox Energy Performance Certificates
www.energyperformancecertificates.biz