



8 Elsted Crescent

Brighton, BN1 8GE

**Guide price £450,000**



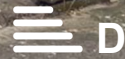
3



2



1



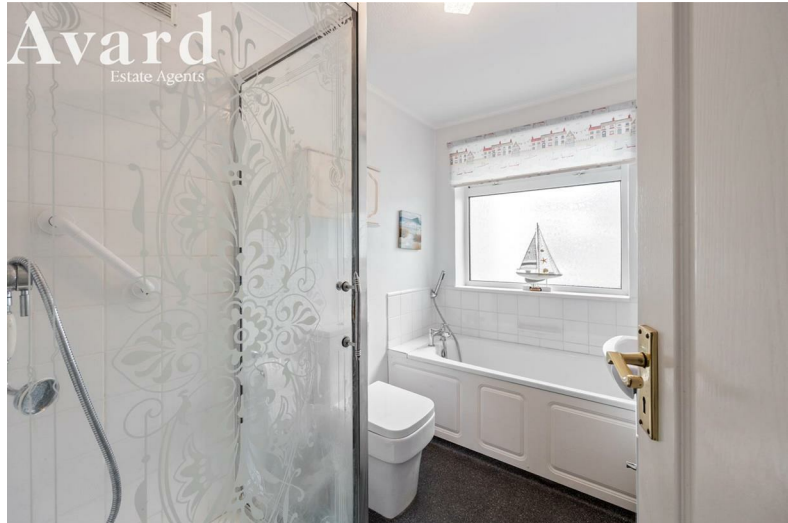
D

# 8 Elsted Crescent

Avard  
Estate Agents



Avard  
Estate Agents



## Description

Guide Price £450,000-£475,000

Nestled in the charming Elsted Crescent of Brighton, this delightful 3 bedroom semi-detached house offers a perfect blend of comfort and convenience. Boasting three well-proportioned bedrooms, this property is ideal for families or those seeking extra space.

One of the standout features of this residence is the breathtaking views of the South Downs, providing a picturesque backdrop that enhances the overall appeal of the property. The absence of an onward chain simplifies the buying process, allowing for a smoother transition into your new home.

Additionally, the property includes a garage, offering valuable storage space or the potential for a workshop. Situated close to highly rated schools, this location is particularly advantageous for families prioritising education.

- 3 Bedrooms
- No Onward Chain
- Large Rear Garden
- Garage
- 1960s Built
- Close To Highly Rated Schools, Transport Links And Amenities
- En Suite Shower Room
- Amazing Views Across Brighton And Towards The South Downs

Avard  
Estate Agents



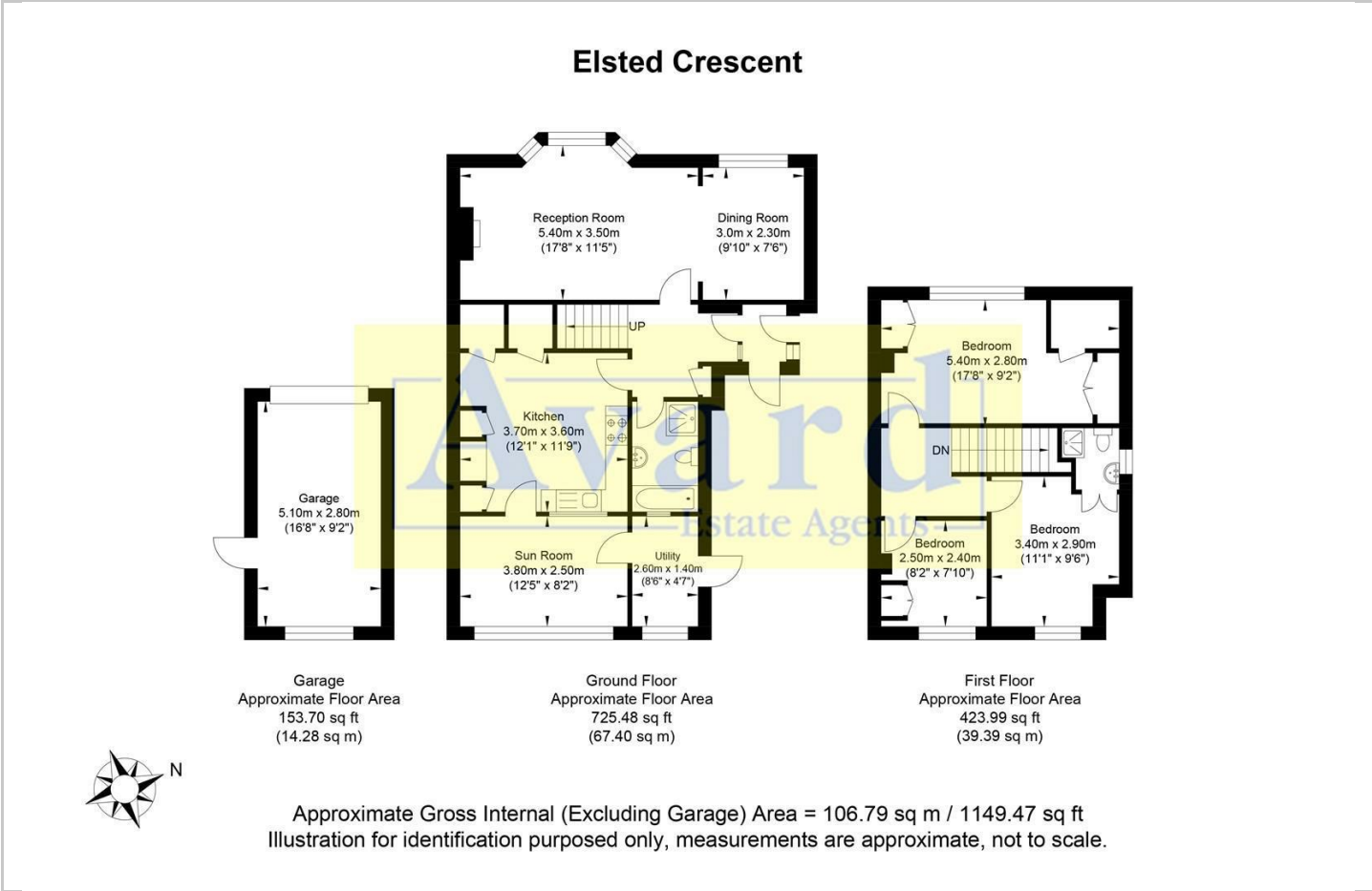
Avard  
Estate Agents



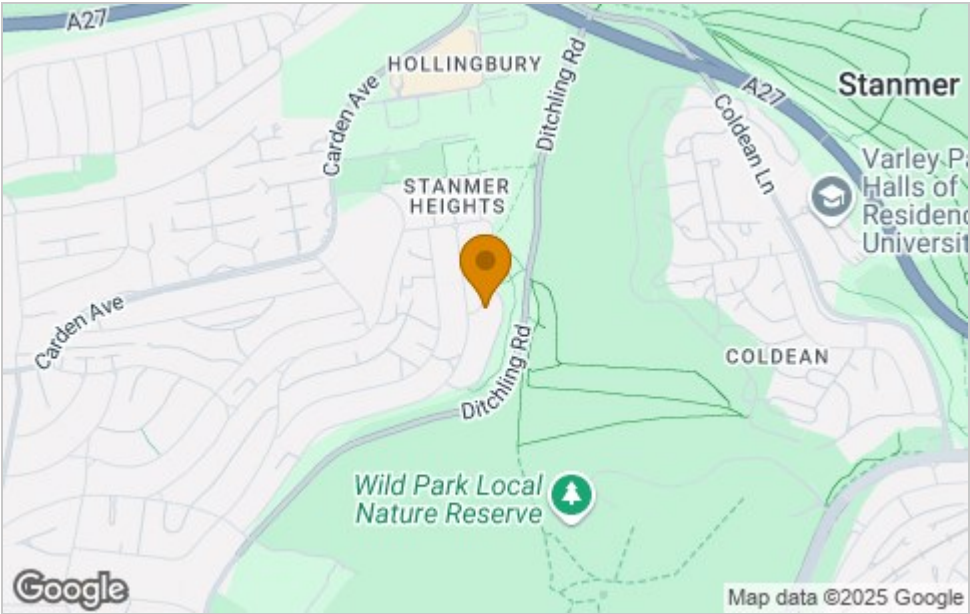
Avard  
Estate Agents



Floor Plan



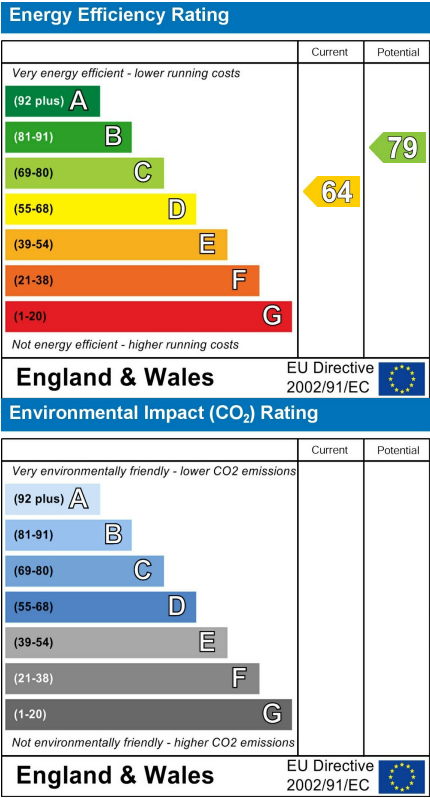
Area Map



Viewing

Please contact our Avard Estate Agents Office on 01273696000 if you wish to arrange a viewing appointment for this property or require further information.

Energy Efficiency Graph



These particulars, whilst believed to be accurate are set out as a general outline only for guidance and do not constitute any part of an offer or contract. Intending purchasers should not rely on them as statements of representation of fact, but must satisfy themselves by inspection or otherwise as to their accuracy. No person in this firms employment has the authority to make or give any representation or warranty in respect of the property.