

Avard

Estate Agents



19b Southdown Avenue

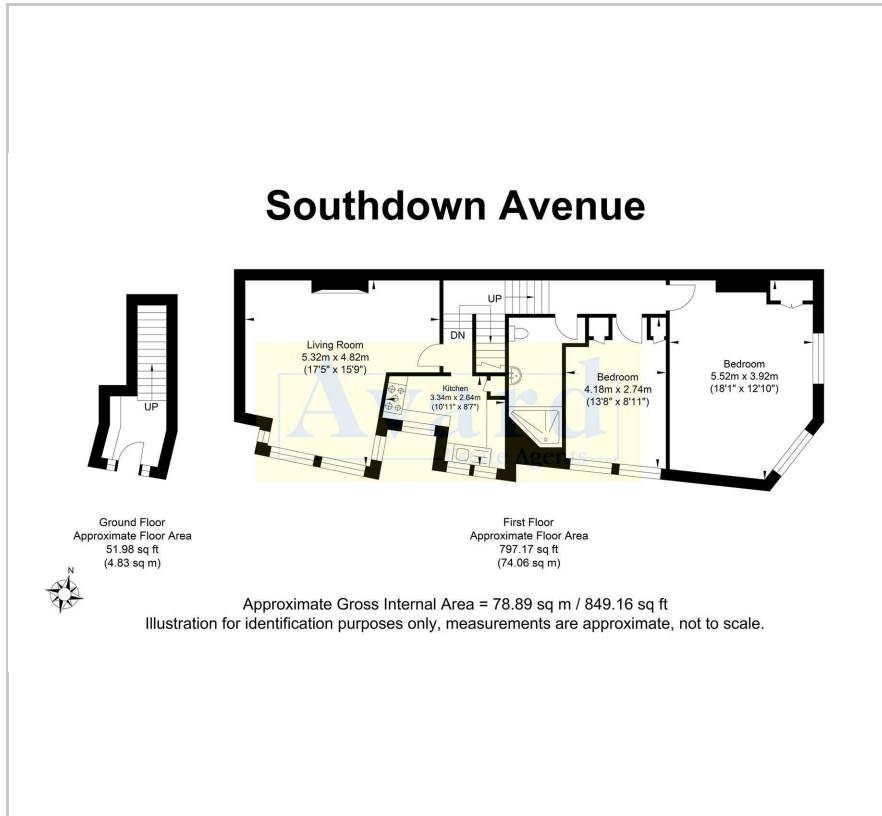
Brighton, BN1 6EH

£1,700 Per month

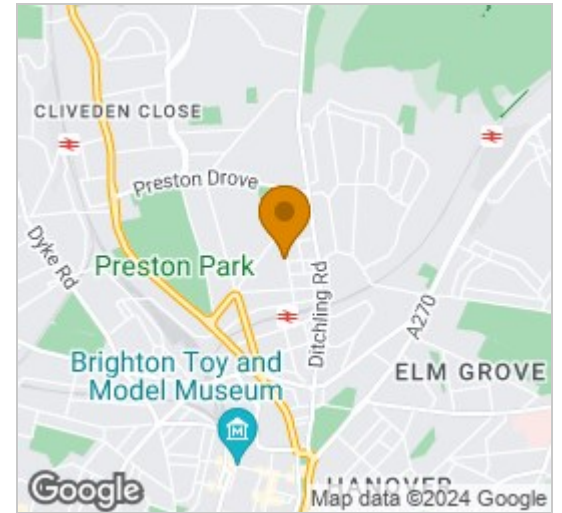


- 2 (bed icon)
- 1 (bath icon)
- 1 (sofa icon)
- D (hamburger menu icon)

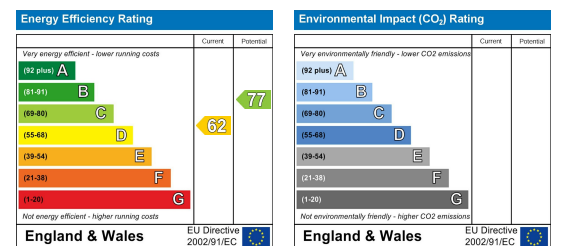
Floor Plan



Area Map



Energy Efficiency Graph

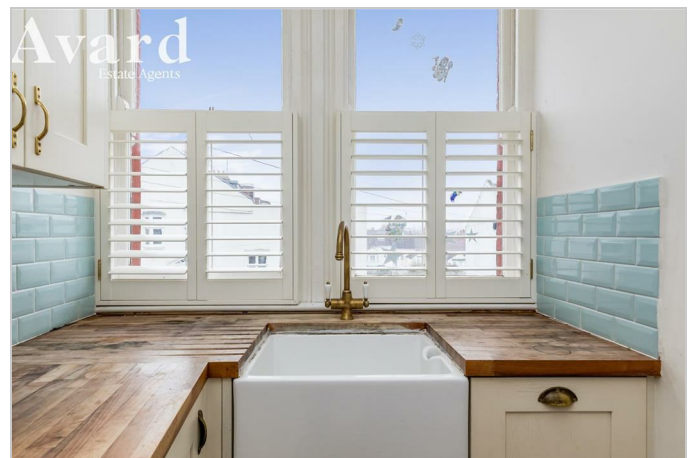


Viewing

Please contact our Avard Estate Agents Office on 01273696000 if you wish to arrange a viewing appointment for this property or require further information.



Avard Estate Agents are pleased to offer for let this beautifully presented 2 bedroom apartment. This apartment is located in the popular area with local shops and cafes and coffee shops situated nearby at the Fiveways & Preston Circus and it's only a stroll away from Down's junior and infant schools which have excellent reputations, a stone's throw away from the bustle of the City, yet far enough removed to take a quiet and more peaceful ambiance. Central Brighton is close enough for a pleasant walk or just pop on the bus for a short ride into the City Centre. The area has many popular gastro pubs including the 'The Roundhill', 'Signalman' and the 'Open House'. Nearby Lewes and London Road have an abundance of local shops and supermarkets. Both Brighton mainline and London Road train station are within easy walking distance with their commuter links to Gatwick Airport and London. Must view to fully appreciate the outstanding finish throughout.



These particulars, whilst believed to be accurate are set out as a general outline only for guidance and do not constitute any part of an offer or contract. Intending purchasers should not rely on them as statements of representation of fact, but must satisfy themselves by inspection or otherwise as to their accuracy. No person in this firm's employment has the authority to make or give any representation or warranty in respect of the property.