



SIMPLY HOMES

Ladywood Road
Hertford SG14 2TG

Price Guide £375,000



Ladywood Road

Hertford SG14 2TG

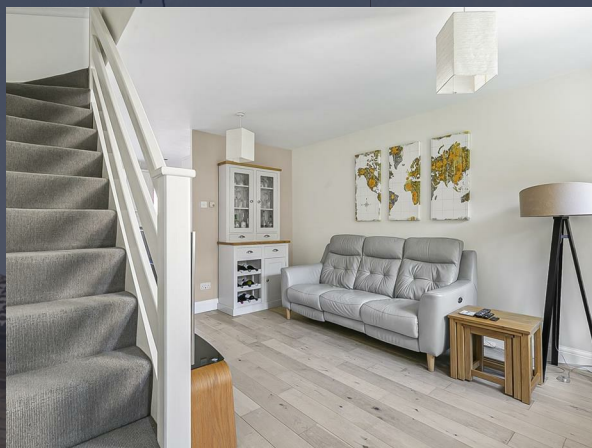
Situated within the quiet and ever-popular Ladywood Road development, is this contemporary two-bedroom, terraced family home. The property benefits from good proportions, tidy finishes and is arranged over two floors. An ideal opportunity for investment or first time buyers.

The ground floor comprises; a welcoming entrance porch, an open-plan living room and a well-appointed kitchen/diner. The kitchen/diner features a range of base/eye level units, various built-in storage, tiled splash backs, breakfast bar, various integrated appliances and French doors to the garden.

The first-floor landing leads to two good sized bedrooms, with the larger bedroom featuring fitted wardrobes. The bedrooms are served by a tiled family bathroom of great proportion.

The rear garden has been tastefully landscaped, being very low maintenance with patio entertainment/seating area, useful storage shed and raised planters. A gate at the rear of the garden leads to the allocated parking.

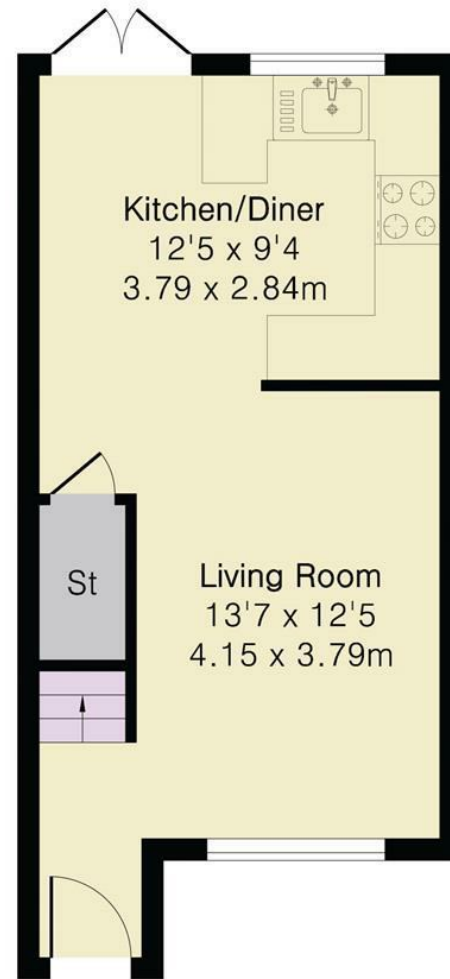
The popular market town of Hertford is within walking distance and offers a wide variety of shops, leisure facilities, and a range of public houses and eateries from around the globe. The commuter is well catered for with easy access to the A10, whilst Hertford North/East stations provide fast and frequent access to London.



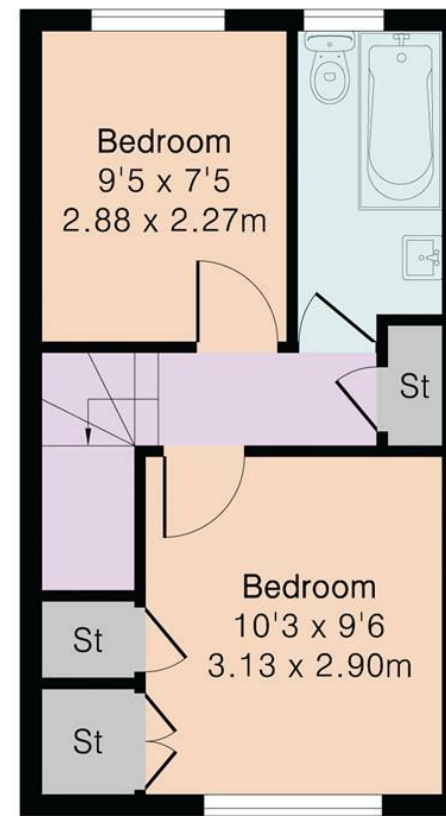
Approximate Gross Internal Area 576 sq ft - 53 sq m

Ground Floor Area 294 sq ft – 27 sq m

First Floor Area 282 sq ft – 26 sq m



Ground Floor



First Floor





SIMPLY HOMES

115 Fore Street | Hertford | SG14 1AS | 01992 558 557 | sales@simply-homes.co.uk | simply-homes.co.uk | Find us on

