



SIMPLY HOMES

**Forest Hall Road**

Stansted CM24 8TY

**Price Guide £695,000**







# Forest Hall Road

Stansted CM24 8TY

One of two stunning three-bedroom, semi-detached, single storey properties which are part of a small development of five, within the curtilage of a Grade-II Listed barn. The bungalows were the former brick built dairy for the farm and have been built to a high-grade specification.

The property comprises of an initial entrance hall with fitted storage and leads through to an open plan kitchen/family/dining room with French doors to the garden. The kitchen features a range of base/eye level units, quartz worktops, breakfast bar and various integrated AEG appliances. There are three double bedrooms, with the main front aspect bedroom benefiting from en-suite bathroom room. The remaining two bedrooms are served by a tastefully finished family bathroom. The property also features underfloor heating throughout.

Externally the property offers a two tier garden, predominantly laid-to-lawn with initial patio entertainment area and unobstructed views of the countryside beyond. The front of the property provides a gravel driveway with space for a number of cars.

Situated in a fantastic semi-rural location, yet convenient for the village of Stansted, Bishop's Stortford, the M11 and Stansted airport. The properties are surrounded by open fields and farmland.

The properties have space for wood burning stoves (if desired) and broadband is available. Both properties have the heating & hot water supplied via an Air Source Heat Pump (ASHP) and an alarm system fitted. These are a pair of stunning conversions and must be seen for both their location and accommodation they offer.











**- Entrance Hallway -**

**Kitchen/Dining/Living Room** 26'7" x 18'5" (8.11m x 5.63m)

**Bedroom One** 12'7" x 15'8" (3.86m x 4.78m)

**En-suite**

**Bedroom Two** 12'3" x 14'10" (3.74m x 4.54m)

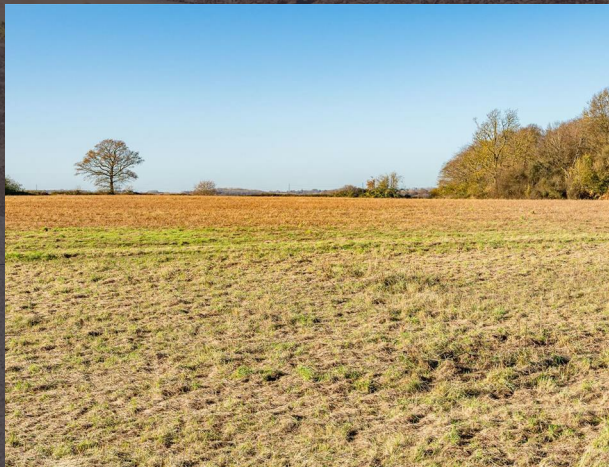
**Bedroom Three** 9'3" x 10'6" (2.83m x 3.21m)

**Family Bathroom**

**- Exterior -**

**Driveway**

**Rear Garden**







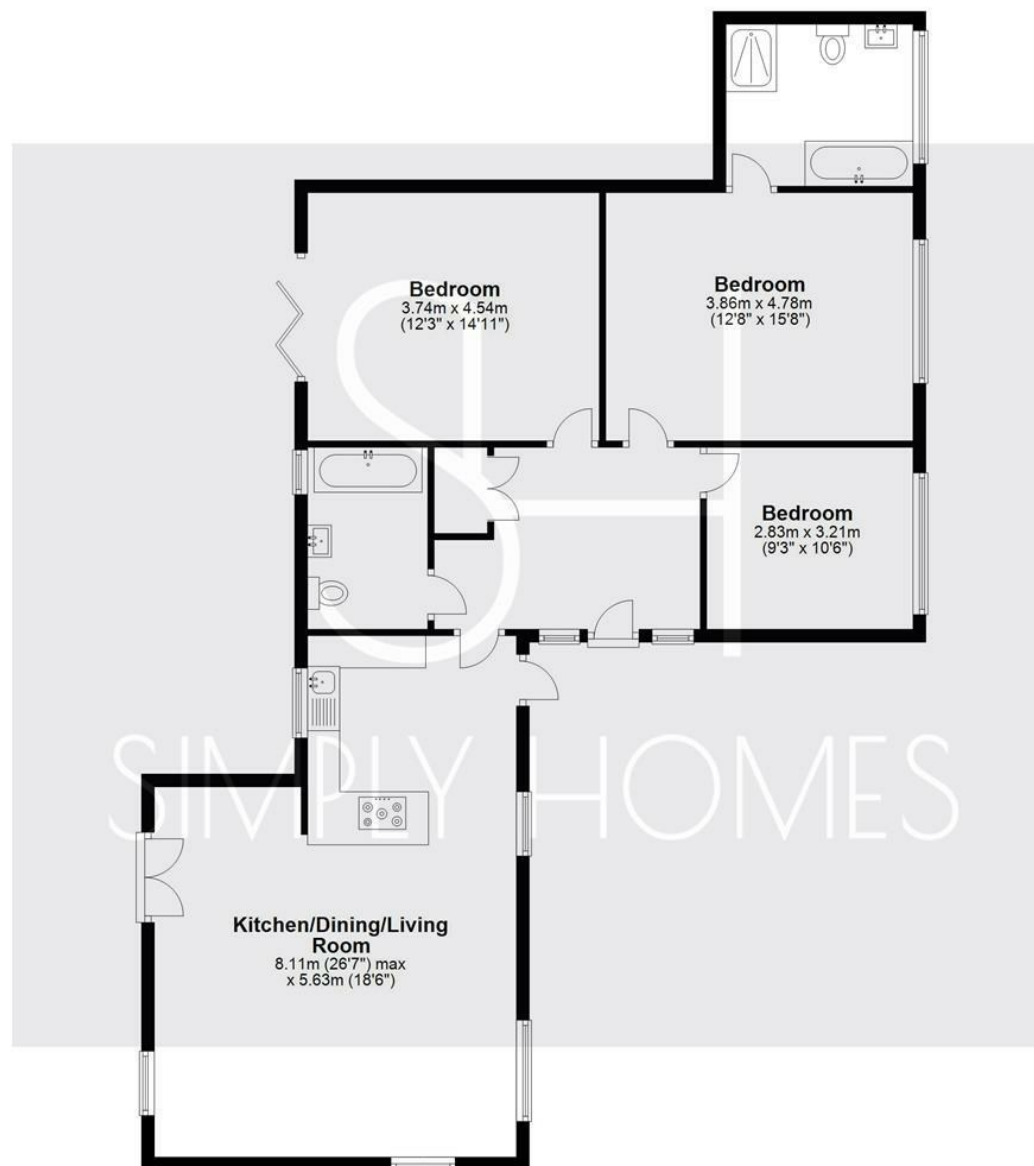






### Ground Floor

Approx. 111.3 sq. metres (1198.1 sq. feet)



Total area: approx. 111.3 sq. metres (1198.1 sq. feet)





# SIMPLY HOMES

115 Fore Street | Hertford | SG14 1AS | 01992 558 557 | [sales@simply-homes.co.uk](mailto:sales@simply-homes.co.uk) | [simply-homes.co.uk](http://simply-homes.co.uk) | Find us on

