



SIMPLY HOMES

Forest Hall Road
Stansted CM24 8TY

Price Guide £650,000





Forest Hall Road

Stansted CM24 8TY

One of two stunning three-bedroom, semi-detached, single storey properties which are part of a small development of five, within the curtilage of a Grade-II Listed barn. The bungalows were the former dairy for the farm and have been built to a high-grade specification.

The property comprises of an initial entrance hall with fitted storage and leads through to an open plan kitchen/family/dining room with two sets of bi-fold doors to the garden. The kitchen features a range of base/eye level units, quartz worktops and various integrated AEG appliances. There are three double bedrooms, with the main rear aspect bedroom benefiting from an en-suite shower room and bi-fold doors to the garden. The remaining two bedrooms are served by a tidily finished family bathroom. The property also features underfloor heating throughout.

Externally the property offers a private rear garden, predominantly laid-to-lawn with initial patio entertainment area and unobstructed views of the countryside beyond. The front of the property provides a gravel driveway with space for a number of cars.

Situated in a fantastic semi-rural location, yet convenient for the village of Stansted, Bishop's Stortford, the M11 and Stansted airport. The properties are surrounded by open fields and farmland.

The properties have space for wood burning stoves (if desired) and broadband is available. Both properties have the heating & hot water supplied via an Air Source Heat Pump (ASHP) and an alarm system fitted. These are a pair of stunning conversions and must be seen for both their location and accommodation they offer.







- Ground Floor -

Entrance Hallway

Kitchen/Dining/Living Room 31'1" x 21'5" (9.49m x 6.55m)

Bedroom One 13'5" x 10'9" (4.11m x 3.28m)

En-suite

Bedroom Two 11'3" x 10'9" (3.43m x 3.28m)

Bedroom Three 13'2" x 10'2" (4.03m x 3.11m)

Family Bathroom

- Exterior -

Driveway

Garden

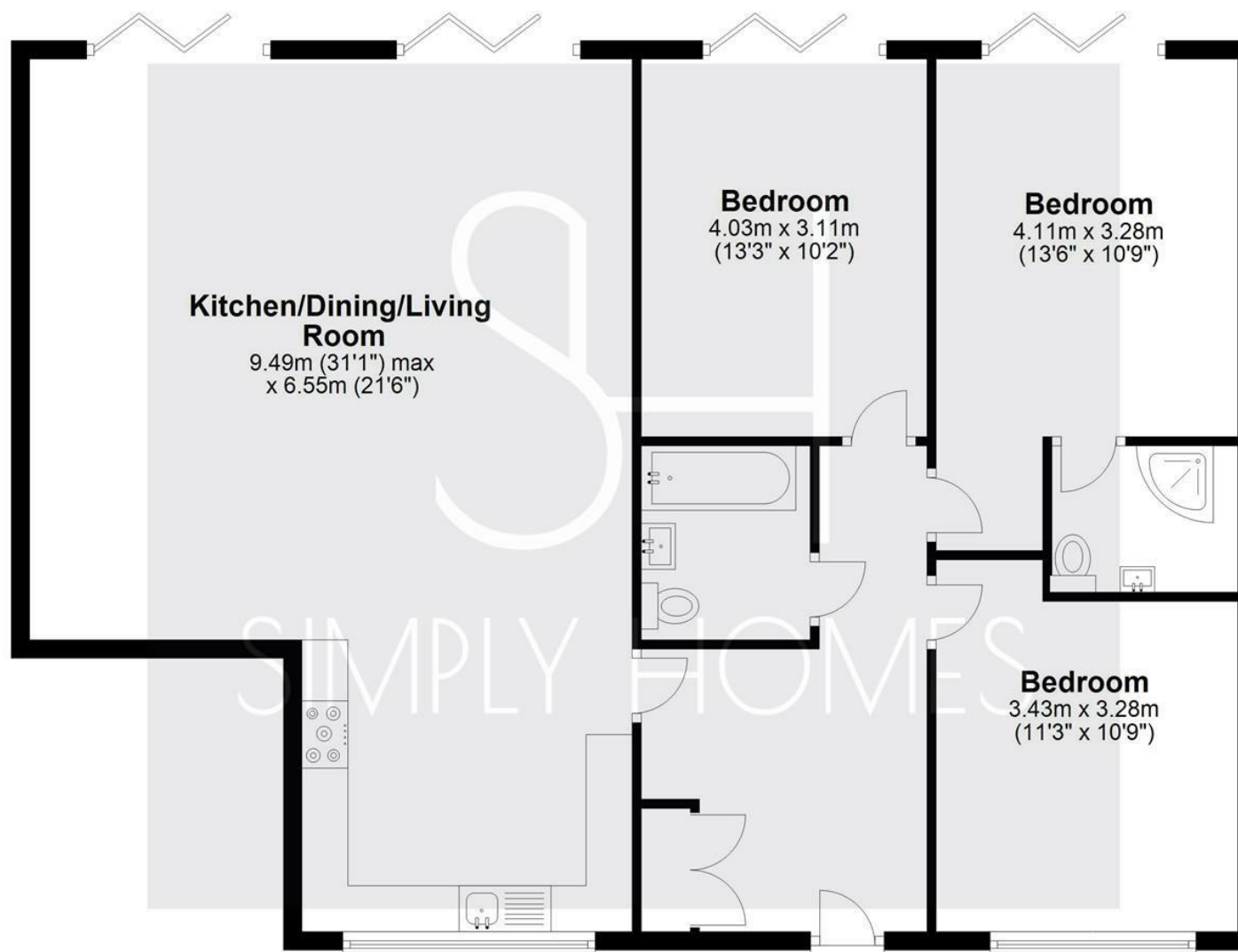






Ground Floor

Approx. 114.4 sq. metres (1231.7 sq. feet)



Total area: approx. 114.4 sq. metres (1231.7 sq. feet)



SIMPLY HOMES

115 Fore Street | Hertford | SG14 1AS | 01992 558 557 | sales@simply-homes.co.uk | simply-homes.co.uk | Find us on

