



SIMPLY HOMES

**Warren Way**

Welwyn AL6 0DN

Price Guide £900,000



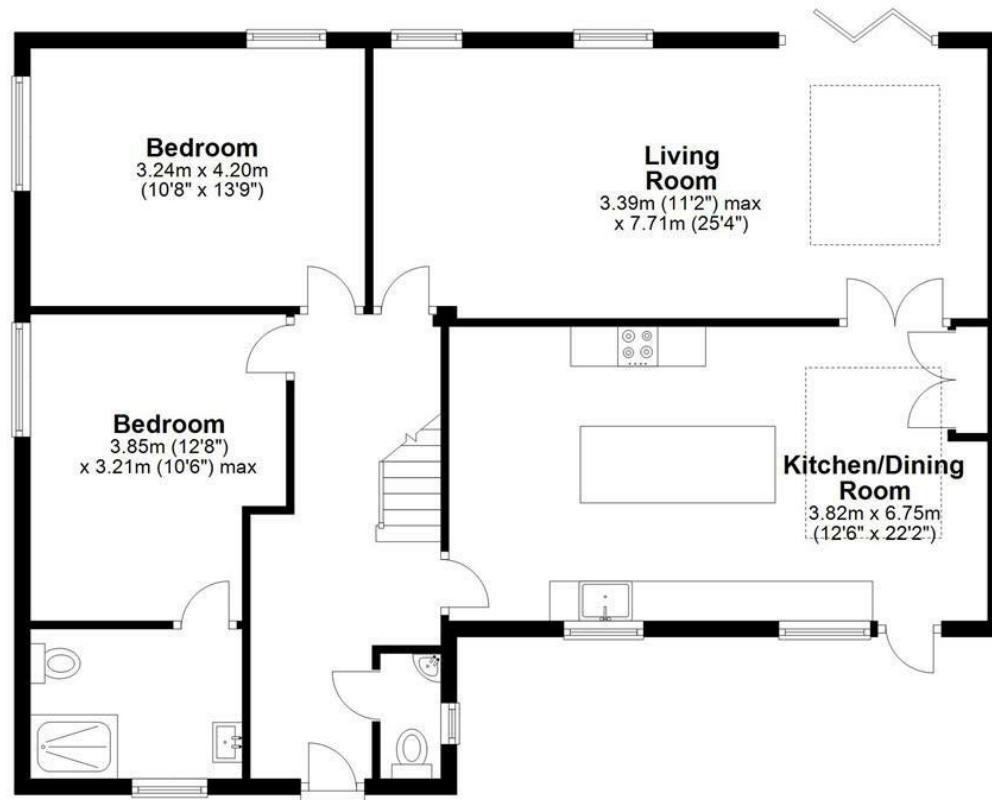
# Warren Way

Welwyn AL6 0DN



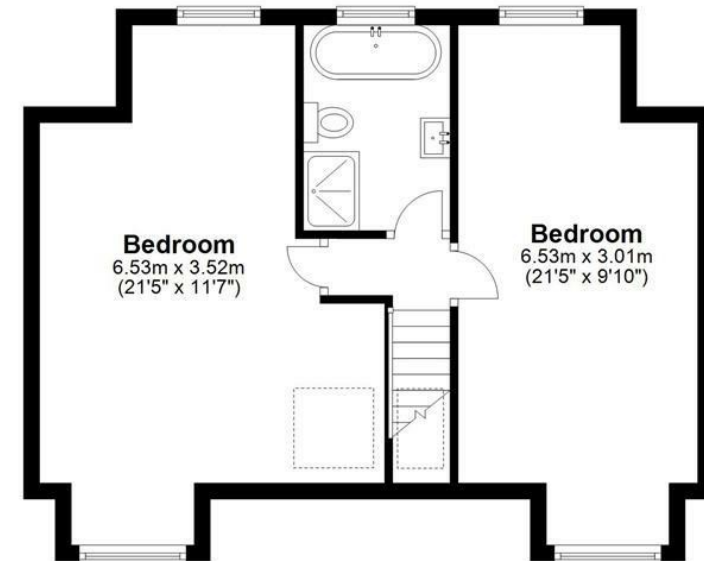
### Ground Floor

Approx. 97.4 sq. metres (1048.2 sq. feet)



### First Floor

Approx. 47.7 sq. metres (513.5 sq. feet)



Total area: approx. 145.1 sq. metres (1561.7 sq. feet)

FOR ILLUSTRATIVE PURPOSES ONLY. NOT TO SCALE

Whilst every attempt has been made to ensure the accuracy of the floor plan shown, all measurements, positioning, fixtures, features, fittings and any other data shown are an approximate interpretation for illustrative purposes only and are not to scale. No responsibility is taken for any error, omission, miss-statement or use of data shown.



SIMPLY HOMES

115 Fore Street | Hertford | SG14 1AS | 01992 558 557 | [sales@simply-homes.co.uk](mailto:sales@simply-homes.co.uk) | [simply-homes.co.uk](http://simply-homes.co.uk) | Find us on

