



SIMPLY HOMES

Clyde Terrace
Hertford SG13 7JP

Price Guide £415,000



Clyde Terrace

Hertford SG13 7JP

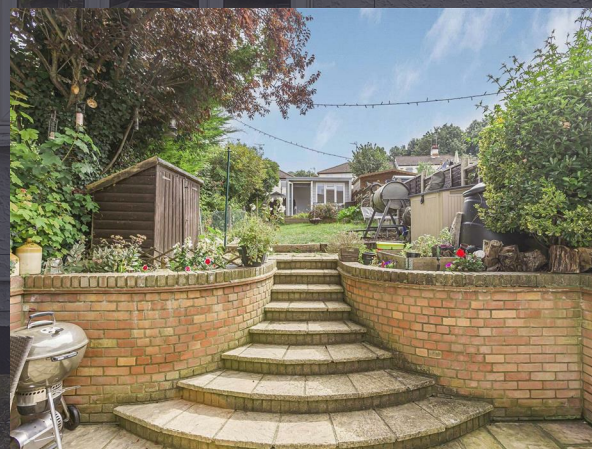
Positioned on the south side of Hertford is this spacious three-bedroom mid terrace family home located in the favourite SG13 catchment and in a prime area for local schooling. The property offers flexible family living and is arranged over two floors.

The ground floor of the property offers a spacious front-aspect living room with feature wood burning stove, built-in shelving and cupboards. The rear aspect kitchen diner features a range of base/eye level units, a range of freestanding appliances and French doors to the garden.

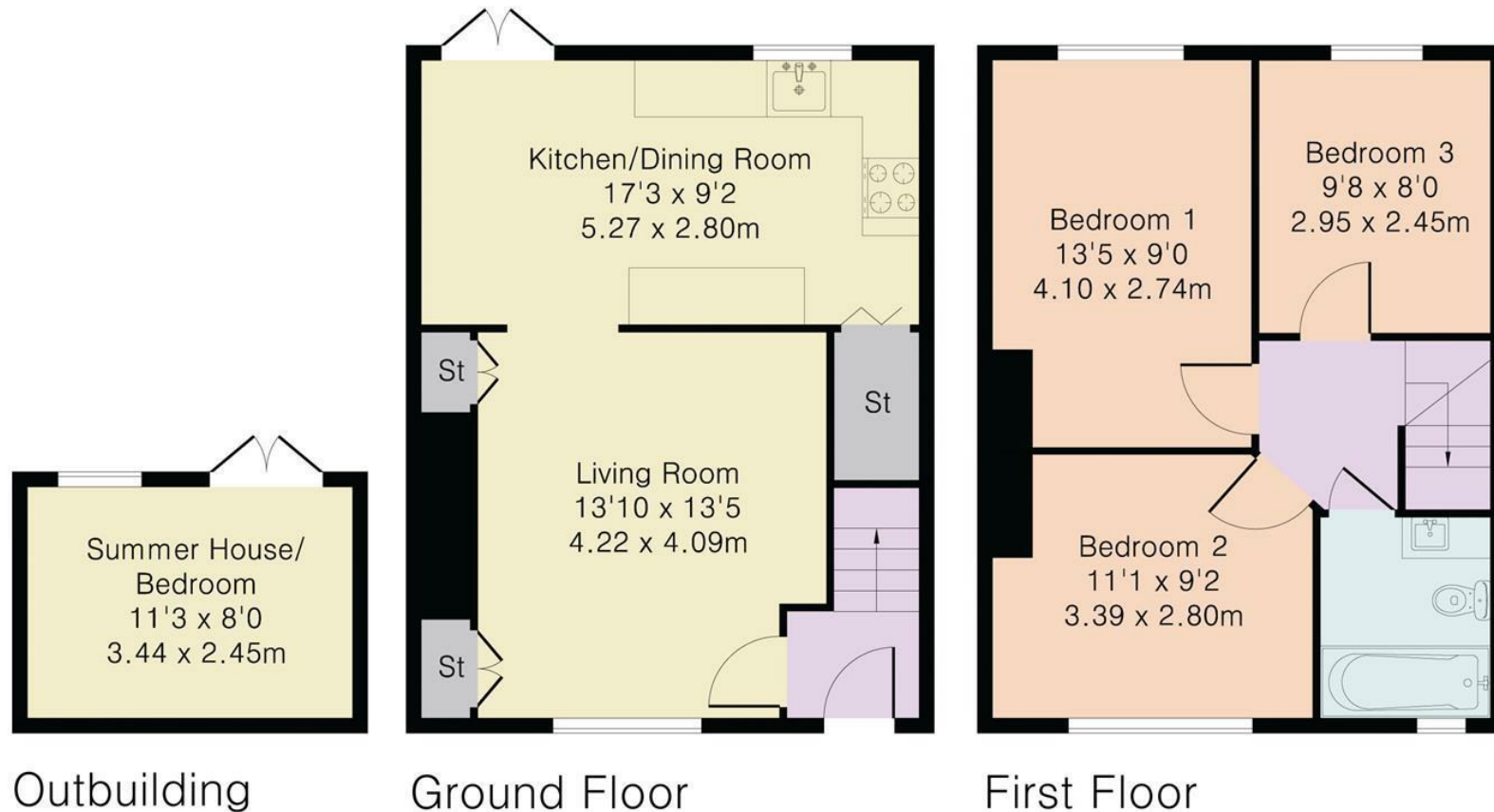
To the first floor is a good-sized landing, leading to three bedrooms and a tiled family bathroom suite.

Externally the property offers a private and multi-level garden to rear in excess of 70ft and the additional benefit of a purpose-built detached summerhouse. The summerhouse provides a multitude of uses and could serve as an additional bedroom, office or studio space. Returning to the front of the property is the homes driveway, with ample parking for at least 2 cars.

This property is located in a popular residential area within the SG13 School Catchment and within a stone's throw of the local Wheatcroft Primary School.



Approximate Gross Internal Area 881 sq ft – 82 sq m
Ground Floor Area 395 sq ft – 37 sq m
First Floor Area 395 sq ft – 37 sq m
Outbuilding Area 91 sq ft – 8 sq m







SIMPLY HOMES

115 Fore Street | Hertford | SG14 1AS | 01992 558 557 | sales@simply-homes.co.uk | simply-homes.co.uk | Find us on

