



SIMPLY HOMES

**Hammondstreet Road**

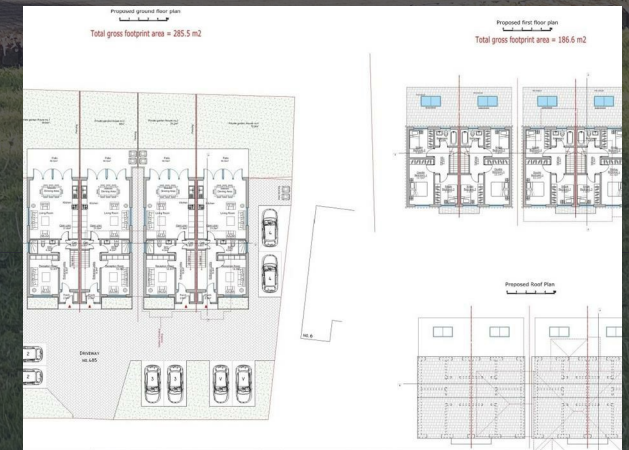
Cheshunt EN7 6PN

Price Guide £1,000,000

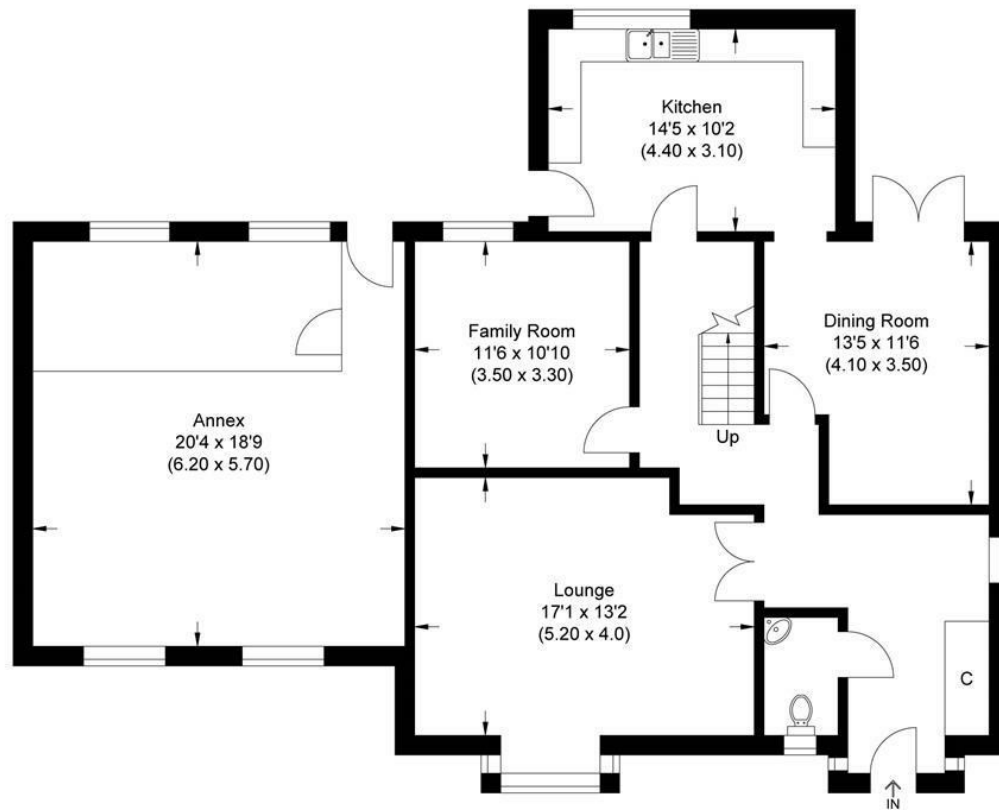


# Hammondstreet Road

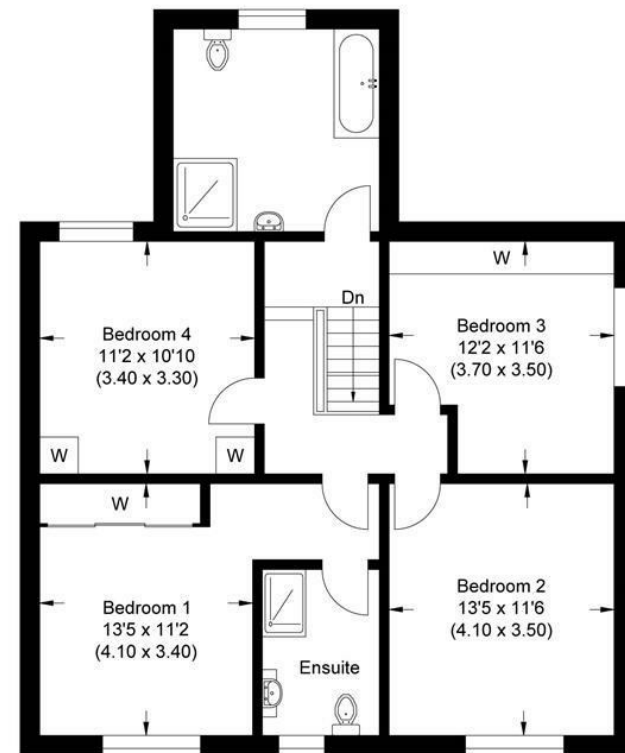
Cheshunt EN7 6PN



Approximate Gross Internal Area  
197.0 sq m / 2120.49 sq ft



Ground Floor



First Floor

Illustration for identification purposes only, measurements are approximate, not to scale.



SIMPLY HOMES

115 Fore Street | Hertford | SG14 1AS | 01992 558 557 | [sales@simply-homes.co.uk](mailto:sales@simply-homes.co.uk) | [simply-homes.co.uk](http://simply-homes.co.uk) | Find us on

