



SIMPLY HOMES

Ford Hill

Little Hadham SG11 2AZ

Price Guide £900,000





Ford Hill

Little Hadham SG11 2AZ

CHAIN FREE - WE HOLD THE KEYS - Peppers - A beautiful chalet style detached home, accessed by a long sweeping drive, on a beautifully secluded plot. The property also offers substantial living accommodation across two levels, with huge potential to modernise and extend (STPP).

Enter via a large entrance porch, with plenty of space for boots and coats. The hallway leads to the impressive kitchen/garden room, which really feels like the hub of the home and showcases the plot that the property is positioned on with unobstructed views of the garden. The kitchen features a range of base and eye level units, various integrated appliances and is served by the utility room. The ground floor also consists of two large bedrooms, each with built-in wardrobes and one with a four-piece en-suite. The remainder of the ground floor comprises; 24ft living room, dining room, bathroom and cloakroom/WC.

To the first-floor landing, consisting of two further double bedrooms. Each of the rooms feature built-in wardrobes and the larger bedroom also benefitting from a fully tiled en-suite. The first floor also features an incredible amount of storage space throughout.

To the exterior, where the property really showcases the stunning wrap around plot. The rear of the property features the well tended, private garden which is mostly laid to lawn with mature shrubs, trees and a patio entertainment area. Returning to the front, the property offers a large integral garage, accessed via an external door and ample off-street parking for multiple cars.







- Peppers -

- Ground Floor -

Entrance Lobby

Hallway

Cloakroom/WC

Living Room

24'0" x 12'11" (7.32m x 3.94m)

Kitchen

12'9" x 12'11" (3.90m x 3.94m)

Utility Room

Garden Room

13'3" x 9'3" (4.06m x 2.83m)

Dining Room

10'9" x 14'11" (3.30m x 4.56m)

Bedroom One

21'1" x 13'10" (6.43m x 4.24m)

En-suite

Bedroom Two

11'6" x 11'6" (3.52m x 3.51m)

Family Bathroom

Garage

24'0" x 9'1" (7.33m x 2.77m)

- First Floor -

Landing

Bedroom Three

11'1" x 25'3" (3.40m x 7.70m)

En-suite

Bedroom Four

9'1" x 15'1" (2.78m x 4.61m)

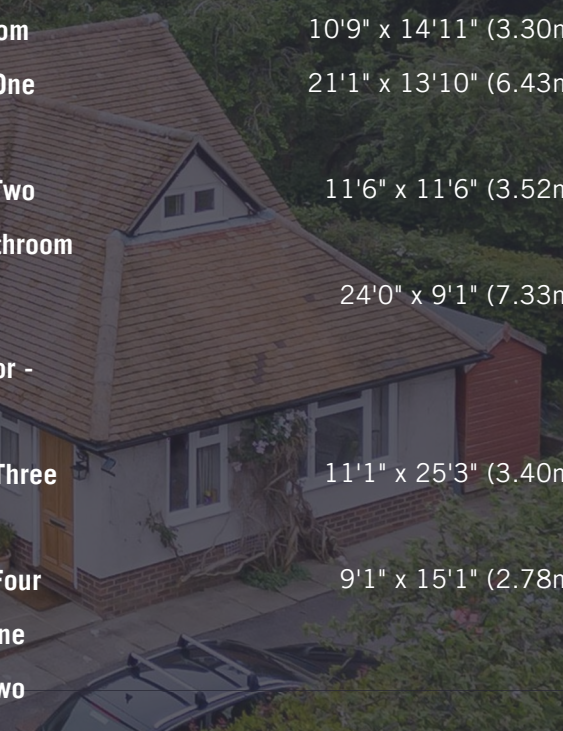
Storage One

Storage Two

- Exterior -

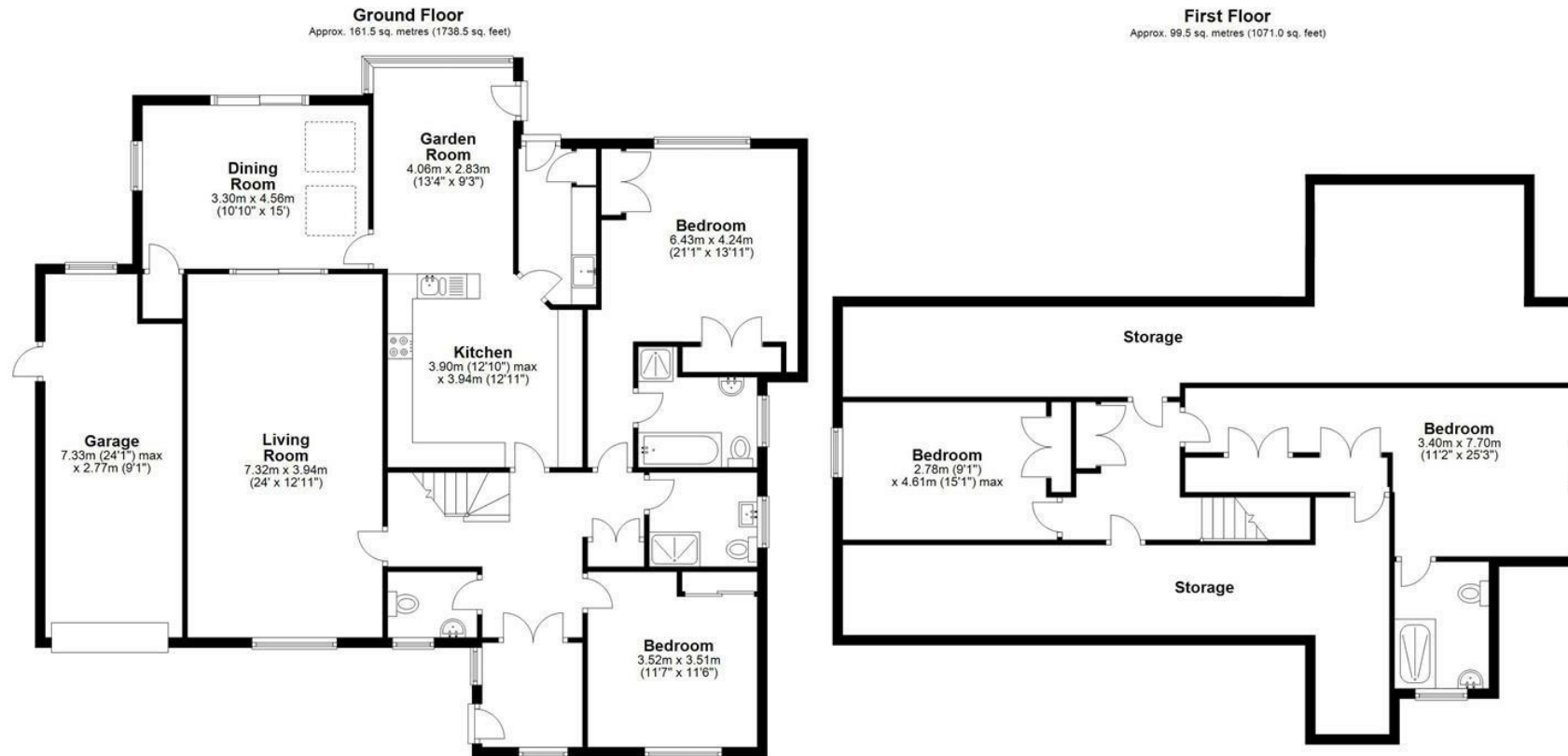
Driveway

Garden









Total area: approx. 261.0 sq. metres (2809.4 sq. feet)

FOR ILLUSTRATIVE PURPOSES ONLY. NOT TO SCALE

Whilst every attempt has been made to ensure the accuracy of the floor plan shown, all measurements, positioning, fixtures, features, fittings and any other data shown are an approximate interpretation for illustrative purposes only and are not to scale. No responsibility is taken for any error, omission, miss-statement or use of data shown.

Property marketing provided by www.matthewkyle.co.uk







SIMPLY HOMES

115 Fore Street | Hertford | SG14 1AS | 01992 558 557 | sales@simply-homes.co.uk | simply-homes.co.uk | Find us on

