

AVAILABLE



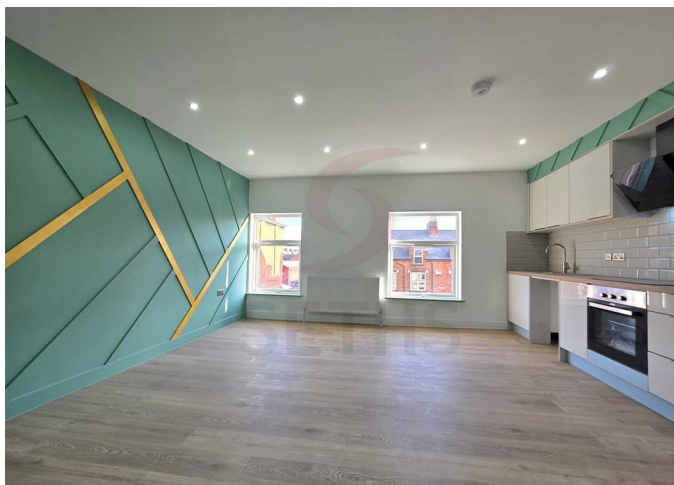
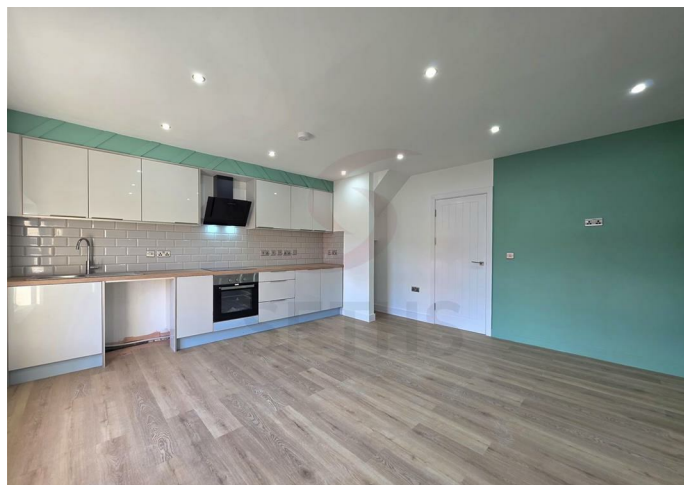
Flat

MELTON ROAD LEICESTER LE4 5EA

£1,350 Per
Month

FEATURES

- LUXIOUS APARTMENT
- Finished to a High Standard
- Modern Kitchen
- Heart of Belgrave Location
- 3 Bedrooms
- Gas Central Heating and Double Glazing
- Modern Shower Room
- Close to Local Shops



 **SETHS**

3 Bedroom Flat located in Leicester

*** LUXURIOUS 3 BEDROOM FLAT ***
No Deposit Option Available

Seths are proud to market this luxurious 3 Bedroom Second Floor Flat on Melton Road in the heart of Belgrave, Leicester.

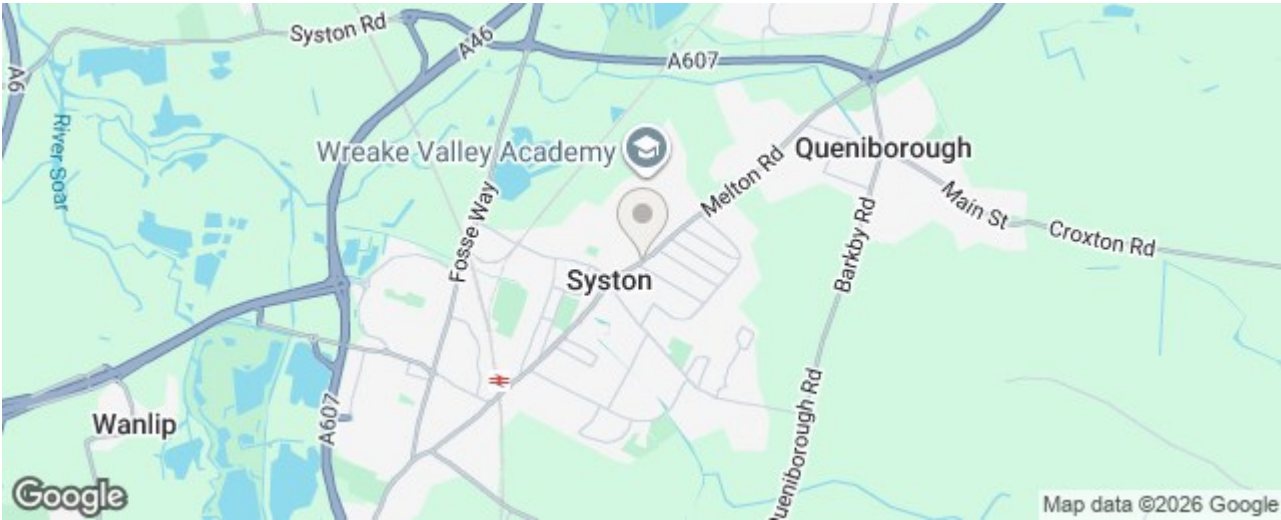
This newly refurbished two-bedroom flat on Melton Road offers a splendid living experience finished to a high standard over 2 floors. The property boasts a well-designed layout, featuring a welcoming open plan Lounge and Kitchen that provides a perfect space for relaxation or entertaining guests.

All three bedrooms are thoughtfully appointed, showcasing elegant panelling and stylish bedside lights, creating a warm and inviting atmosphere. The flat also includes an amazing fitted shower room, which provides modern aesthetics. The kitchen is equally impressive, equipped with contemporary fixtures that cater to all your culinary needs.

On the second floor are two bedrooms and a shower room finished to a high standard.

Situated in a prime location, this flat is conveniently close to local shops and excellent transport links, making it an ideal choice for those who value accessibility and community amenities. This property is not to be missed, offering a perfect blend of comfort and style.

Rent: £1350PCM
Security Deposit: £1555



Call us on
0116 266 9977

let@seths.co.uk
www.seths.co.uk

Council Tax Band
A

Energy Efficiency Rating		
	Current	Potential
Very energy efficient - lower running costs		
(92 plus) A		
(81-91) B		
(69-80) C		
(55-68) D		
(39-54) E		
(21-38) F		
(1-20) G		
Not energy efficient - higher running costs		
England & Wales	EU Directive 2002/91/EC	

Agents Note: Whilst every care has been taken to prepare these particulars, they are for guidance purposes only. All measurements are approximate and are for general guidance purposes only and whilst every care has been taken to ensure their accuracy, they should not be relied upon and potential buyers are advised to recheck the measurements.

