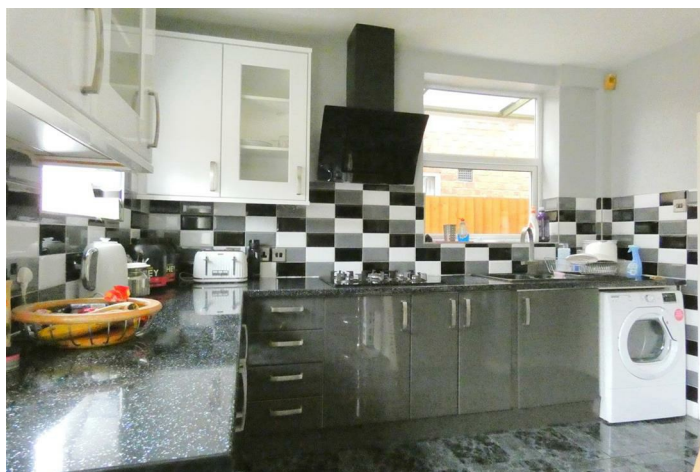


FREEHOLD



House - Semi-Detached (EPC Rating: D)

**52 AVERIL ROAD, HUMBERSTONE, LEICESTER,
LE5 2DA**

£264,500



3 Bedroom House - Semi-Detached located in Leicester

NO CHAIN + OFFICE / STUDY

A well presented 3 Bedroom Semi Detached House in the popular area of Humberstone located just off Colchester Road and close to local amenities. In brief, the property comprises of an entrance hallway, living room, kitchen, 3 Bedrooms, office / study, shower room with a separate WC. The property also benefits from a driveway and a spacious garden.

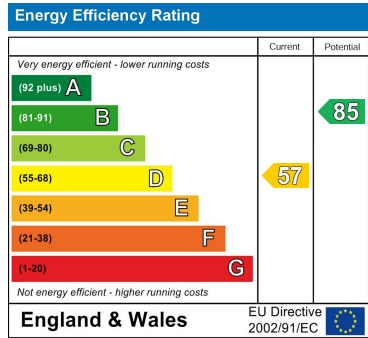
Contact Seths to arrange a viewing.



Whilst every attempt has been made to ensure the accuracy of the floorplan contained here, measurements of doors, windows, rooms and any other items are approximate and no responsibility is taken for any error, omission or mis-statement. This plan is for illustrative purposes only and should be used as such by any prospective purchaser. The services, systems and appliances shown have not been tested and no guarantee as to their operability or efficiency can be given.
Made with Metropix ©2024

Council Tax Band
B
Energy Performance Graph

Call us on
0116 266 9977
sales@seths.co.uk
www.seths.co.uk



Agents Note: Whilst every care has been taken to prepare these particulars, they are for guidance purposes only. All measurements are approximate and are for general guidance purposes only and whilst every care has been taken to ensure their accuracy, they should not be relied upon and potential buyers are advised to recheck the measurements.