

AVAILABLE



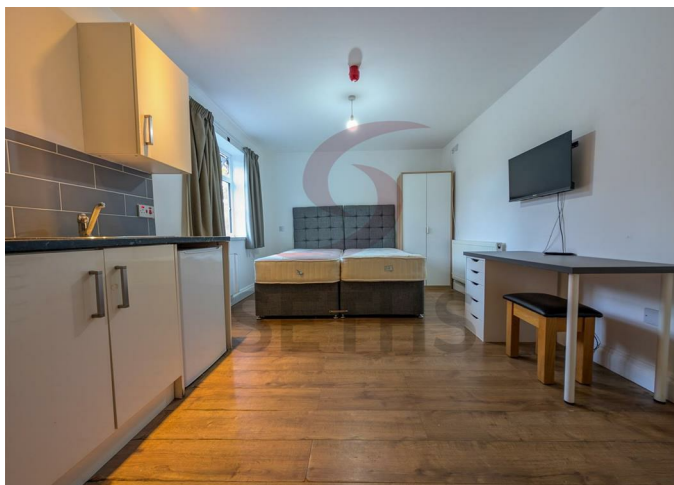
Studio

# SANDPITS LANE COVENTRY CV6 2FR

£795 Per Month

## FEATURES

- Serviced Accommodation
- Studio Apartment
- Furnished
- All Bills Included
- Laundry Room
- Gardens
- Free Parking



 **SETHS**

# 1 Bedroom Studio located in Coventry

**\*\*No Deposit Option Available\*\***

Seths present this delightful studio flat offers a perfect blend of comfort and convenience. Ideal for individuals or couples seeking a hassle free living experience, this property comes furnished, allowing you to move in with ease and style.

The studio layout maximises space, providing a cosy yet functional environment. With a well appointed Shower room, you will find all the necessary amenities to ensure your daily routines are both comfortable and efficient. The studio is part of a serviced accommodation, which means that you can enjoy the benefits of included bills & Cleaning making budgeting straightforward and stress free.

One of the standout features of this property is the availability of free parking, a rare find in urban settings, which adds to the overall appeal. Whether you are commuting to work or exploring the vibrant city of Coventry, you will appreciate the convenience this flat offers.

With its prime location, you will have easy access to local shops, restaurants, and public transport links, making it an excellent choice for those who wish to enjoy all that Coventry has to offer. This studio flat on Sandpits Lane is not just a place to live; it is a welcoming home that promises comfort and ease in a bustling city. Don't miss the opportunity to make this charming studio your own.

£795pcm is based on one adult moving in, couples welcome £850pcm

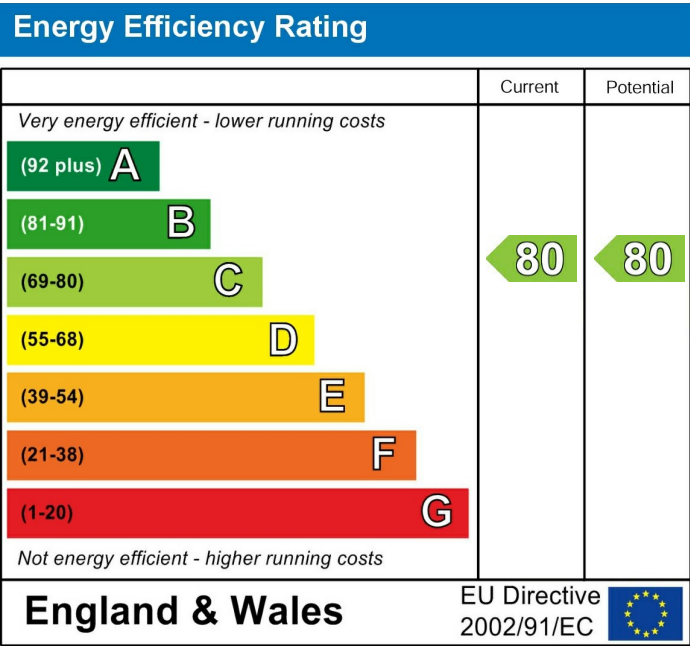
**\*\*Photos shown are based on a similar studio within the building\*\***



Call us on  
**0116 266 9977**

**let@seths.co.uk**  
**www.seths.co.uk**

## Council Tax Band



Agents Note: Whilst every care has been taken to prepare these particulars, they are for guidance purposes only. All measurements are approximate and are for general guidance purposes only and whilst every care has been taken to ensure their accuracy, they should not be relied upon and potential buyers are advised to recheck the measurements.

