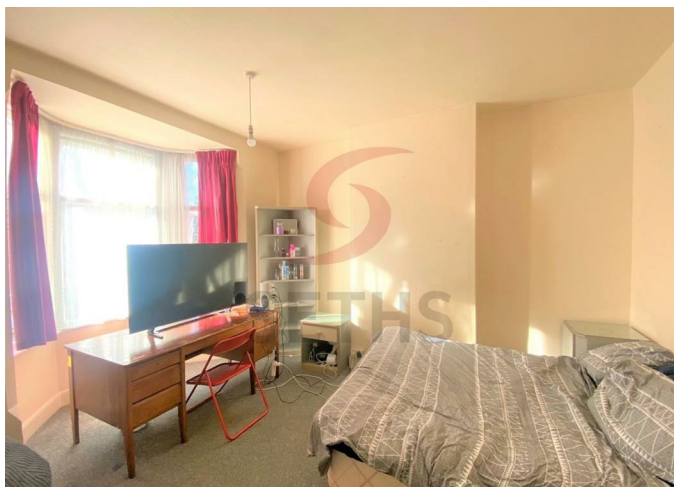


AVAILABLE



House - Terraced

NORMAN STREET LEICESTER LE3 0BA

£1,300 Per

Month

FEATURES

- 4 Double Bedrooms
- Close to DMU
- Garden
- Fully Furnished
- Spacious Rooms
- Permit Parking
- Gas Central Heating



 **SETHS**

4 Bedroom House - Terraced located in Leicester

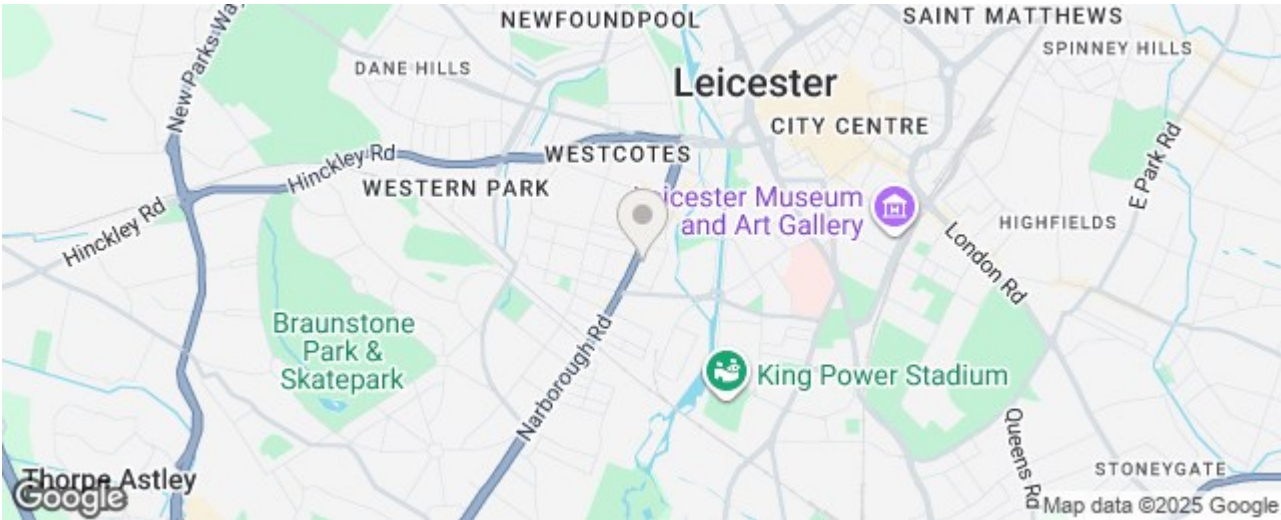
****No Deposit Option Available****

4 BEDROOM RESIDENTIAL PROPERTY

Seths are proud to market this 4 Double Bedroom Mid Terraced House on Norman Street with in walking distance to DeMontfort University! This spacious property is conveniently located in Leicester's West End with access to all bars, shops and local amenities

This property comprises of a kitchen, with fitted appliances, bathroom, spacious lounge and 4 double bedrooms all which come fully furnished.

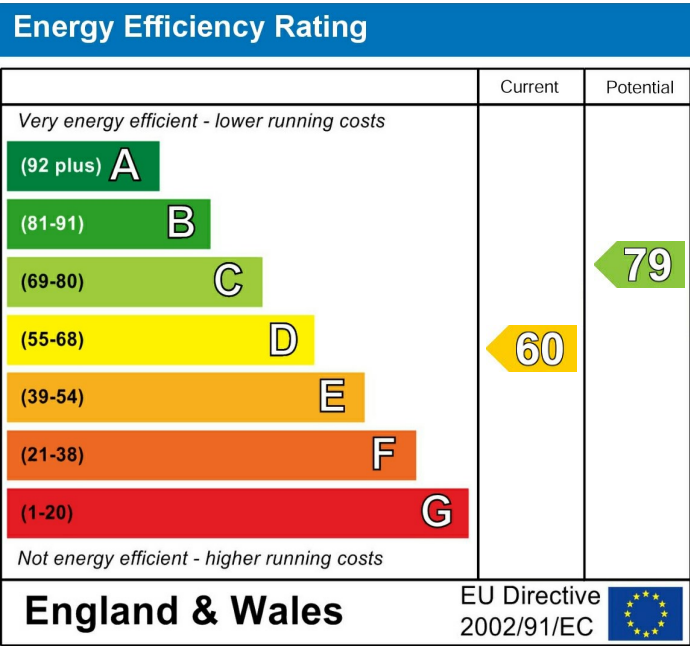
Rent: £1300PCM
Security Deposit: £1500
Tenancy Length: 6 Months
Council Tax Band: A
Pets may be considered at the landlord's discretion and will be subject to a higher rent.



Call us on
0116 266 9977

let@seths.co.uk
www.seths.co.uk

Council Tax Band
A



Agents Note: Whilst every care has been taken to prepare these particulars, they are for guidance purposes only. All measurements are approximate and are for general guidance purposes only and whilst every care has been taken to ensure their accuracy, they should not be relied upon and potential buyers are advised to recheck the measurements.

