

AVAILABLE



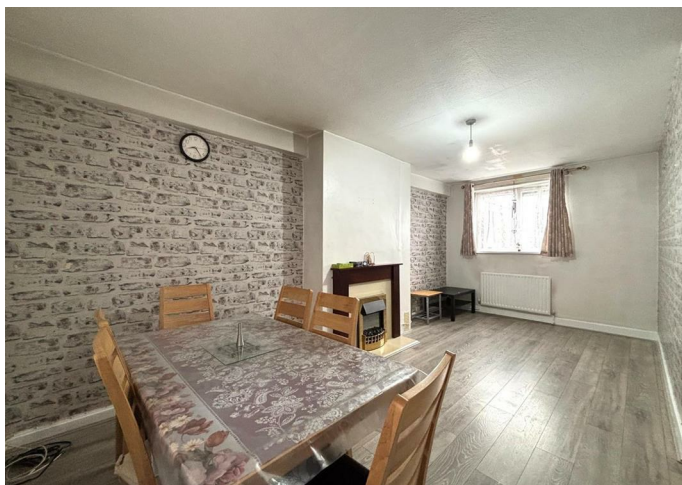
House - Semi-Detached

BALE ROAD LEICESTER LE4 9BD

£1,125 PCM

FEATURES

- Three Bedroom House
- Two Bathrooms
- Fitted Kitchen
- Driveway
- Semi-Detached
- Gas Central Heating
- Lounge
- Garden



 **SETHS**

3 Bedroom House - Semi-Detached located in Leicester

****No Deposit Option Available****

Seths are proud to market this 3 Bedroom Semi-Detached House on Bale Road in the Northfields area.

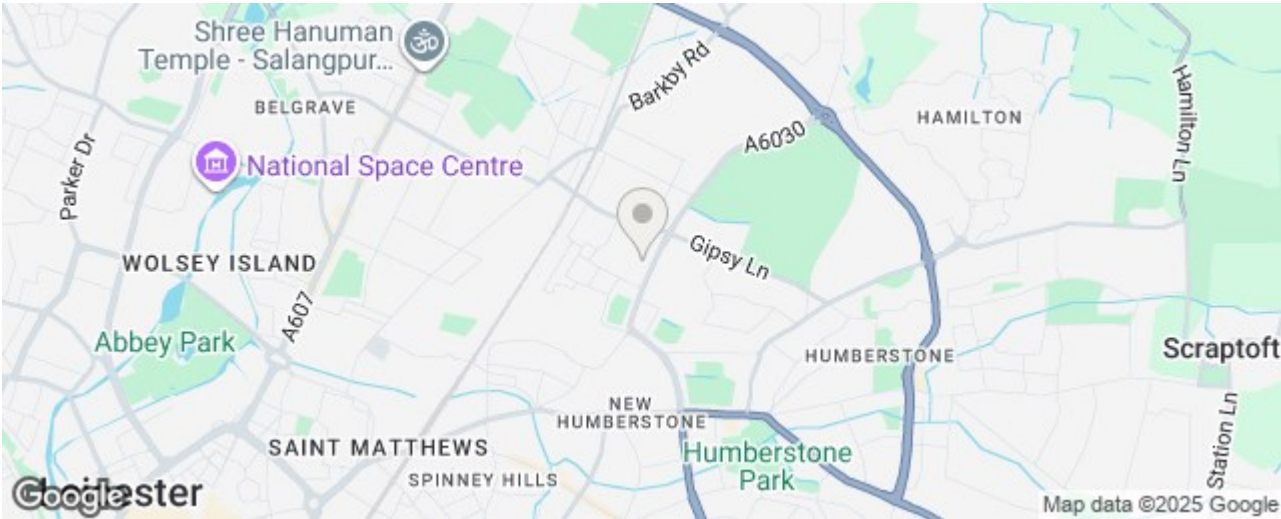
The property opens into a Hallway, which in turn provides access to a Downstairs Storage Room, Lounge and Kitchen. The Kitchen consists of Wall and Base Units with Worktops Over, a Gas Cooker and Sink.

Also on the Ground Floor in an outside Brickbuilding with a Shower Cubicle and W.C. inside.

On the First Floor, there are 3 Bedrooms and a Family Bathroom inclusive of a Bath with Shower Over, Wash Basin and W.C.

The Property does benefit from a Driveway and an Easy Maintenance Garden. The property also benefits from Gas Central Heating and Double Glazing.

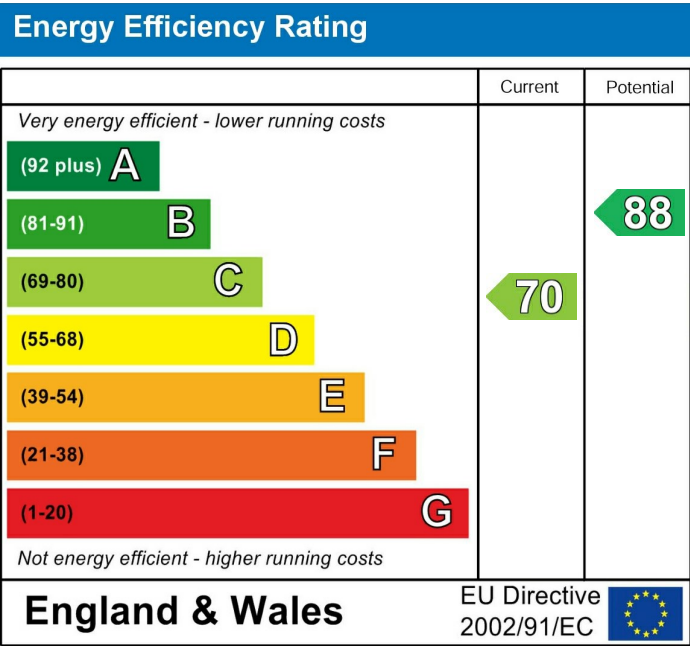
Rent: £1125PCM
Security Deposit: £1295
Tenancy Length: 6 Months
Council Tax Band: A
Pets may be considered at the landlord's discretion and will be subject to a higher rent.



Call us on
0116 266 9977

let@seths.co.uk
www.seths.co.uk

Council Tax Band
A



Agents Note: Whilst every care has been taken to prepare these particulars, they are for guidance purposes only. All measurements are approximate and are for general guidance purposes only and whilst every care has been taken to ensure their accuracy, they should not be relied upon and potential buyers are advised to recheck the measurements.

