

FREEHOLD



Bungalow - Detached (EPC Rating: D)

**18 KITCHENER ROAD, NORTH EVINGTON,  
LEICESTER, LE5 4AS**

**£399,995**

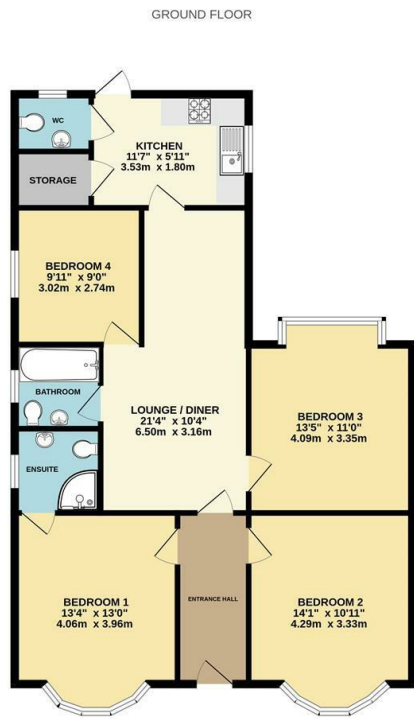


# 4 Bedroom Bungalow - Detached located in Leicester

\*\*\*NO CHAIN - FULLY RENOVATED\*\*\*

A beautiful 4 Bedroom Detached Bungalow located in the sought after LE5 area of North Evington. Having been recently renovated throughout by the current vendors, the property has been finished to a modern standard and is ready to move into. In brief the property comprises of an entrance hall, lounge / diner, kitchen, 4 bedrooms inc an ensuite, family bathroom and separate WC. The property benefits from off road parking for 2 cars and a low maintenance rear garden.

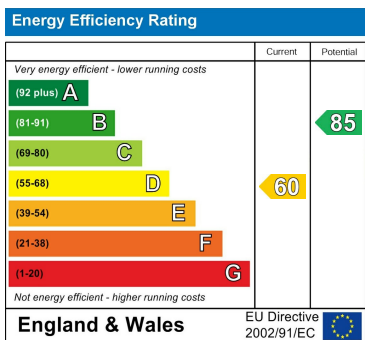
Viewings by appt only.



Council Tax Band

B

Energy Performance Graph



Call us on

0116 266 9977

[sales@seths.co.uk](mailto:sales@seths.co.uk)

[www.seths.co.uk](http://www.seths.co.uk)

Agents Note: Whilst every care has been taken to prepare these particulars, they are for guidance purposes only. All measurements are approximate and are for general guidance purposes only and whilst every care has been taken to ensure their accuracy, they should not be relied upon and potential buyers are advised to recheck the measurements.