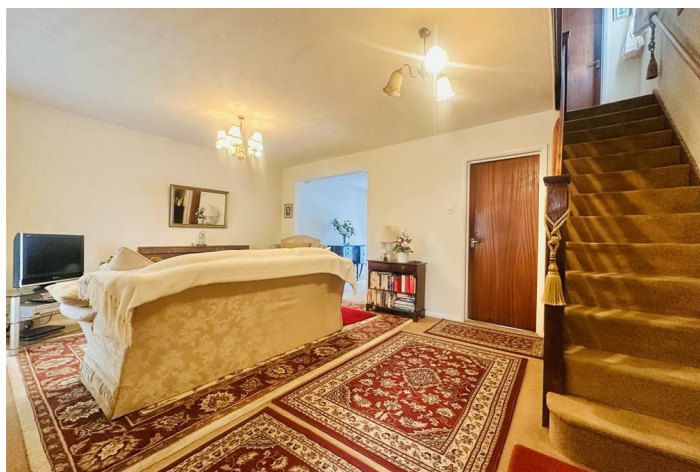


FREEHOLD



House - Detached (EPC Rating: D)

**WARREN DRIVE, THURMASTON, LEICESTER LE4  
9WU**

Asking Price

**£260,000**



# 3 Bedroom House - Detached located in Leicester

\*\*\* DETACHED HOME - THREE BEDROOMS - DRIVEWAY -GARAGE \*\*\*

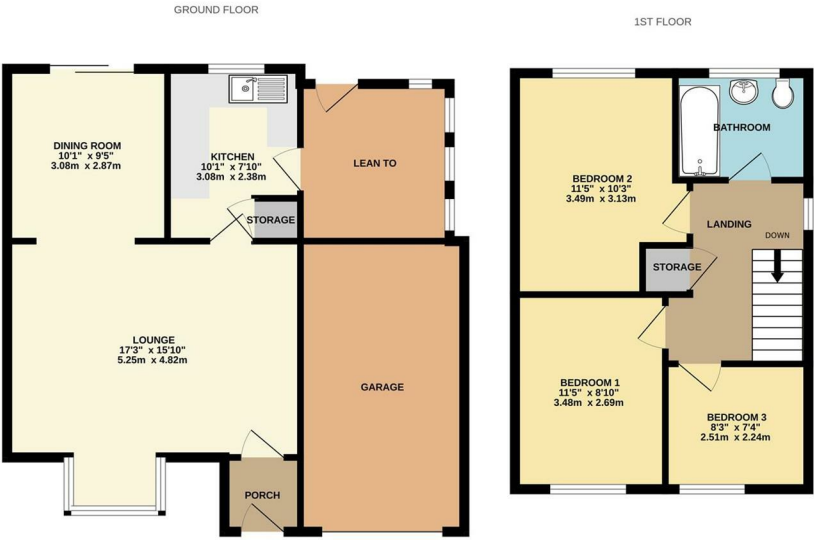
Seths are pleased to present this three-bedroom detached home located on Warren Drive in Thurmaston.

The property offers a driveway with space for multiple vehicles and benefits from a quiet residential location.

Internally, the home features a spacious lounge with a bay window to the front and open access to a dining area with sliding doors leading into the rear garden. The kitchen provides ample storage and access to a timber outbuilding, which leads further into the garden. outside the property benefits from a pitched roof garage for possible extension or use as storage

Upstairs, there are three bedrooms, a family bathroom, and a loft hatch for additional storage. The rear garden is a mix of paving and lawn, enclosed by wooden fencing with gated access to the front.

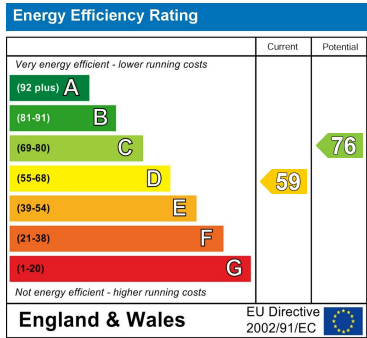
Ideal for buyers looking to put their own stamp on a property – contact Seths today to arrange a viewing.



Whilst every attempt has been made to ensure the accuracy of the floorplan contained here, measurements of doors, windows, rooms and any other items are approximate and no responsibility is taken for any error, omission or mis-statement. This plan is for illustrative purposes only and should be used as such by any prospective purchaser. The services, systems and appliances shown have not been tested and no guarantee as to their operability or efficiency can be given.  
Made with Metropix ©2025

Council Tax Band  
**C**  
Energy Performance Graph

Call us on  
**0116 266 9977**  
**sales@seths.co.uk**  
**www.seths.co.uk**



Agents Note: Whilst every care has been taken to prepare these particulars, they are for guidance purposes only. All measurements are approximate and are for general guidance purposes only and whilst every care has been taken to ensure their accuracy, they should not be relied upon and potential buyers are advised to recheck the measurements.

