

AVAILABLE



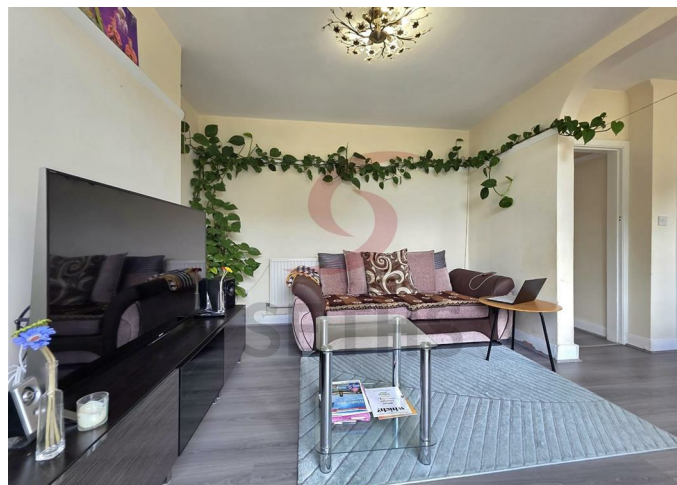
House - Semi-Detached

SPINNEY RISE LEICESTER LE4 3DY

£1,350 Per
Month

FEATURES

- Will be Newly Painted
- Semi-Detached
- Kitchen
- Family Bathroom
- 3 Bedroom House
- 2 Reception Rooms
- Spacious Garden
- Driveway for 2 Cars



 **SETHS**

3 Bedroom House - Semi-Detached located in Leicester

Seths are proud to market this 3 Bedroom Semi-Detached Family Home on Spinney Rise in the Birstall Area of Leicester.

The property is conveniently located close to Birstall Park and Ride and Local Schools which is ideal for families.

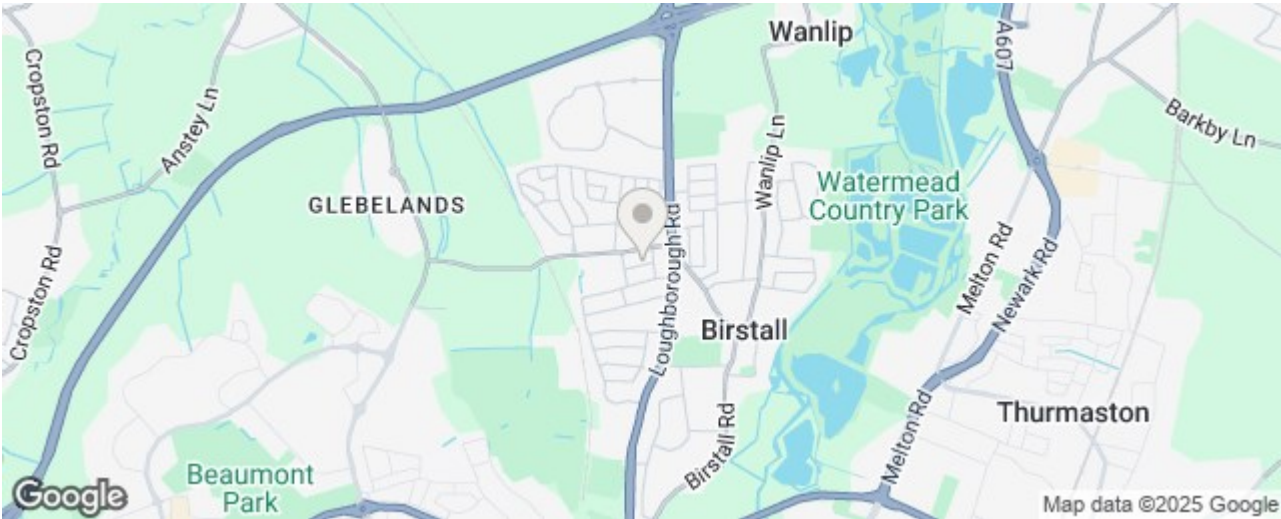
Upon entering the property is a Hallway, which provides access to the Lounge and Downstairs 2nd Reception Room/Dining Area.

There is also a Kitchen, benefiting from Wall and Base Units with Worktops Over, Sink and an Integrated Gas Hob and Electric Oven.

On the First Floor, there is a Family Bathroom inclusive of a Bath with Shower Over, Wash Basin and W.C. and there are also 3 Bedrooms.

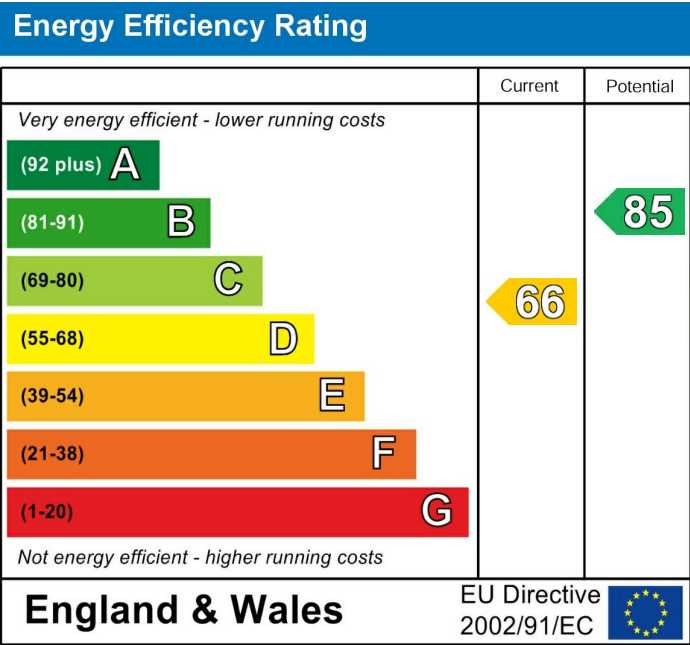
The property benefits from Gas Central Heating and Double Glazing throughout. There is also a Large Garden to the Rear and a Driveway to the front with 2 Parking Spaces.

Rent: £1350PCM
 Security Deposit: £1555
 Tenancy Length: 6 or 12 Months
 Council Tax Band: C



Call us on
 0116 266 9977
 let@seths.co.uk
 www.seths.co.uk

Council Tax Band
 C



Agents Note: Whilst every care has been taken to prepare these particulars, they are for guidance purposes only. All measurements are approximate and are for general guidance purposes only and whilst every care has been taken to ensure their accuracy, they should not be relied upon and potential buyers are advised to recheck the measurements.

