

FREEHOLD



House - Semi-Detached (EPC Rating:)

84 ASHCOTT AVENUE, STADIUM ESTATE,
LEICESTER, LE4 0ER

£350,000



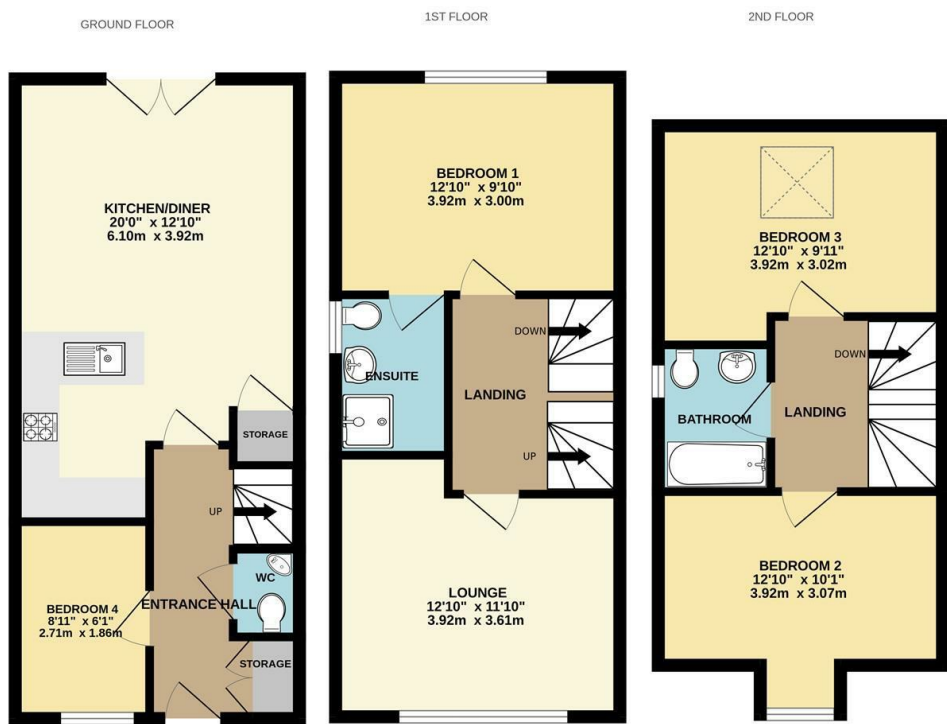
4 Bedroom House - Semi-Detached located in Leicester

*** GARAGE - FOUR BEDROOMS - STADIUM ESTATE - FAMILY HOME - NO CHAIN ***

Modern and spacious, this four-bedroom semi-detached home on Ashcott Avenue was built in 2022 and comes with the remaining NHBC warranty. Spread across three floors, the property features a stylish kitchen/diner with integrated appliances, a generous lounge, three bathrooms including an en-suite, and four well-proportioned bedrooms.

The home also benefits from a private driveway, integral garage, and an enclosed rear garden—ideal for families or professionals. This move-in-ready property combines comfort and practicality in a sought-after setting, conveniently located near local amenities, schools, and transport links.

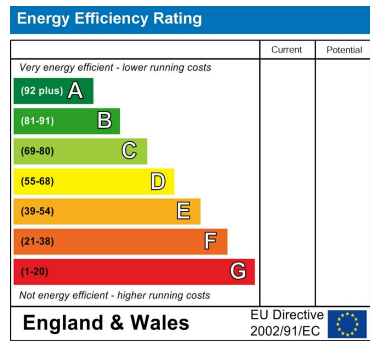
Contact Seths Today to Arrange A Viewing.



Whilst every attempt has been made to ensure the accuracy of the floorplan contained here, measurements of doors, windows, rooms and any other items are approximate and no responsibility is taken for any error, omission or mis-statement. This plan is for illustrative purposes only and should be used as such by any prospective purchaser. The services, systems and appliances shown have not been tested and no guarantee as to their operability or efficiency can be given.
Made with Metropix ©2025

Council Tax Band
C
Energy Performance Graph

Call us on
0116 266 9977
sales@seths.co.uk
www.seths.co.uk



Agents Note: Whilst every care has been taken to prepare these particulars, they are for guidance purposes only. All measurements are approximate and are for general guidance purposes only and whilst every care has been taken to ensure their accuracy, they should not be relied upon and potential buyers are advised to recheck the measurements.