

AVAILABLE



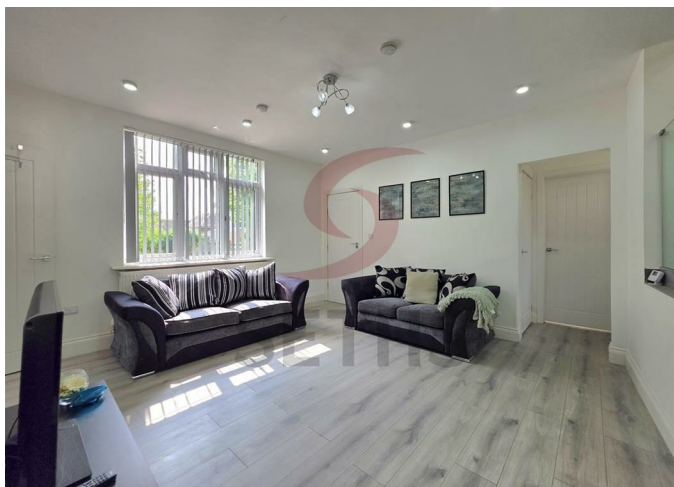
Apartment

GIPSY LANE LEICESTER LE5 0TB

£1,175 PCM

FEATURES

- Ground Floor Flat
- Lounge
- Fitted Bathroom
- Garden
- Fully Furnished
- Kitchen/Dining Area
- 2 Bedrooms
- Double Glazing



 **SETHS**

2 Bedroom Apartment located in Leicester

Seths are proud to market this GROUND FLOOR 2 Bedroom Apartment on Gipsy Lane, in the Humberstone Area of Leicester.

The property is conveniently located close to Local Schools, Places of Worship and Humberstone Heights Golf Course.

Upon entering the property is the Reception Room, providing access to Bedroom 1, Bedroom 2 and a few stairs up to the Kitchen.

The Fitted Kitchen consists of Wall and Base Units with Worktop Over, Sink, Integrated Gas Hob with Extractor Hood over and an Integrated Electric Oven.

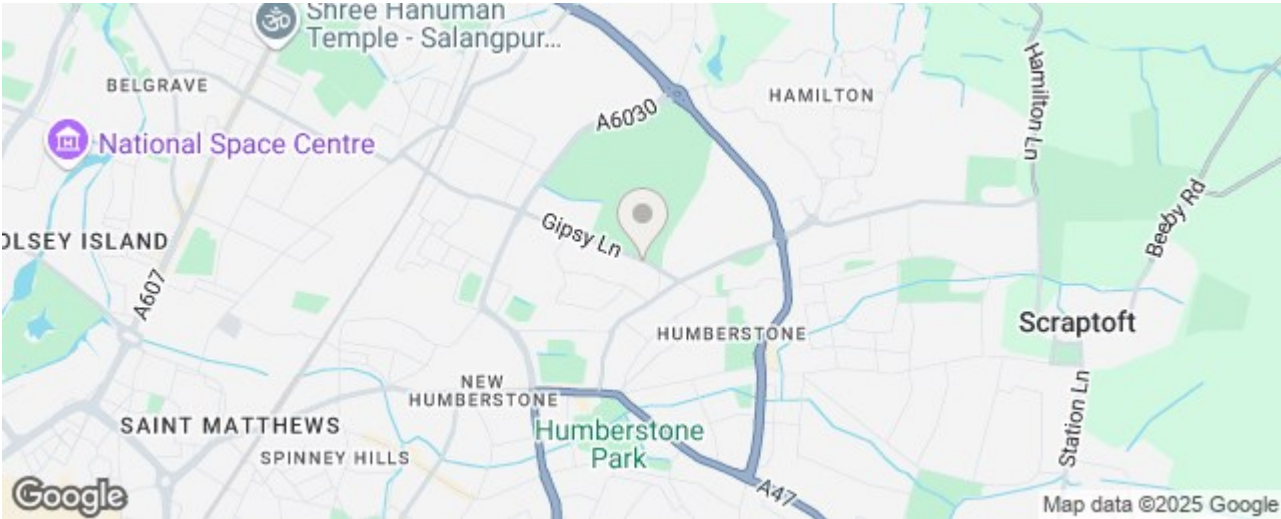
Next to the Kitchen is the Fitted Bathroom, inclusive of a Bath with Shower Over, Wash Basin and W.C.

The property benefits from Gas Central Heating and Double Glazing throughout and has a Private Garden to the rear of the property.

The property comes FULLY FURNISHED, inclusive of Sofas, Dining Table and Chairs, Fridge Freezer, Beds, Wardrobe and Chest of Drawers.

VERY Fast Wi-Fi for £15 Extra ONLY

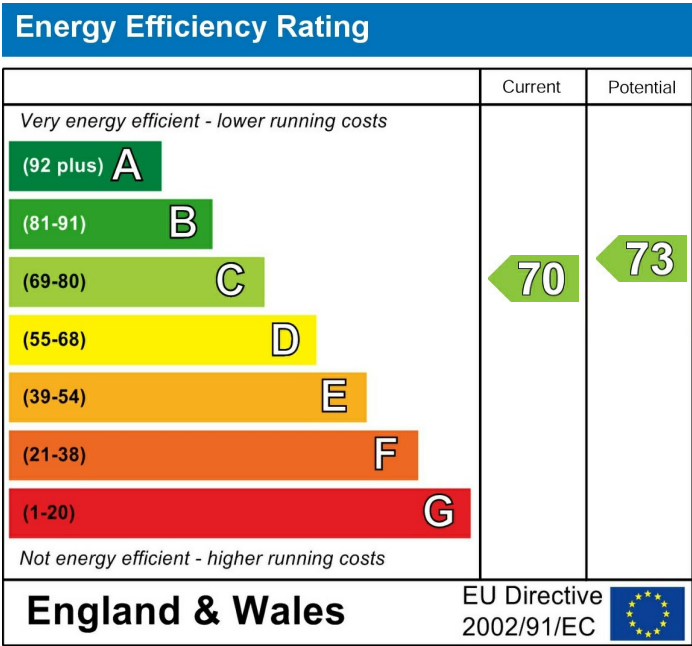
Rent: £1175PCM
Security Deposit: £1355
Tenancy Length: 6 or 12 Months
Council Tax: A



Call us on
0116 266 9977

let@seths.co.uk
www.seths.co.uk

Council Tax Band
A



Agents Note: Whilst every care has been taken to prepare these particulars, they are for guidance purposes only. All measurements are approximate and are for general guidance purposes only and whilst every care has been taken to ensure their accuracy, they should not be relied upon and potential buyers are advised to recheck the measurements.

