

AVAILABLE



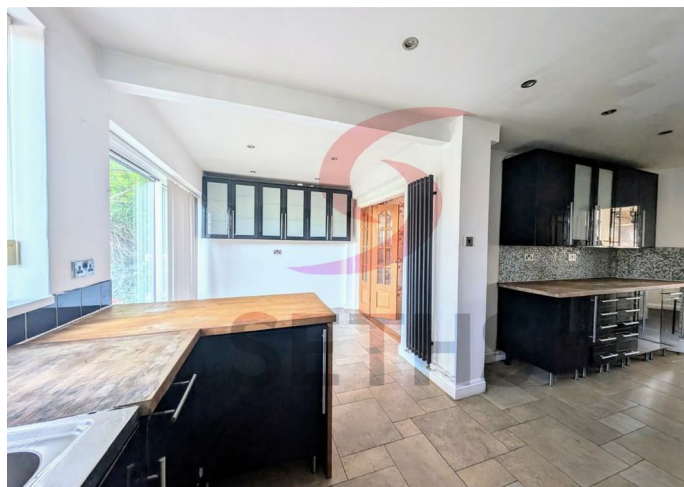
House - Semi-Detached

SEDGEFIELD DRIVE LEICESTER LE7 9PS

£1,500 PCM

FEATURES

- Semi Detached
- Four bedrooms
- Four Reception Rooms
- Large Kitchen
- Garden
- Driveway



 **SETHS**

4 Bedroom House - Semi-Detached located in Leicester

Seths Estate Agents bring to the market this delightful semi-detached house on Sedgefield Drive offers a perfect blend of comfort and convenience. With four spacious bedrooms, this property is ideal for families seeking a welcoming home. The four reception rooms provide ample space for relaxation and entertaining, ensuring that there is room for everyone to enjoy.

The exterior of the property features a well-maintained garden, perfect for outdoor activities or simply unwinding in the fresh air. Additionally, the driveway and garage offers convenient off-street parking, a valuable asset in today's busy world.

Thurnby is known for its friendly community and excellent local amenities, making it a desirable location for those looking to settle down. With easy access to nearby schools, parks, and shops, this home is not only a comfortable retreat but also a practical choice for modern living.

This semi-detached house on Sedgefield Drive is a wonderful opportunity for anyone looking to create lasting memories in a lovely neighbourhood. Don't miss the chance to make this charming property your new home.

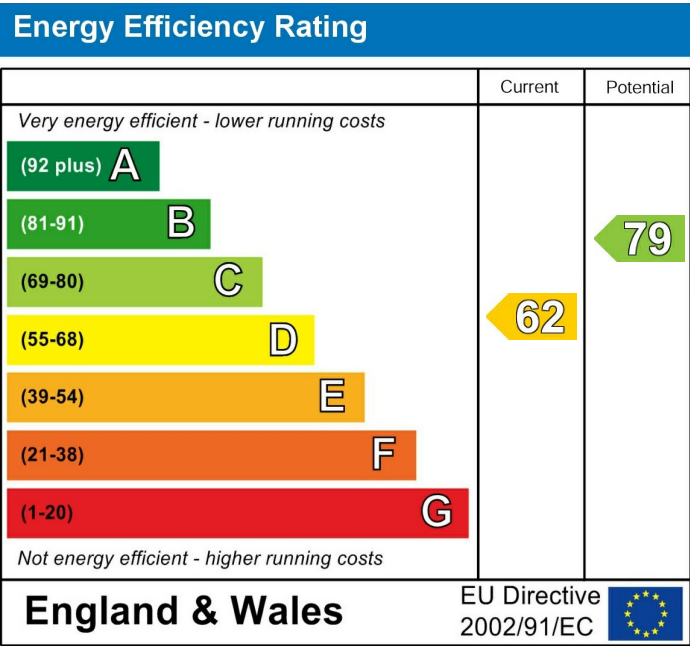
Rent: £1500PCM
Security Deposit: £1730.00
Tenancy Length: 6 or 12 Months
Council Tax Band: D



Call us on
0116 266 9977

let@seths.co.uk
www.seths.co.uk

Council Tax Band



Agents Note: Whilst every care has been taken to prepare these particulars, they are for guidance purposes only. All measurements are approximate and are for general guidance purposes only and whilst every care has been taken to ensure their accuracy, they should not be relied upon and potential buyers are advised to recheck the measurements.

