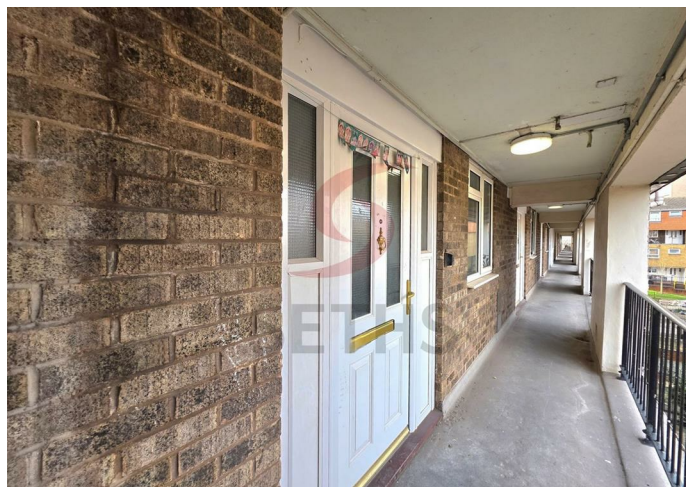
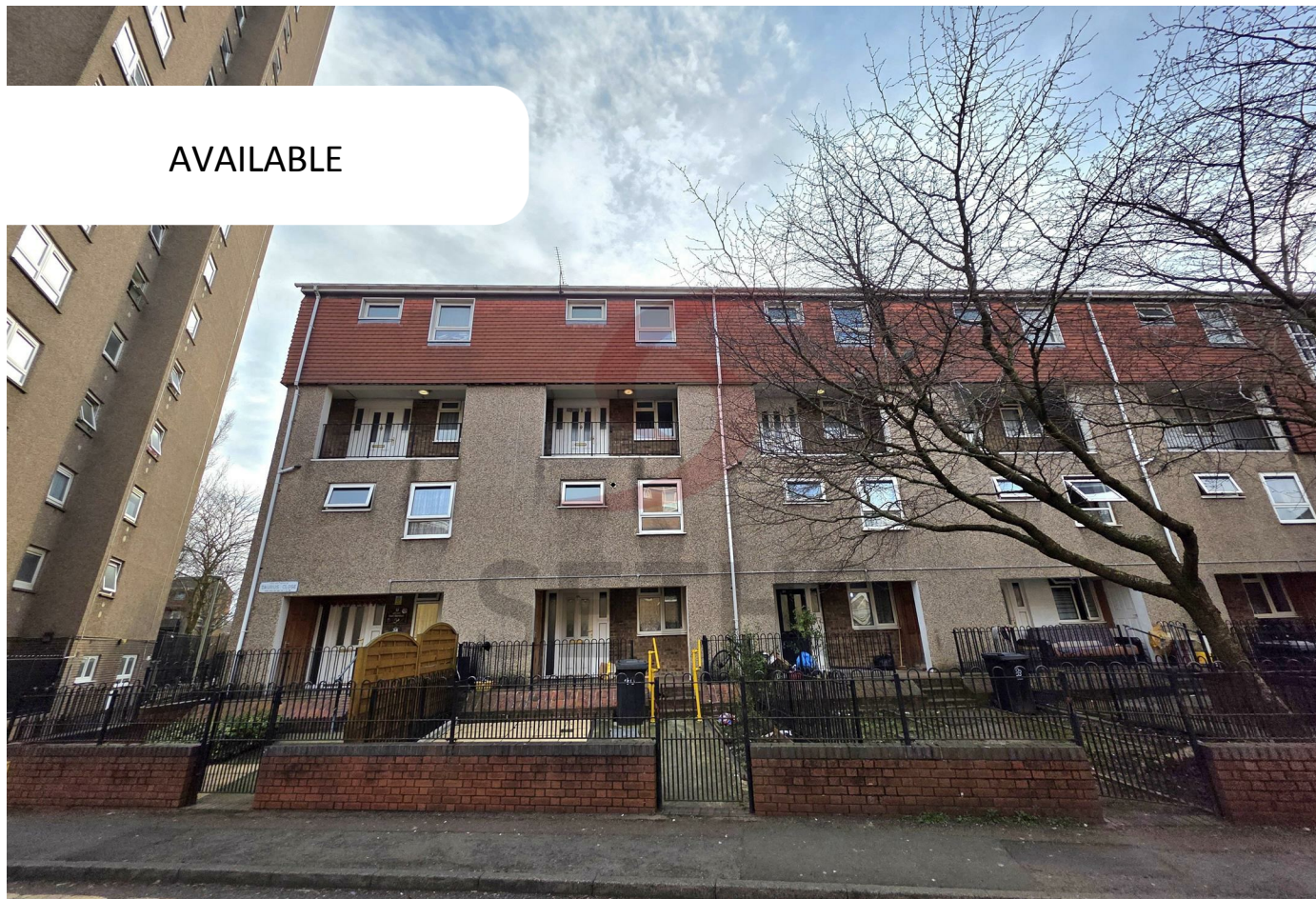


AVAILABLE



Maisonette

TAURUS CLOSE LEICESTER LE2 0UL

£1,150 PCM

FEATURES

- 3 Bedroom Maisonette
- New Kitchen
- 2 Storeys
- Double Glazing
- Newly Decorated
- New Painting
- Fitted Bathroom
- Close to Local Shops



 **SETHS**

3 Bedroom Maisonette located in Leicester

Seths are proud to market this NEWLY DECORATED 3 Bedroom 2nd Storey Maisonette on Taurus Close in the Highfields Area of Leicester.

There is a Communal Front Door for access to the Building and this Maisonette is on the 2nd Floor. Upon walking through the Front Door is a Hallway with access to the Kitchen, Lounge and W.C. The Kitchen is BRAND NEW benefitting from Wall and Base Units with Worktops Over, Integrated Electric Hob with Extractor Hood over, Electric Oven and Sink.

The Lounge benefits from a small Balcony Area.

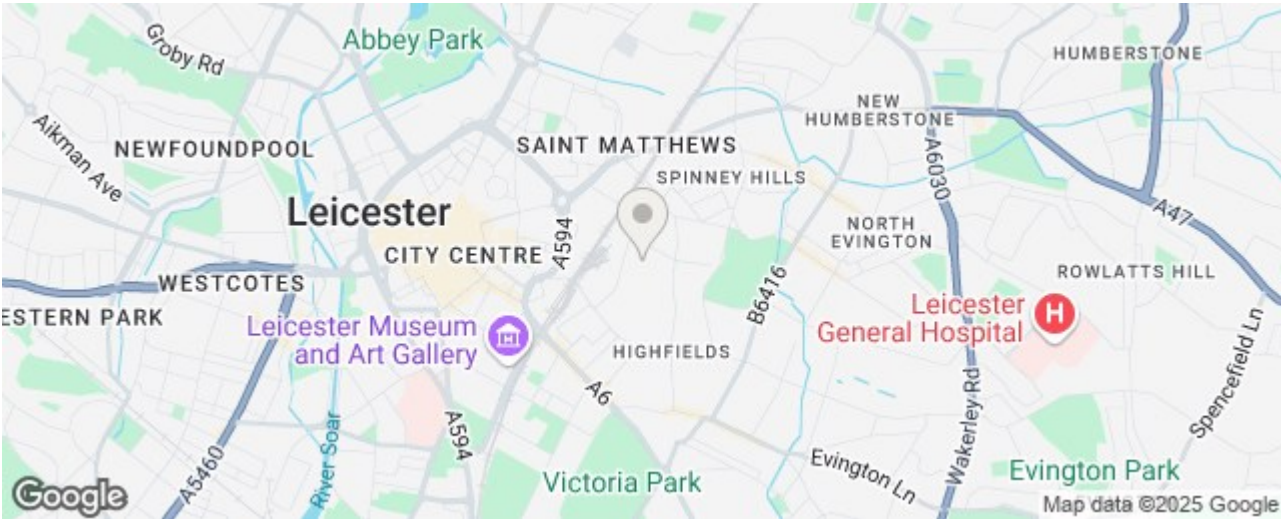
On the First Floor, there are 3 Bedrooms and a Fitted Bathroom inclusive of a Bath, Wash Basin and W.C.

The property benefits from Double Glazing throughout and there is a Permit Required to be obtained for Street Parking.

The property is ideally located close to Local Shops and Places of Worship.

***As well as the Rent, there would be an additional £150.00 per month required to be paid towards District Heating and Hot Water. (Subject to change to a meter in the future).

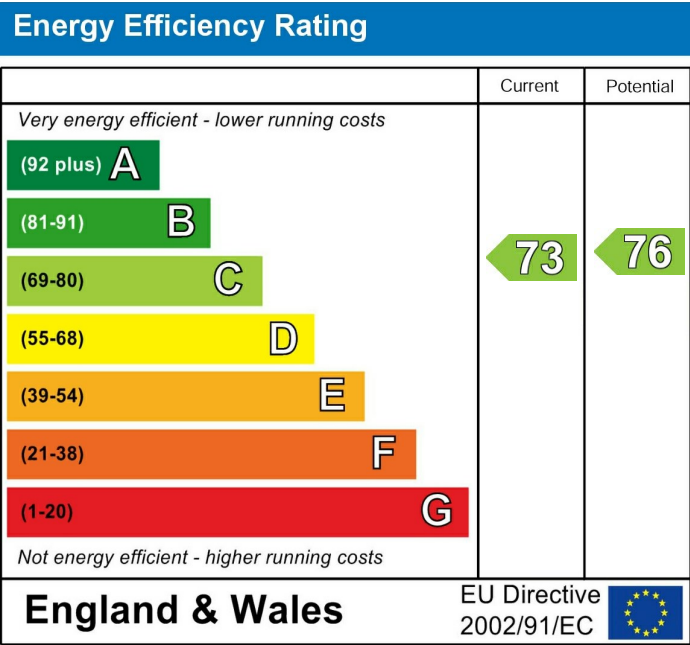
Rent: £1150PCM + £150PCM for Heating and Hot Water (District Supply)
Security Deposit: £1325
Tenancy Length: 6 or 12 Months
Council Tax Band: A



Call us on
0116 266 9977

let@seths.co.uk
www.seths.co.uk

Council Tax Band
A



Agents Note: Whilst every care has been taken to prepare these particulars, they are for guidance purposes only. All measurements are approximate and are for general guidance purposes only and whilst every care has been taken to ensure their accuracy, they should not be relied upon and potential buyers are advised to recheck the measurements.

