

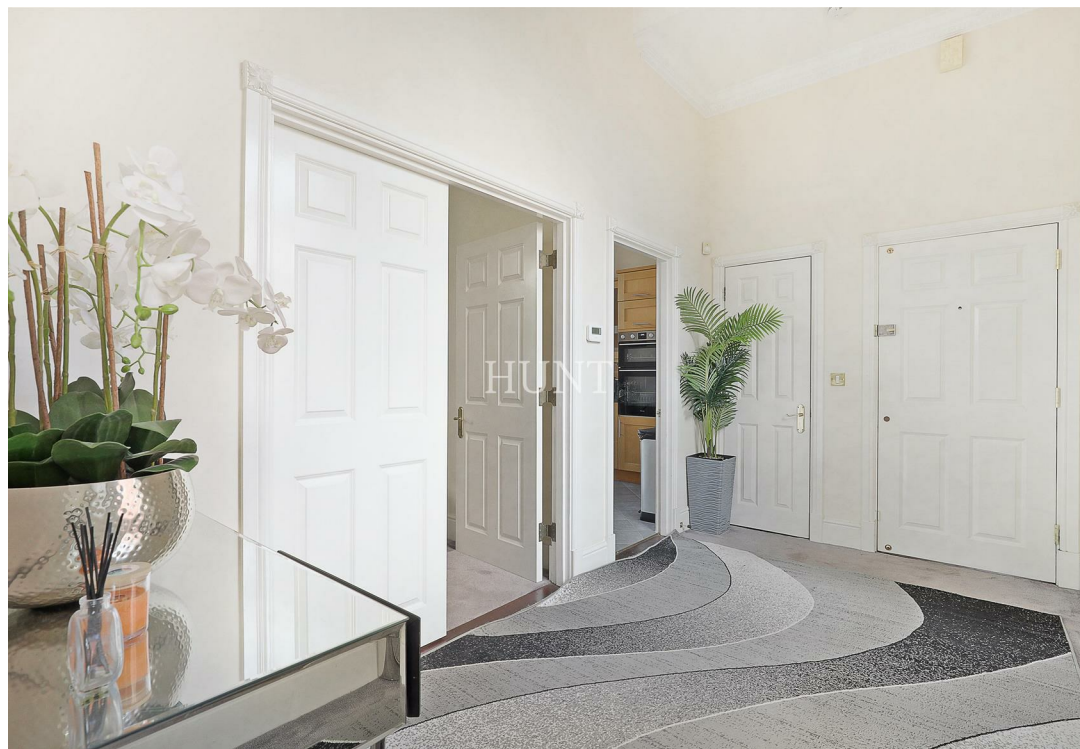
HUNT



Sutherland House | Repton Park | Woodford Green | IG8

£500,000





Two double bedroom, two bathroom second floor apartment located in one of Repton Parks period buildings Sutherland House.

Boasting a spacious reception room and fully integrated kitchen. High ceilings and sash windows with an abundance of natural light throughout. Complemented by a large master bedroom with double fitted wardrobes and en suite and a further second bedroom and family bathroom.

Repton Park offers 24-hour concierge staff, night time security guards and an exclusive Virgin Active Spa Gym and beauty salon on site. 145 acres of mature parkland & access to Claybury Woods which surrounds the park creating over 300 acres to enjoy jogging, walks and bike rides.



HUNT

REPTON
PARK

REPTON
PARK





- Top Floor
 - Spacious Accommodation
 - Two Bedrooms & Two Bathrooms
 - Stunning Views over Grounds
 - Allocated Parking For Two Cars
- 145 Acres of Mature Woodland To Enjoy
- 24 Hour Concierge, Security & CCTV
- Virgin Active On-Site Gym, Pool & Bistro
 - Sole Agent







732 Chigwell Road, Woodford Green, Essex, IG8 8AL



020 85027667



info@huntpropertyservices.co.uk



www.huntpropertyservices.co.uk



PROPERTY MISDESCRIPTIONS ACT 1991: The Agents has not tested any apparatus, equipment, fixtures and fittings, or services, so cannot verify that they are in working order or fit for the purpose. The buyer is advised to obtain verification from his or her Professional Buyer. References to the Tenure of the property are based on information supplied by the Vendor. The agents have not had sight of the title documents. The buyer is advised to obtain verification from their Solicitor. You are advised to check the availability of any property before travelling any distance to view.