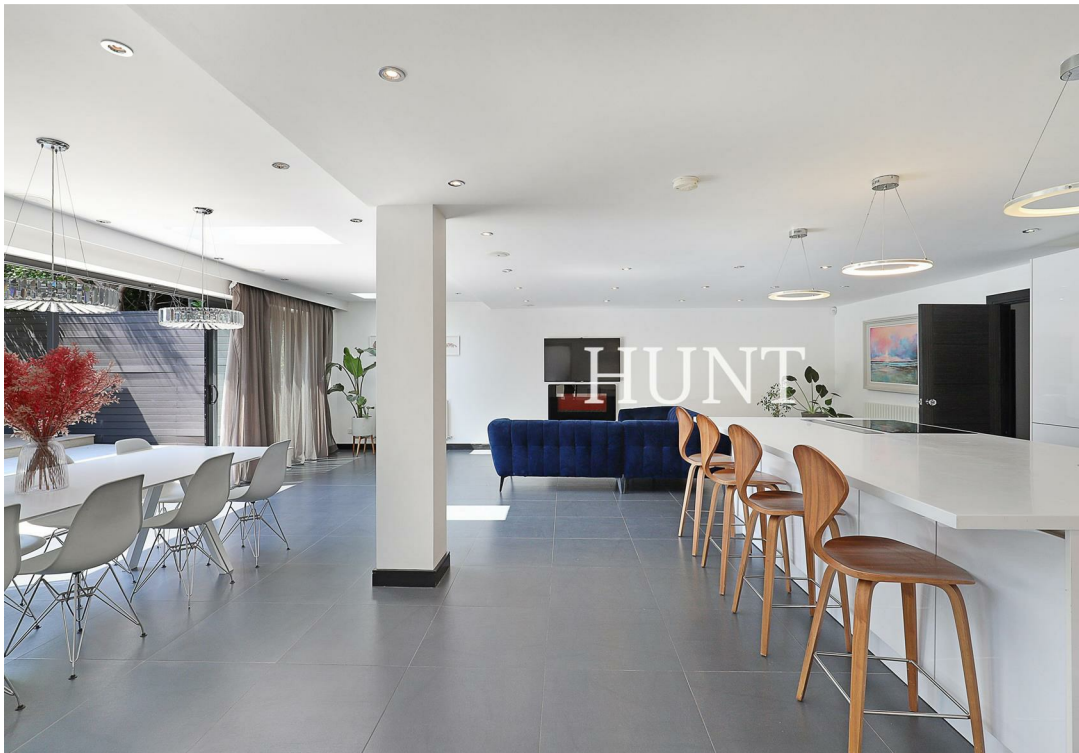




Campions | | Loughton | IG10

Offers In Excess Of £1,699,000





Nestled within one of the most sought after roads in Loughton on the Goldings Manor Estate is this five double bedroom detached property listed exclusively with Hunt. Just a short walk or drive to the high street and central line tube and all major motorways.

Offering three reception rooms on the ground floor with bifold doors from the main reception kitchen family room directly onto the very level garden. Outdoor dining area under a smart canopy with feature fire and large patio entertaining area to enjoy evenings in this tranquil setting.

Separate newly fitted utility room just off the kitchen diner, also a smart office to the front of the house and a great sized second reception.

Five double bedrooms, four of those on the first floor, two with ensuite shower rooms and a large family bathroom with oversized freestanding bath tub. Exceptionally large Principal bedroom, ensuite bathroom and dressing room across the whole top floor.

Sole Agent, Chain Free



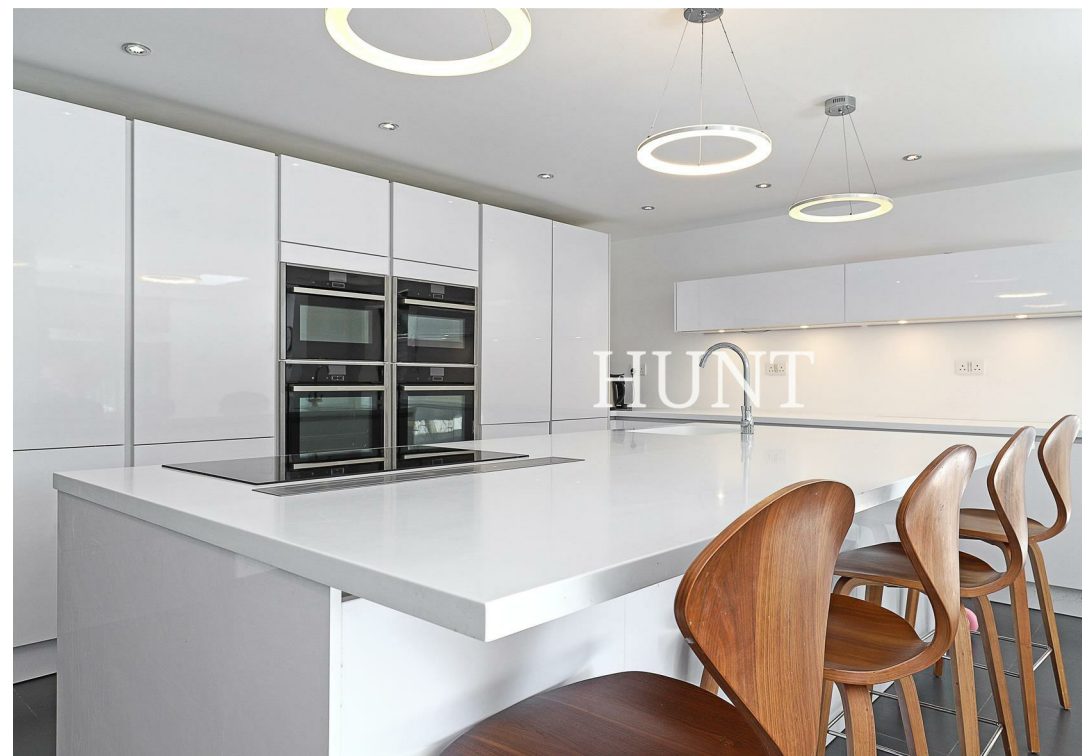
HUNT



HUNT



- CONTEMPORARY DETACHED PROPERTY
 - FIVE DOUBLE BEDROOMS
 - THREE RECEPTIONS
 - THREE BATHROOMS
- NEAR TO ALL THE BEST LOCAL SCHOOLS
- LOUGHTON AND EPPING HIGH STREET NEARBY
- DAVID LLOYD GYM WITH KIDS CLUB & OUTDOOR POOL
- LARGE SECURE DRIVEWAY FOR FOUR CARS
 - EXCLUSIVELY LISTED WITH HUNT
 - VIEWING BY APPOINTMENT ONLY





HUNT



732 Chigwell Road, Woodford Green, Essex, IG8 8AL



020 85027667



info@huntpropertyservices.co.uk



www.huntpropertyservices.co.uk



PROPERTY MISDESCRIPTIONS ACT 1991: The Agents has not tested any apparatus, equipment, fixtures and fittings, or services, so cannot verify that they are in working order or fit for the purpose. The buyer is advised to obtain verification from his or her Professional Buyer. References to the Tenure of the property are based on information supplied by the Vendor. The agents have not had sight of the title documents. The buyer is advised to obtain verification from their Solicitor. You are advised to check the availability of any property before travelling any distance to view.