



HUNT

HUNT

Tavistock House | | Woodford Green | IG8

£525,000









Top floor two double bedroom one bathroom apartment. Newly fitted integrated gloss kitchen with quartz work surfaces and space for dining.

South West facing views from the spacious lounge to Tavistock House's own private gated garden area.

Set within the prestigious gated development with 24 concierge night time security 145 acres of mature parkland and an exclusive Virgin Active health club with spa facilities gym and pool.

Luxury living at its best in this beautiful setting.  
Service charge - £3850 approx.





HUNT

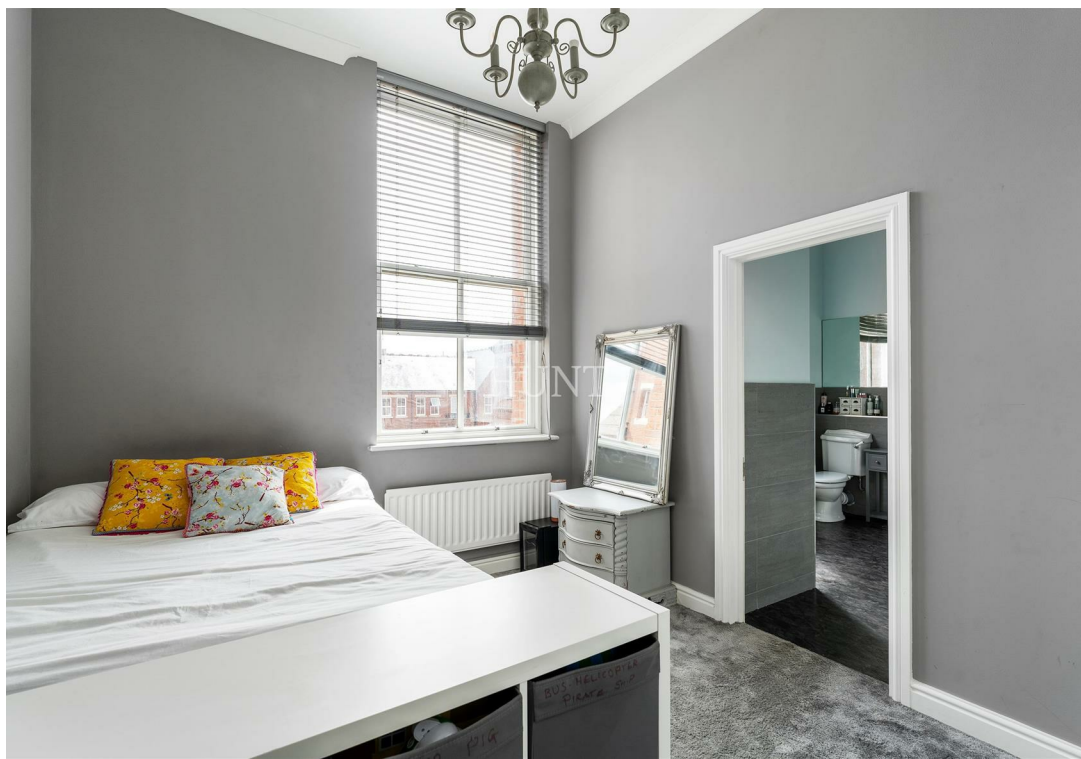
REPTON  
PARK

REPTON  
PARK

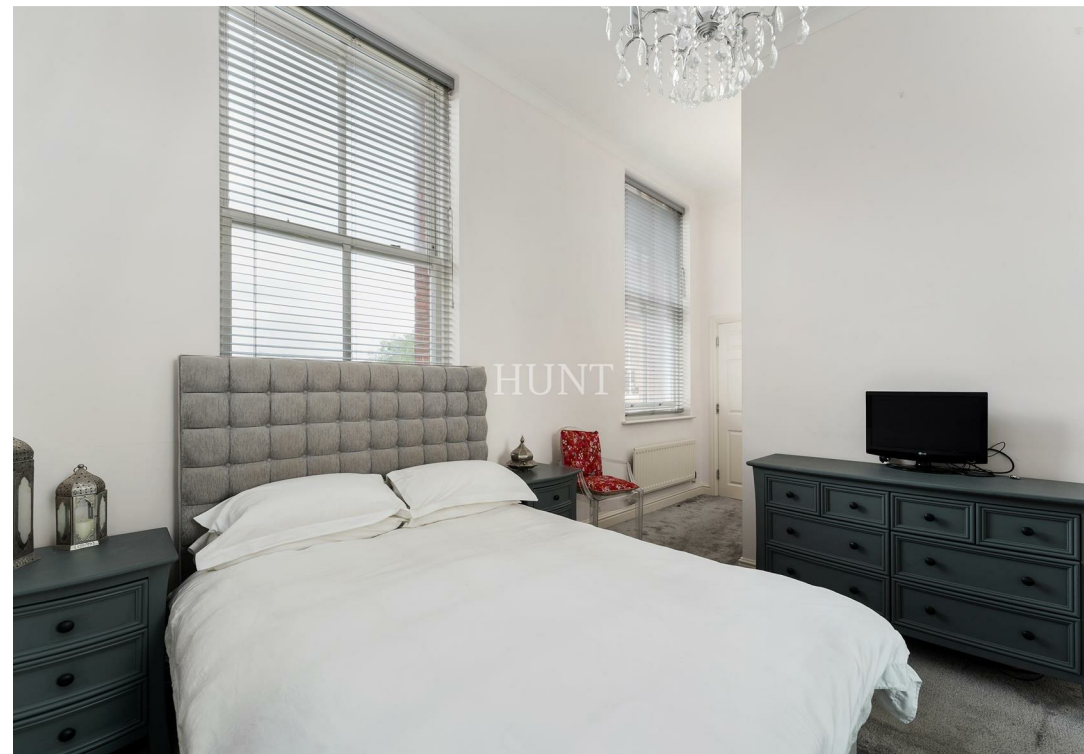








- TOP FLOOR APARTMENT WITHIN THE PERIOD BUILDINGS
  - TWO DOUBLE BEDROOMS
  - ENSUITE BATHROOM
  - ALLOCATED PARKING
- 24 HOUR CONCIERGE & NIGHT TIME SECURITY
  - 145 ACRES OF MATURE PARKLAND
  - VIRGIN ACTIVE SPA & GYM
- PRIVATE GATED GARDENS FOR TAVISTOCK HOUSE
  - LOFT SPACE AVAILABLE TO PURCHASE
  - CHAIN FREE & SOLE AGENT







BARBICAN DRIVE  
CLAYTON HALL  
THE MANOR  
CLAYTON VILLAGE

HUNTING





732 Chigwell Road, Woodford Green, Essex, IG8 8AL



020 85027667



info@huntpropertyservices.co.uk



www.huntpropertyservices.co.uk



PROPERTY MISDESCRIPTIONS ACT 1991: The Agents has not tested any apparatus, equipment, fixtures and fittings, or services, so cannot verify that they are in working order or fit for the purpose. The buyer is advised to obtain verification from his or her Professional Buyer. References to the Tenure of the property are based on information supplied by the Vendor. The agents have not had sight of the title documents. The buyer is advised to obtain verification from their Solicitor. You are advised to check the availability of any property before travelling any distance to view.