

# HUNT



Chapel Mews | Repton Park | Woodford Green | IG8

£925,000





HUNT



Exceptionally well positioned end of terrace house set over two floors  
Offering three bedrooms and three bathrooms this house has been beautifully renovated to include a brand new solid wood kitchen with quartz worktops and integrated appliances.  
Lounge diner with french doors to a surprisingly large south west facing garden with sunset to enjoy.  
On the ground floor is a large bedroom and ensuite bathroom with french doors to the garden.  
First floor offers two further double bedrooms including the principal bedroom with ensuite which boasts a large walk in shower.  
Family bathroom & utility area. High end flooring throughout with luxury carpets on the upper floor.  
Also boasting a pretty front garden which enjoys morning sun and private parking.  
Full planning permission passed for a loft conversion and a back extension.





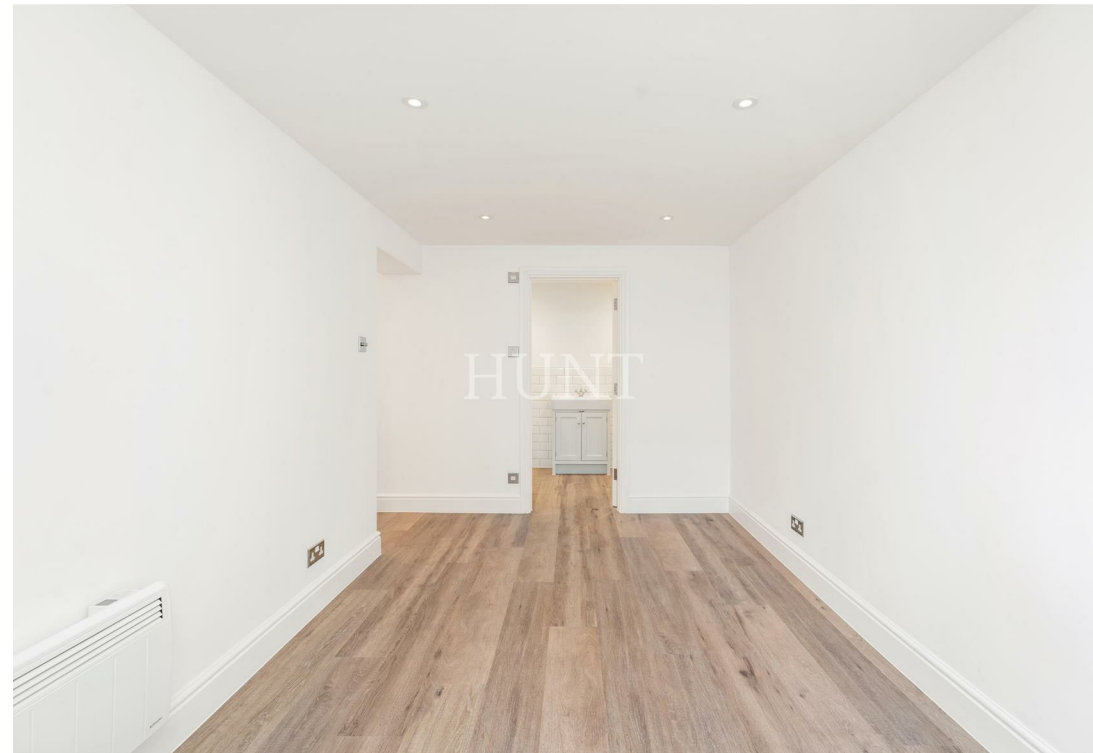








- MEWS HOUSE SET WITHIN REPTON PARK
- THREE BEDROOMS AND THREE BATHROOMS
  - LARGE RECEPTION
  - INTEGRATED KITCHEN
- PRETTY GARDEN WITH LARGE PATIO AREA
  - ALLOCATED PARKING
- 24 HOUR CONCIERGE, NIGHT SECURITY
  - 145 ACRES OF MATURE PARKLAND
  - VIRGIN ACTIVE SPA, GYM & POOL
  - SOLE AGENT/CHAIN FREE











732 Chigwell Road, Woodford Green, Essex, IG8 8AL



020 85027667



info@huntpropertyservices.co.uk



www.huntpropertyservices.co.uk



PROPERTY MISDESCRIPTIONS ACT 1991: The Agents has not tested any apparatus, equipment, fixtures and fittings, or services, so cannot verify that they are in working order or fit for the purpose. The buyer is advised to obtain verification from his or her Professional Buyer. References to the Tenure of the property are based on information supplied by the Vendor. The agents have not had sight of the title documents. The buyer is advised to obtain verification from their Solicitor. You are advised to check the availability of any property before travelling any distance to view.