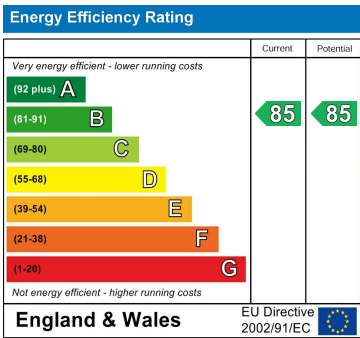
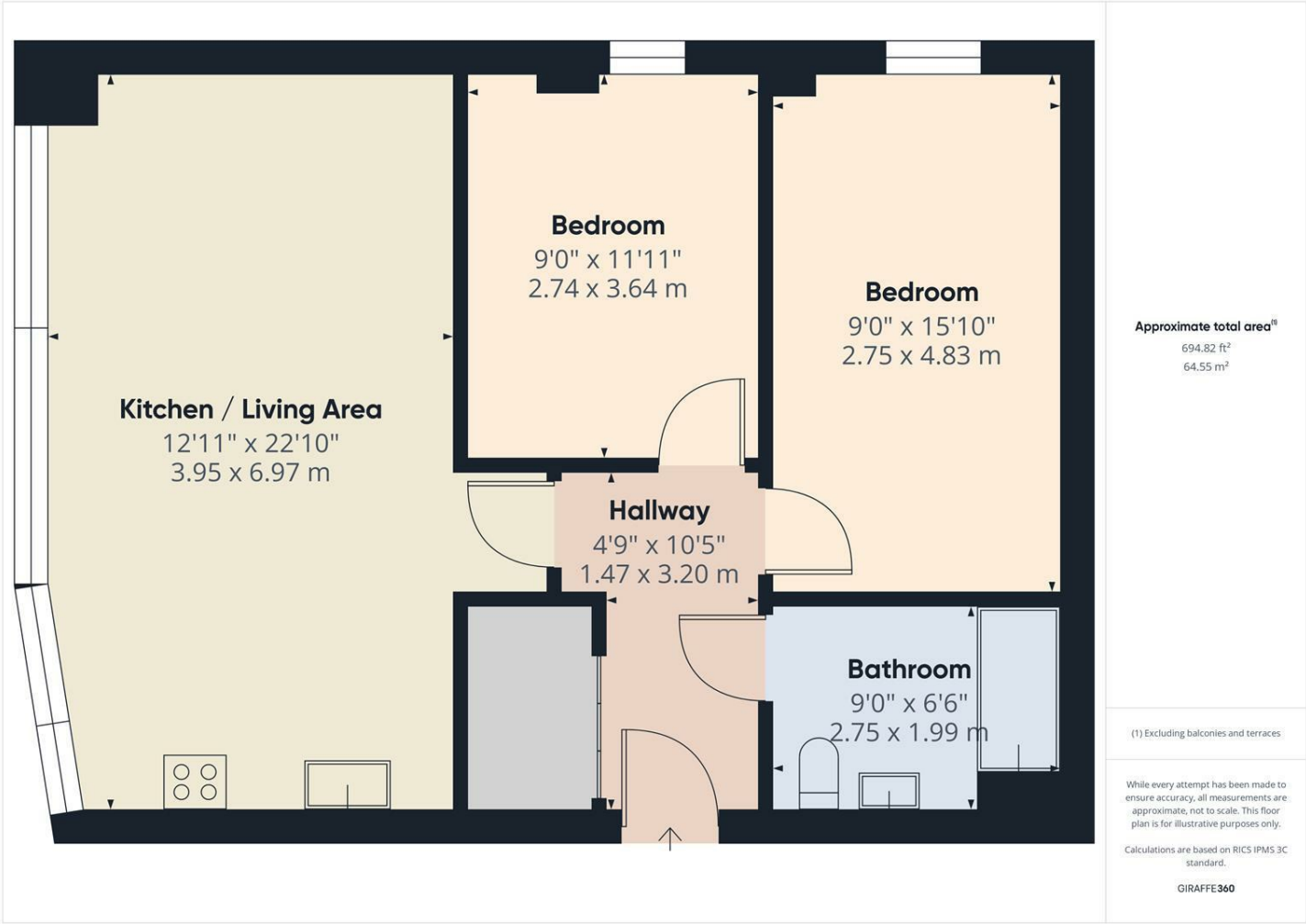




Smokehouse Two, North Shields



Important Information
All rooms have been measured with electronic laser and are approximate measurements only. None of the services to the above property have been tested by ourselves, and we cannot guarantee that the installations described in the details are in perfect working order. Brannen & Partners for themselves, the vendors or lessors, produce these brochures in good faith and are a guidelines only. They do not constitute any part of a contract and are correct to the best of our knowledge at the time of going to press. Pictures may appear distorted due to enlargement and are not to be used to give an accurate reflection of size. All negotiations and payments are subject to contract.

Offers Over £200,000

Description

CONTEMPORARY TWO BEDROOM THIRD FLOOR APARTMENT SITUATED WITHIN THIS STYLISH DEVELOPMENT CLOSE TO THE FISH QUAY IN NORTH SHIELDS

We welcome to the market this stylish two bedroom third floor apartment situated within this exclusive development located on the waters edge of the River Tyne. Boasting bright and airy open plan living, walking distance to the town centre, Fish Quay and Tynemouth Village.

Briefly comprising: Secure communal entrance with a lift and stairs to all floors. Private hallway offering access to all rooms and benefitting from a large cupboard providing storage, plumbing for a washing machine and housing an air filtration system. The impressive open plan lounge/kitchen/diner is a bright and airy space with floor to ceiling windows allowing plenty of light to fill the room. The modern kitchen has fitted units which includes an integrated electric hob, oven, extractor fan and fridge/freezer. There are two double bedrooms and bathroom comprising a bath with shower over, hand basin, W.C. and heated towel rail.

Externally there is a designated parking bay and lockable cycle store.

Situated close to the North Shields ferry port and the Fish Quay in North Shields offering an extensive array of restaurants, bars and cafe's. Only a short walk to the centre of North Shields for local shops, amenities and the Metro station. Tynemouth Village is also within walking distance and has a great choice of shops, restaurants, award winning Long Sands Beach and is host to a weekend market.

Secure Communal Entrance

Private Hallway

Lounge/Kitchen/Diner
22'10" x 12'11"

Bedroom One
15'10" x 9'0"

Bedroom Two
11'11" x 8'11"

Bathroom
9'0" x 6'6"

Externally
Externally there is a designated parking bay and lockable cycle store.

Tenure
Leasehold

