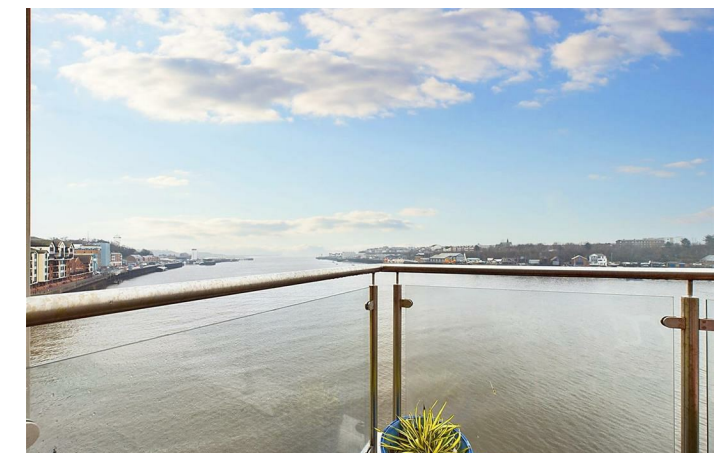
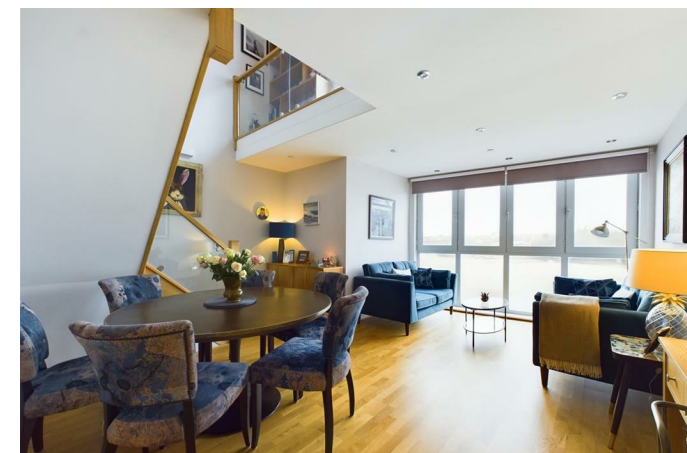
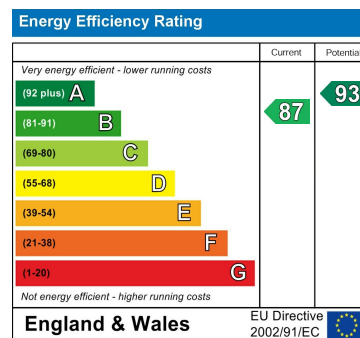




Swan Quay, North Shields



Important Information

All rooms have been measured with electronic laser and are approximate measurements only. None of the services to the above property have been tested by ourselves, and we cannot guarantee that the installations described in the details are in perfect working order. Brannen & Partners for themselves, the vendors or lessors, produce these brochures in good faith and are a guidelines only. They do not constitute any part of a contract and are correct to the best of our knowledge at the time of going to press. Pictures may appear distorted due to enlargement and are not to be used to give an accurate reflection of size. All negotiations and payments are subject to contract.

Price Guide £479,950

Description

FANTASTIC OPPORTUNITY TO ACQUIRE THIS STUNNING FOUR BEDROOM TOWNHOUSE SITUATED ON THE FISH QUAY IN NORTH SHIELDS OFFERING WONDERFUL VIEWS OF THE RIVER TYNE AND TOWARDS THE MOUTH OF THE TYNE

Substantial four bedroom townhouse occupying an enviable position on the River Tyne with wonderful views and balcony. Boasting versatile accommodation, modern interiors, two bathrooms, stylish lounge areas with a mezzanine level giving direct access to a balcony overlooking the river.

Briefly comprising: Private entrance hallway with stairs to the first floor and a dumbwaiter to the kitchen. To the first floor is a generous size double bedroom offering river views and fitted sliding wardrobes. There is another bedroom on this level which is being utilised as a home office, a handy utility room for storage and plumbing for a washing machine. The fully tiled bathroom comprises a bath, shower over, hand basin, W.C. and heated towel rail. To the second floor are two further double bedrooms, one of which overlooks the river and benefits from an en-suite shower room, the other has a large walk in wardrobe with sliding

FANTASTIC OPPORTUNITY TO ACQUIRE THIS STUNNING FOUR BEDROOM TOWNHOUSE SITUATED ON THE FISH QUAY IN NORTH SHIELDS OFFERING WONDERFUL VIEWS OF THE RIVER TYNE AND TOWARDS THE MOUTH OF THE TYNE

Substantial four bedroom townhouse occupying an enviable position on the River Tyne with wonderful views and balcony. Boasting versatile accommodation, modern interiors, two bathrooms, stylish lounge areas with a mezzanine level giving direct access to a balcony overlooking the river.

Briefly comprising: Private entrance hallway with stairs to the first floor and a dumbwaiter to the kitchen. To the first floor is a generous size double bedroom offering river views and fitted sliding wardrobes. There is another bedroom on this level which is being utilised as a home office, a handy utility room for storage and plumbing for a washing machine. The fully tiled bathroom comprises a bath, shower over, hand basin, W.C. and heated towel rail. To the second floor are two further double bedrooms, one of which overlooks the river and benefits from an en-suite shower room, the other has a large walk in wardrobe with sliding doors. To the third floor is a well equipped modern kitchen with fitted wall and base units and a dumbwaiter. Integrated appliances include a double oven, microwave, dishwasher, induction hob, extractor fan and fridge/freezer. The lounge/diner has open views across the river and a stylish staircase to a mezzanine sitting room which offers access to a private balcony via bi-fold doors. This impressive living area has a vaulted ceiling creating a great sense of space. There is additional storage in the eaves.

Externally there are two designated parking spaces and a lockable storage area. To the top floor is a wonderful balcony offering superb views over the River Tyne and towards the sea at the Mouth of the Tyne.

Situated on the Fish Quay in North Shields offering an extensive array of restaurants, bars and cafe's. Only a short walk to the centre of North Shields for local shops, amenities and the Metro station. Tynemouth Village is also within walking distance and has a great choice of shops, restaurants, award winning Long Sands Beach and is host to a weekend market.

Entrance Hallway

Bedroom Three

13'8" x 10'9"

Bedroom/Office

10'9" x 9'0"

Utility Room

5'5" x 5'5"

Bathroom

12'11" x 6'6"

Bedroom

16'0" x 10'8"

En-suite

6'3" x 5'2"

Bedroom

12'4" x 9'7"

Kitchen

12'5" x 11'5"

Lounge/Diner

17'7" x 15'10"

Sitting Room

19'9" x 12'3"

Balcony

Storage Area

6'9" x 6'8"

Externally

There are two designated parking spaces and lockable storage area. To the top floor is a wonderful balcony offering superb views over the River Tyne and towards the sea at the mouth of the Tyne

