

Stowfield Cable works

Lydbrook, Gloucestershire
GL17 9NG

Availability: 40,415 sq ft
Rental: £5.50 per sq ft



General site view

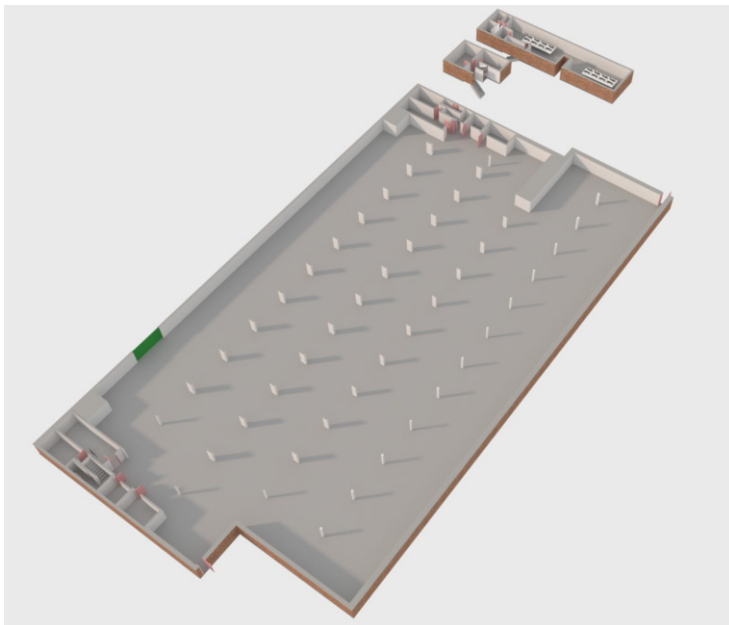


Building No.1 - West & Southern elevations

Historic industrial site re-invented for modern requirements. The site comprises logistics, industrial and office buildings.

Suitable uses include logistics, storage, processing and office accommodation. Units can be fitted according to bespoke occupier requirements. Stowfield Cable Works is situated on the B4234 within 10 minutes of the A40 dual carriageway link to the motorway system (M50 and M4)

Building #1, Unit 1 plan



Key Facts

Building #1

UNIT No: 1
UNIT SIZE: 40,415 sqft
RENT: £18,524 pcm
inc. service charge

Availability: 40,415 sq ft
Building size: 40,115 sq ft
Building units : 1

Highlights of your unit:

- 35,000 sqft yard space
- 7m eaves height
- Site reception service
- 3- Phase electrical supply

STOWFIELD CABLE WORKS
LYDBROOK
GLOUCESTERSHIRE
GL17 9NG

TEL : 0207 930 5724

SALES@STOWFIELD.CO.UK