



## 77 Shaftesbury Road

Watford, WD17 2RG

**Asking Price £385,000**

Nestled on the charming Shaftesbury Road in Watford, this delightful mid-terrace house offers a perfect blend of character and modern living. Built in 1900, the property boasts a rich history while providing a comfortable and inviting atmosphere for its residents.

- Two Bedroom Terrace
- Lounge/ Dining Room
- Bathroom Off Landing
- Fitted Kitchen
- Rear Garden
- Opposite Family Park
- Close To Watford Junction
- Close To Town Centre
- No Upper Chain!

### Viewing

Please contact our Watford Office on 01923224030 if you wish to arrange a viewing appointment for this property or require further information.



2



1

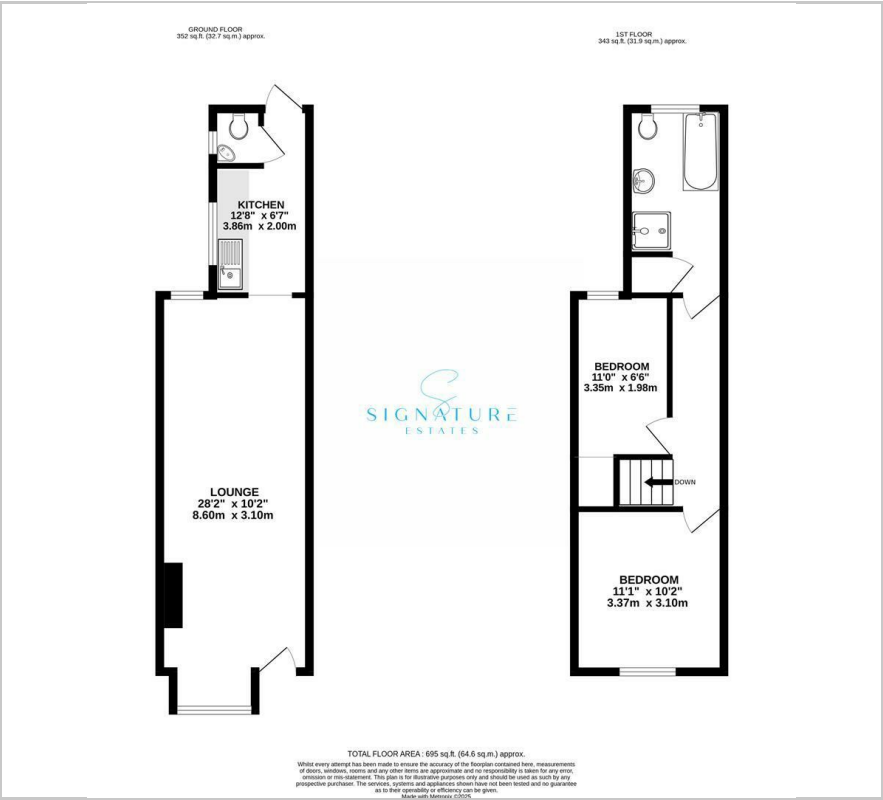


1

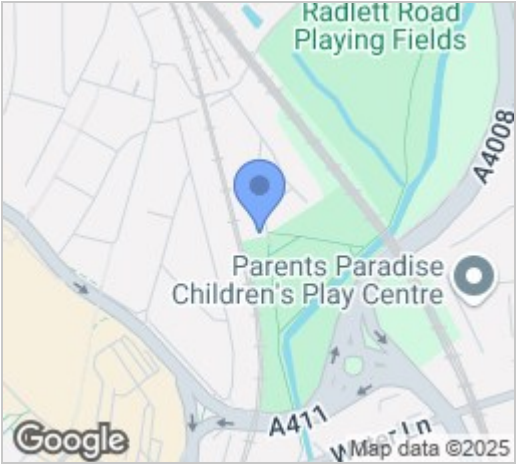




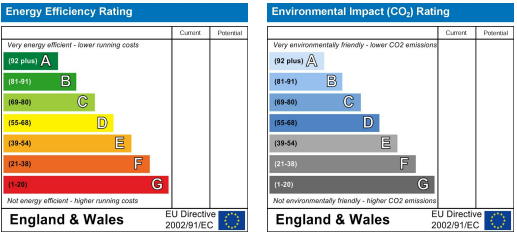
Floor Plan



Area Map



Energy Efficiency Graph



These particulars, whilst believed to be accurate are set out as a general outline only for guidance and do not constitute any part of an offer or contract. Intending purchasers should not rely on them as statements of representation of fact, but must satisfy themselves by inspection or otherwise as to their accuracy. No person in this firms employment has the authority to make or give any representation or warranty in respect of the property.