



SIGNATURE

Wellfield Close

Hatfield, AL10 0BU

£1,300

Welcome to your cosy sanctuary nestled conveniently close to Hatfield town centre and the train station. This delightful one double bedroom ground floor flat offers a perfect blend of comfort and convenience, making it an ideal choice for singles or couples seeking a tranquil yet accessible living space.

Step outside to your own slice of green paradise. The private garden offers a serene outdoor space where you can unwind, entertain guests, or indulge in some gardening activities.

Say goodbye to parking woes with hassle-free residential parking permits. Your vehicle will have a secure spot, ensuring convenient access whenever you need it.

Situated just a stone's throw away from Hatfield town centre and the train station, you'll have easy access to an array of shops, restaurants, cafes, and transportation options. Whether it's running errands or exploring the local scene, everything is within reach.

Don't miss out on the opportunity to make this charming flat your new home! Schedule a viewing today and experience the perfect blend of comfort, convenience, and tranquillity.

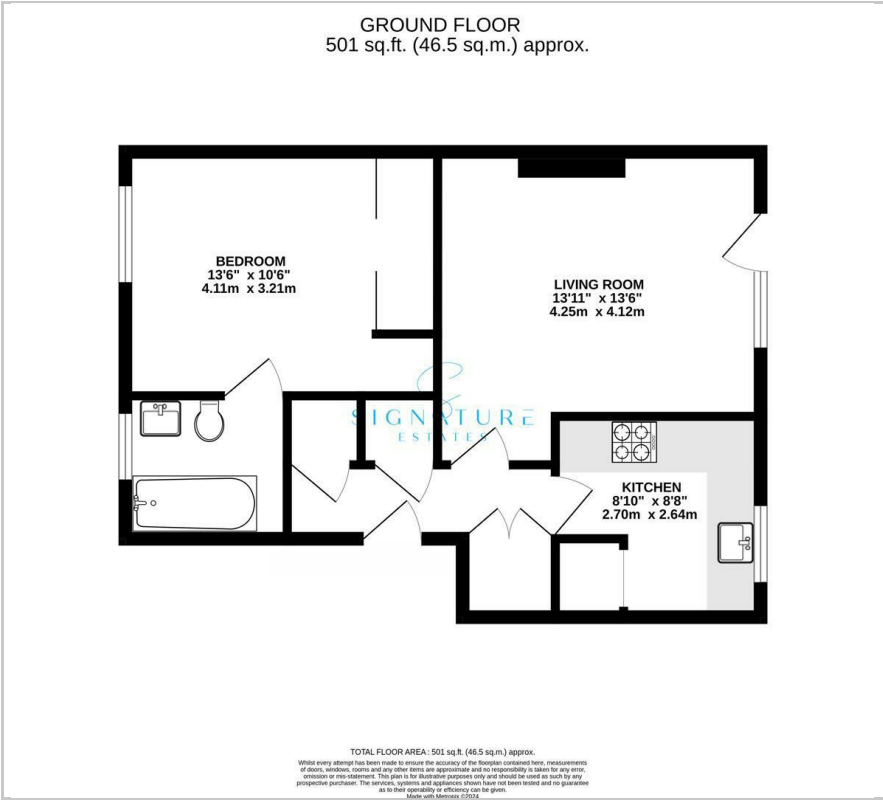
Viewing

Please contact our Watford Office on 01923224030 if you wish to arrange a viewing appointment for this property or require further information.

- Charming Ground Floor Flat with Private Garden
- Residential Parking Permits
- Bright and airy living space, perfect for relaxing or entertaining guests.
- Well-appointed kitchen with modern appliances for your culinary adventures.
- Stylish bathroom for your comfort and convenience.
- Long term rental
- Deposit £1,442.
- Holding deposit £288.
- Council tax band B
- Available Mid October



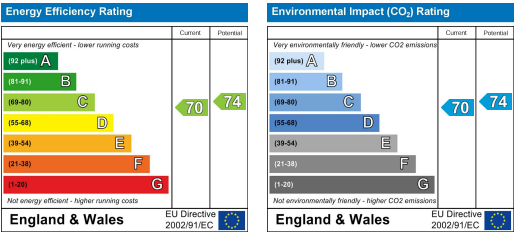
Floor Plan



Area Map



Energy Efficiency Graph



These particulars, whilst believed to be accurate are set out as a general outline only for guidance and do not constitute any part of an offer or contract. Intending purchasers should not rely on them as statements of representation of fact, but must satisfy themselves by inspection or otherwise as to their accuracy. No person in this firms employment has the authority to make or give any representation or warranty in respect of the property.