



## 68 Tylersfield

Abbots Langley, WD5 0PT

£1,250

Welcome to this charming maisonette located in the picturesque village of Abbots Langley. This delightful property boasts a cosy reception room, perfect for relaxing or entertaining guests. With one spacious bedroom, you'll have plenty of room to unwind and recharge.

The property features a well-appointed bathroom, offering both style and functionality. Whether you're getting ready for the day ahead or unwinding after a long day, this bathroom provides the perfect retreat.

Situated in a sought-after location, this maisonette offers a wonderful opportunity to enjoy village life while still being within easy reach of amenities. Tylersfield is known for its community spirit and beautiful surroundings, making it a truly special place to call home.

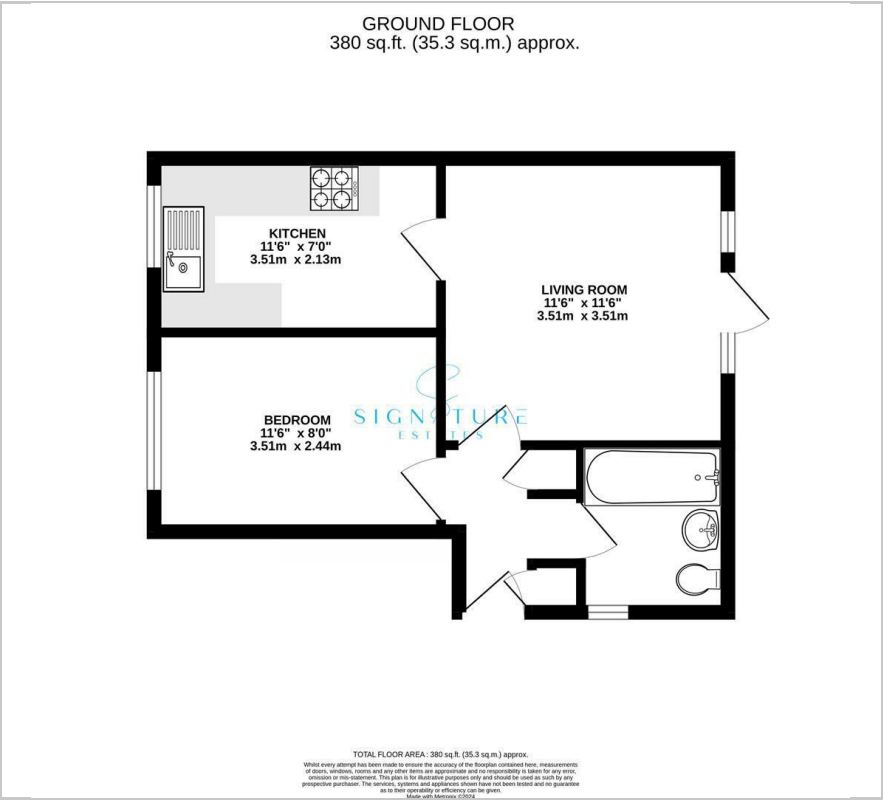
- One Bedroom Ground Floor
- Maisonette
- Great Location
- Good Size Living Space
- Walking Distance To Village
- Easy Journey Into Watford Town
- Private Garden
- Holding Deposit £288.00
- Council Tax Band C

### Viewing

Please contact our Watford Office on 01923224030 if you wish to arrange a viewing appointment for this property or require further information.



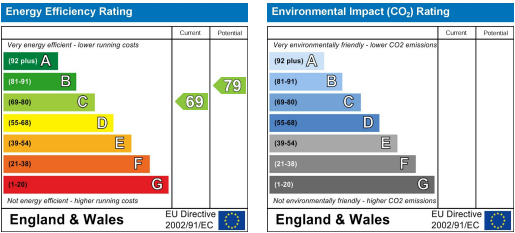
Floor Plan



Area Map



Energy Efficiency Graph



These particulars, whilst believed to be accurate are set out as a general outline only for guidance and do not constitute any part of an offer or contract. Intending purchasers should not rely on them as statements of representation of fact, but must satisfy themselves by inspection or otherwise as to their accuracy. No person in this firm's employment has the authority to make or give any representation or warranty in respect of the property.