



2 Saxton Mews, Dellfield Close

Watford, WD17 4DE

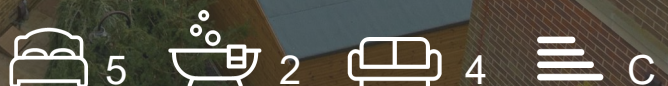
Asking Price £1,100,000

Nestled in the charming Saxton Mews on Dellfield Close, Watford, this splendid house offers an abundance of space and comfort, making it an ideal family home. With five generously sized bedrooms, there is ample room for everyone to enjoy their own private sanctuary. The property boasts five well-appointed reception rooms, providing versatile spaces that can be tailored to suit your lifestyle, whether for entertaining guests, relaxing with family, or creating a home office.

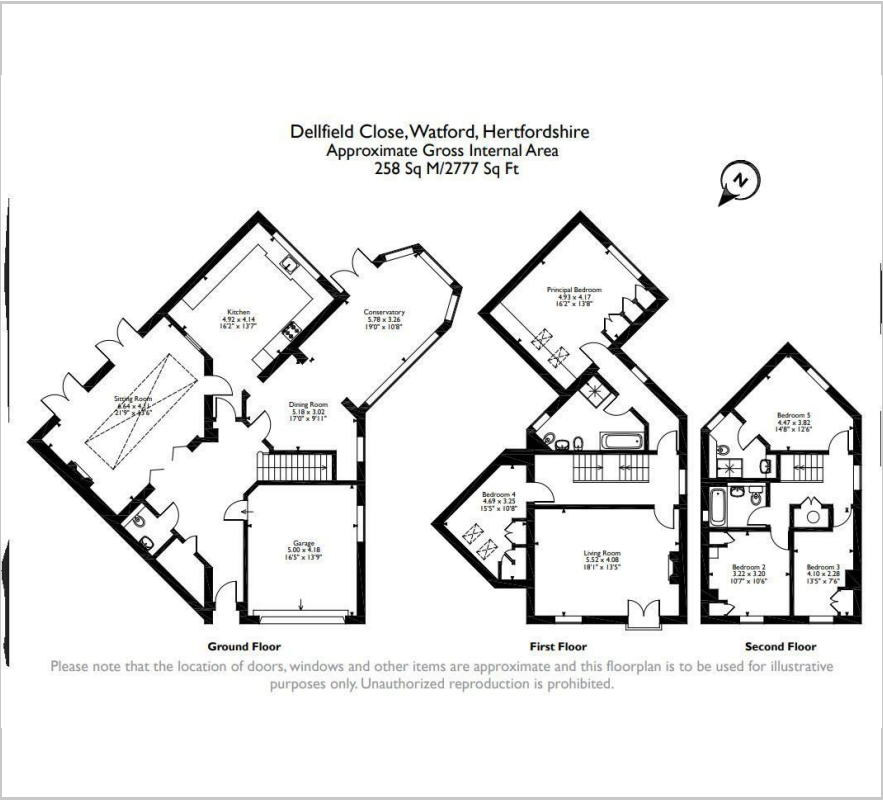
- Five/Six Bedroom Spacious Family Home
- Five Reception Rooms
- Two Bathrooms
- Garage
- Extremely Well Presented
- Attractive Enclosed Rear Garden
- Sought After Location
- Close To Town Centre
- Over 2700 Sq Ft

Viewing

Please contact our Watford Office on 01923224030 if you wish to arrange a viewing appointment for this property or require further information.



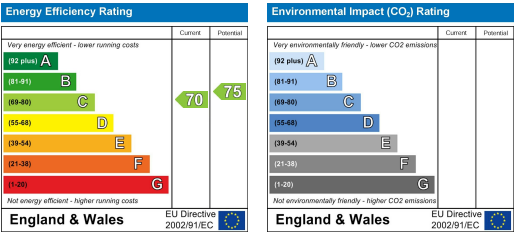
Floor Plan



Area Map



Energy Efficiency Graph



These particulars, whilst believed to be accurate are set out as a general outline only for guidance and do not constitute any part of an offer or contract. Intending purchasers should not rely on them as statements of representation of fact, but must satisfy themselves by inspection or otherwise as to their accuracy. No person in this firms employment has the authority to make or give any representation or warranty in respect of the property.