



## 14 Tantivy Court

WATFORD, WD17 2QW

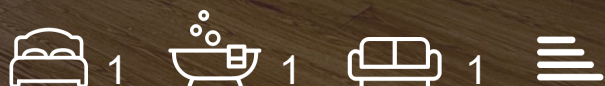
**Asking Price £250,000**

Welcome to this modern apartment located in the desirable Tantivy Court on Queens Road, Watford. This charming property offers a comfortable living space, perfect for individuals or couples seeking a convenient lifestyle.

- One Bedroom
- Separate Kitchen
- Video Entry Phone
- 0.5 miles to Watford Junction
- 0.25 miles to High St. Station
- Lift for Access
- Under Ground Parking
- NO UPPER CHAIN!

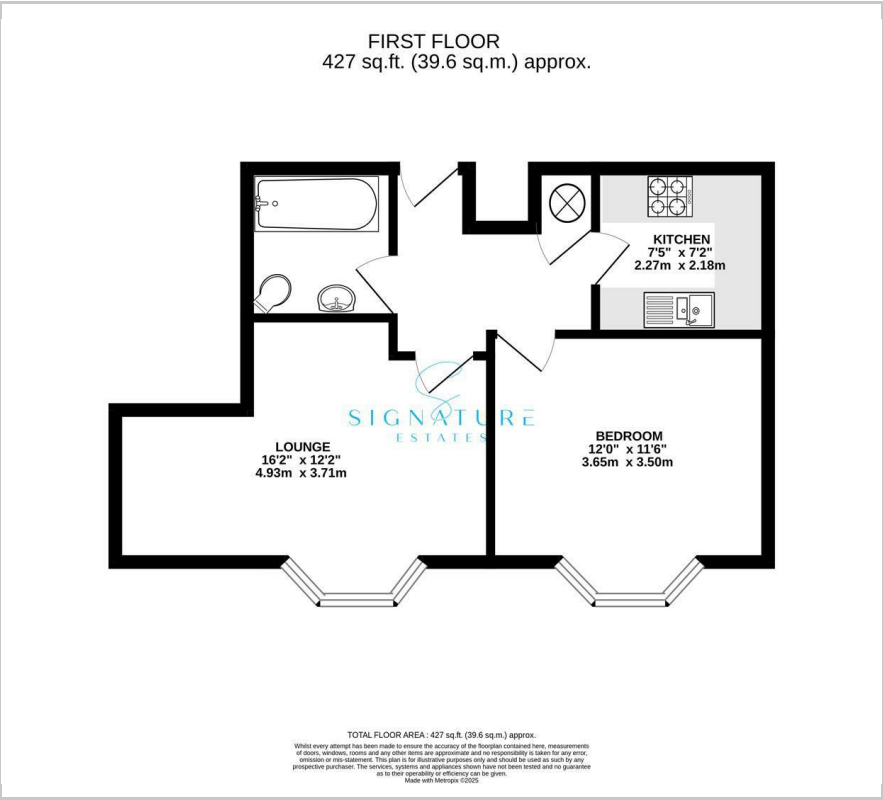
### Viewing

Please contact our Watford Office on 01923224030 if you wish to arrange a viewing appointment for this property or require further information.





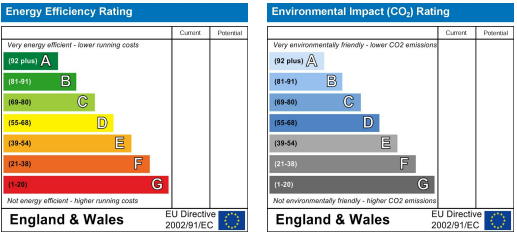
Floor Plan



Area Map



Energy Efficiency Graph



These particulars, whilst believed to be accurate are set out as a general outline only for guidance and do not constitute any part of an offer or contract. Intending purchasers should not rely on them as statements of representation of fact, but must satisfy themselves by inspection or otherwise as to their accuracy. No person in this firms employment has the authority to make or give any representation or warranty in respect of the property.