



SIGNATURE

Sandringham Road

Watford, WD24 7AY

£450,000

This charming three-bedroom mid-terraced Victorian family home on Sandringham Road offers an ideal blend of period character and modern living. Situated in the heart of North Watford, the property is within walking distance of the vibrant shops and restaurants along St Albans Road, and conveniently close to Watford North Station and Watford Junction, making it perfect for commuters.

The ground floor welcomes you with a bright and airy through-lounge, providing ample space for both a comfortable living area and dining set-up. A modern fitted kitchen leads seamlessly into a lovely double-glazed conservatory, which opens to the garden and includes a handy guest cloakroom.

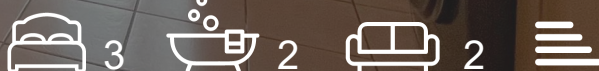
Upstairs, you'll find three well-proportioned bedrooms, all accessible from the landing, along with a fully tiled family bathroom. Presented in excellent condition throughout, this home offers plenty of space for a growing family or young couple.

With easy access to major roadways, including the M1, M25, and A41, this property is ideally situated for those who need to commute while enjoying the benefits of a thriving local community.

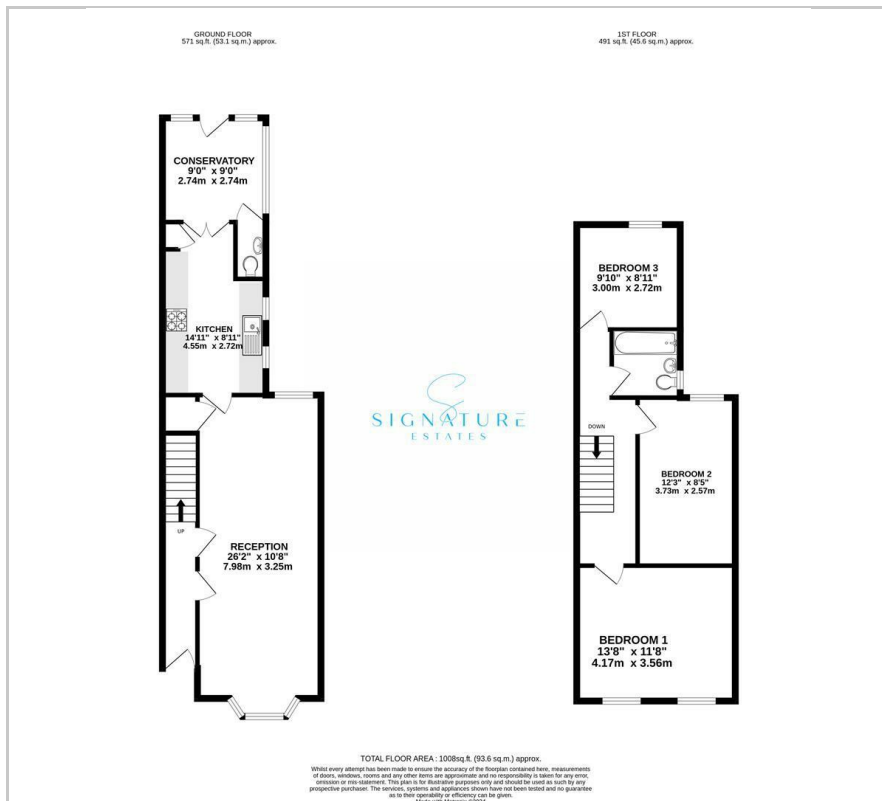
- Three double upstairs bedrooms
- Mid-terraced freehold house
- On street parking
- Private rear garden
- Modern family bathroom and downstairs WC
- Large family sized kitchen
- Open plan living and dining room
- Convenient conservatory

Viewing

Please contact our Watford Office on 01923224030 if you wish to arrange a viewing appointment for this property or require further information.



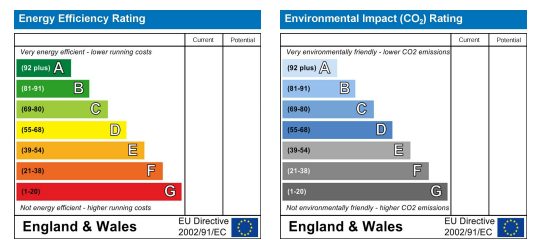
Floor Plan



Area Map



Energy Efficiency Graph



These particulars, whilst believed to be accurate are set out as a general outline only for guidance and do not constitute any part of an offer or contract. Intending purchasers should not rely on them as statements of representation of fact, but must satisfy themselves by inspection or otherwise as to their accuracy. No person in this firm's employment has the authority to make or give any representation or warranty in respect of the property.