



Flat 2 14a New Road

Watford, WD17 2EX

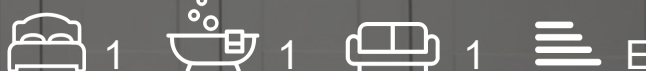
£1,350 PCM

Stunning brand new one bed flat | Spacious | Premium
Fixtures and fitting | Gorgeous kitchen with quartz worktops |
Stylish bathroom | Wooden floors | Oak doors | Central
location | Available Early September!

- Stunning new flat
- Open plan living kitchen space
- Quality fixtures and fittings
- Gorgeous kitchen
- Quartz worktops
- Stylish large bathroom
- Wooden floors
- Oak doors
- Central location
- No Parking - Can Request Permits From The Council

Viewing

Please contact our Watford Office on 01923224030
if you wish to arrange a viewing appointment for this property or
require further information.



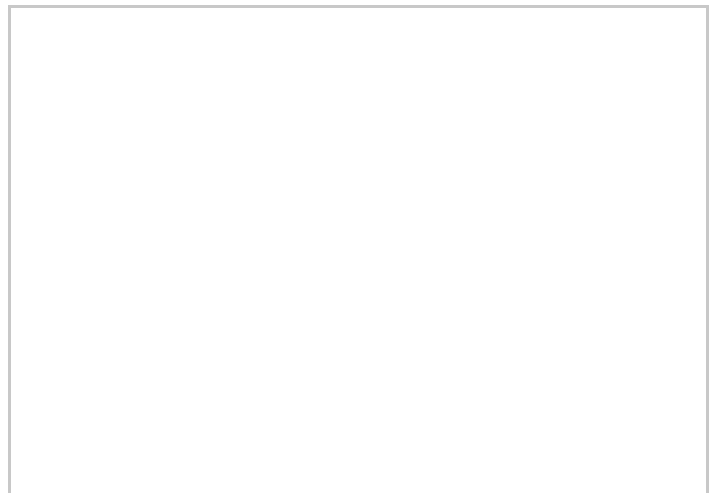
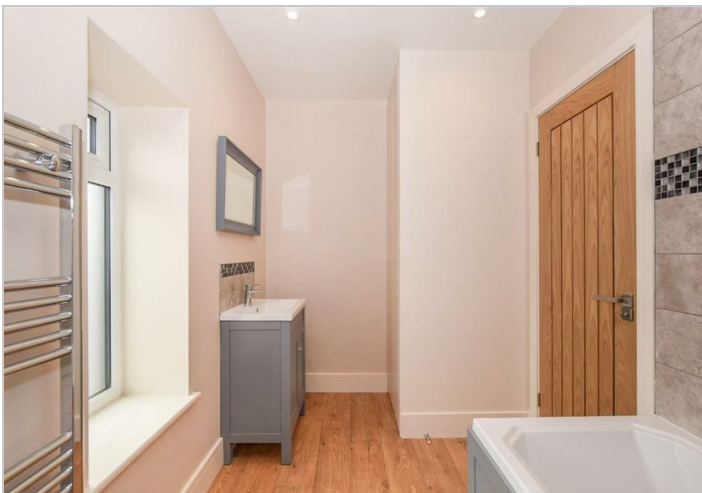
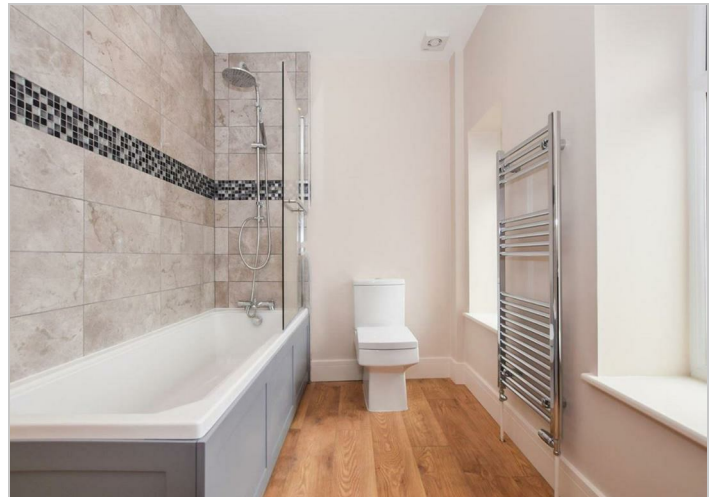
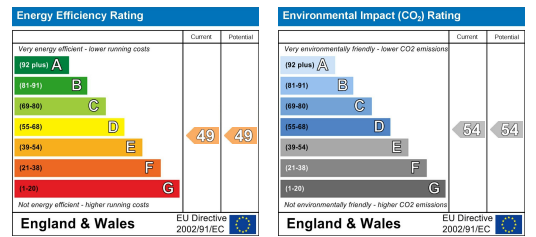
Floor Plan



Area Map



Energy Efficiency Graph



These particulars, whilst believed to be accurate are set out as a general outline only for guidance and do not constitute any part of an offer or contract. Intending purchasers should not rely on them as statements of representation of fact, but must satisfy themselves by inspection or otherwise as to their accuracy. No person in this firm's employment has the authority to make or give any representation or warranty in respect of the property.