



SIGNATURE  
ESTATES

## Bovingdon Court Windsor Close

Hemel Hempstead, HP3 0QU

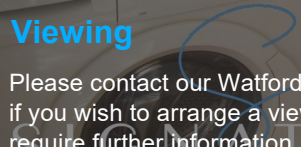
**£1,100**

Ready to move in, with great focus on detail and easy access to the popular village High Street of Bovingdon, Hertfordshire. Situated at the end of a nice cul-de-sac, you can enjoy the peace and quiet of a friendly residential location. Good sized rooms and a welcoming entrance hall make this property a lovely home, that has up to date plumbing and electric systems, modern facilities and allocated parking. Optional part-furnished with double bed and mattress, settee/sofa and more. Enquire now for more information. Available 20th September 2024.

- 1 Double Bedroom
- Ground Floor
- Allocated parking
- Redecorated
- Long-term rental
- Part-furnished optional with double bed and mattress, settee/sofa
- Ready to move in
- Deposit £1,269
- Holding Deposit £253
- Available September 2024

### Viewing

Please contact our Watford Office on 01923224030 if you wish to arrange a viewing appointment for this property or require further information.



SIGNATURE  
ESTATES



1



1



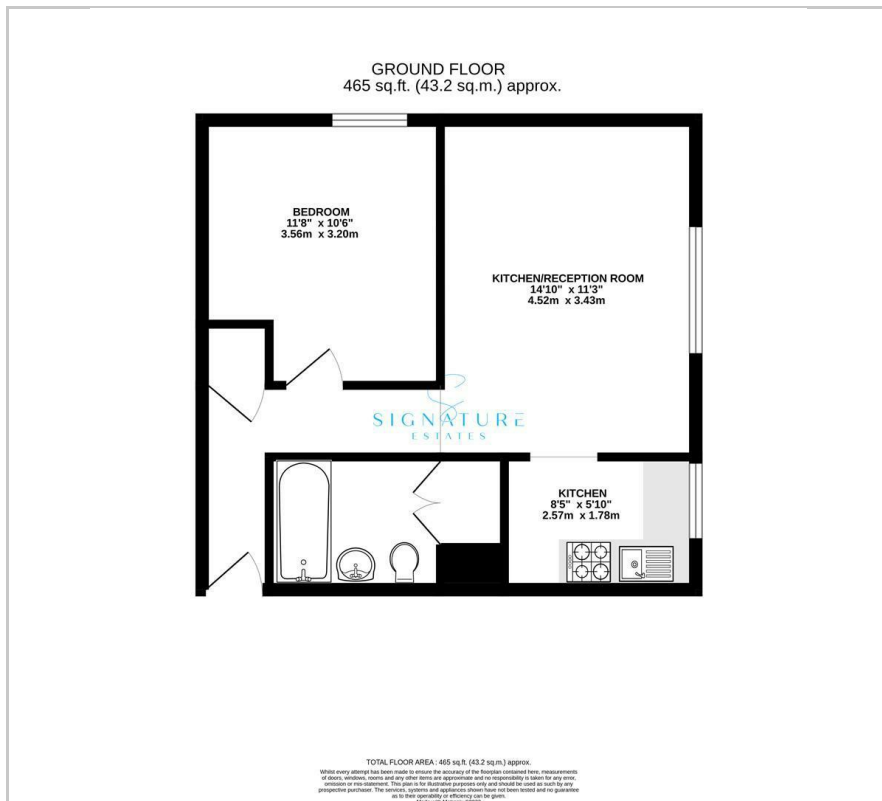
1



E



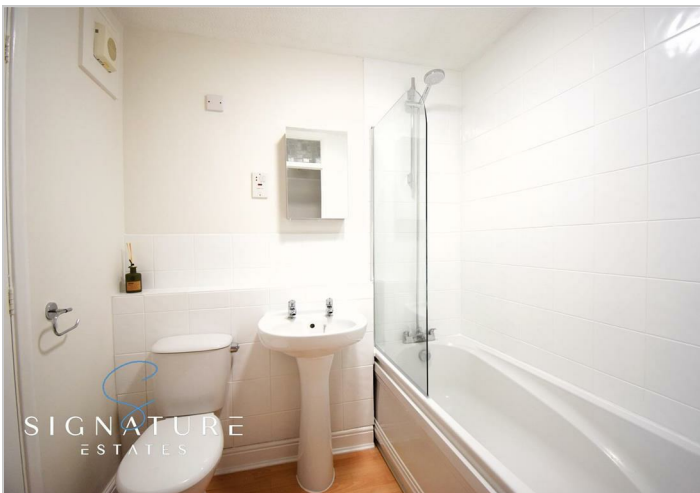
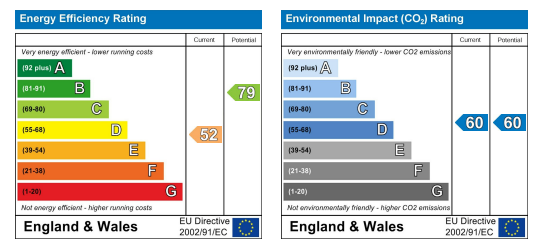
## Floor Plan



## Area Map



## Energy Efficiency Graph



These particulars, whilst believed to be accurate are set out as a general outline only for guidance and do not constitute any part of an offer or contract. Intending purchasers should not rely on them as statements of representation of fact, but must satisfy themselves by inspection or otherwise as to their accuracy. No person in this firm's employment has the authority to make or give any representation or warranty in respect of the property.