



SIGNATURE

2 Islay House

Watford, WD18 6GD

£1,150 Per Month

GROUND FLOOR! Well presented one bedroom ground floor flat located in the popular Swallows development. The property comprises: lounge, fitted modern kitchen, bathroom with shower and double bedroom. Benefits also include double glazing, communal garden and parking.

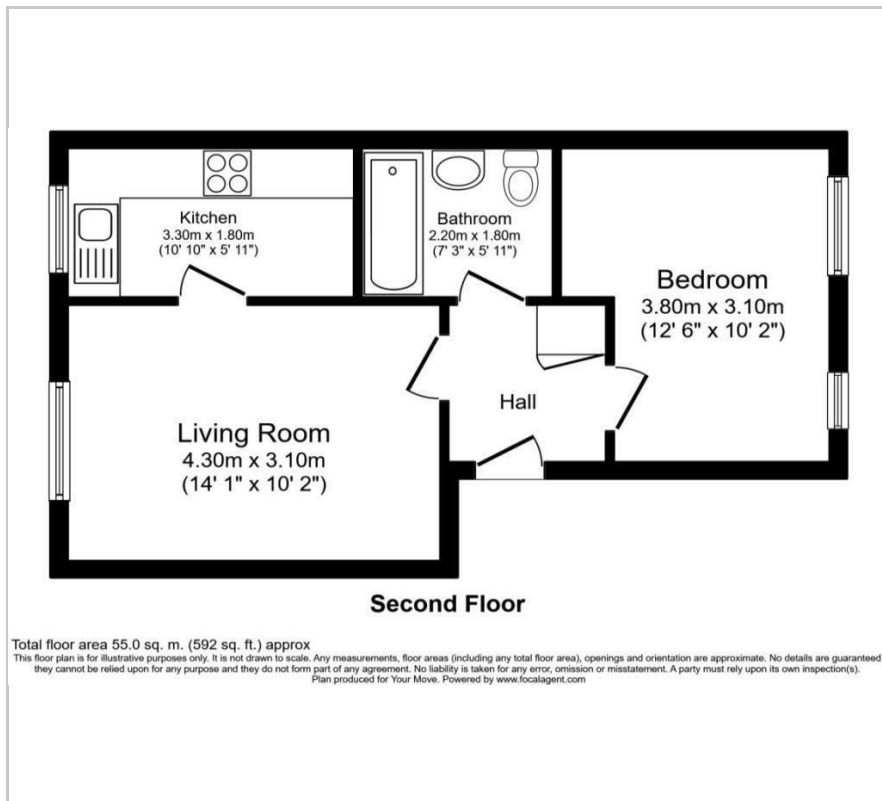
- One Bedroom Flat
- Ground Floor
- West Watford
- Close to the Hospital
- Modern Living
- Residents parking
- Holding Deposit £265.00
- Council Tax Band C

Viewing

Please contact our Watford Office on 01923224030 if you wish to arrange a viewing appointment for this property or require further information.



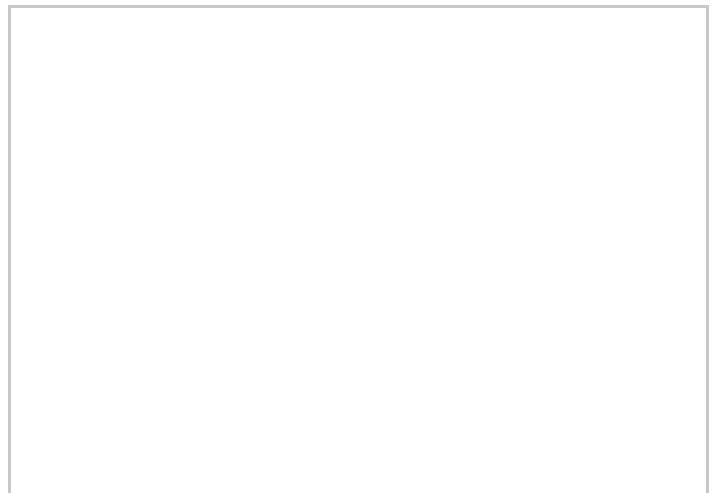
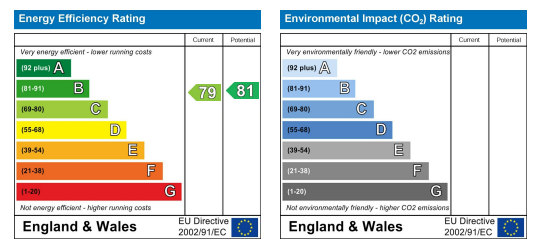
Floor Plan



Area Map



Energy Efficiency Graph



These particulars, whilst believed to be accurate are set out as a general outline only for guidance and do not constitute any part of an offer or contract. Intending purchasers should not rely on them as statements of representation of fact, but must satisfy themselves by inspection or otherwise as to their accuracy. No person in this firm's employment has the authority to make or give any representation or warranty in respect of the property.