



SIGNATURE

## Shaftesbury Road

WATFORD, WD17 2RQ

**£369,950**

Welcome to this charming three-bedroom mid-terraced house nestled in the heart of Watford town, offering a perfect blend of modern convenience and traditional charm.

As you step inside, you're greeted by a warm and inviting atmosphere. The ground floor boasts a modern kitchen, perfect for culinary endeavours, which seamlessly flows into a family shower facility, providing convenience for everyday living. The layout also includes a spacious front living room adorned with a bay window, allowing natural light to flood the space, while a separate dining area offers ample room for entertaining guests or enjoying family meals.

Venture upstairs to discover three bedrooms, all in good condition and ready to accommodate your lifestyle needs. Additionally, a large loft hatch provides easy access to storage, ensuring that space is utilized efficiently.

Outside, the property offers both front and rear gardens, providing opportunities for outdoor relaxation and recreation. The front features a bin store, maintaining tidiness, while the private rear garden offers a serene retreat for enjoying al fresco dining or simply unwinding after a busy day.

This delightful home presents an ideal opportunity for those seeking comfortable and convenient living in a prime location within Watford town. Don't miss your chance to make this property your own and experience the best of urban living combined with suburban tranquility. Schedule your viewing today!

### Viewing

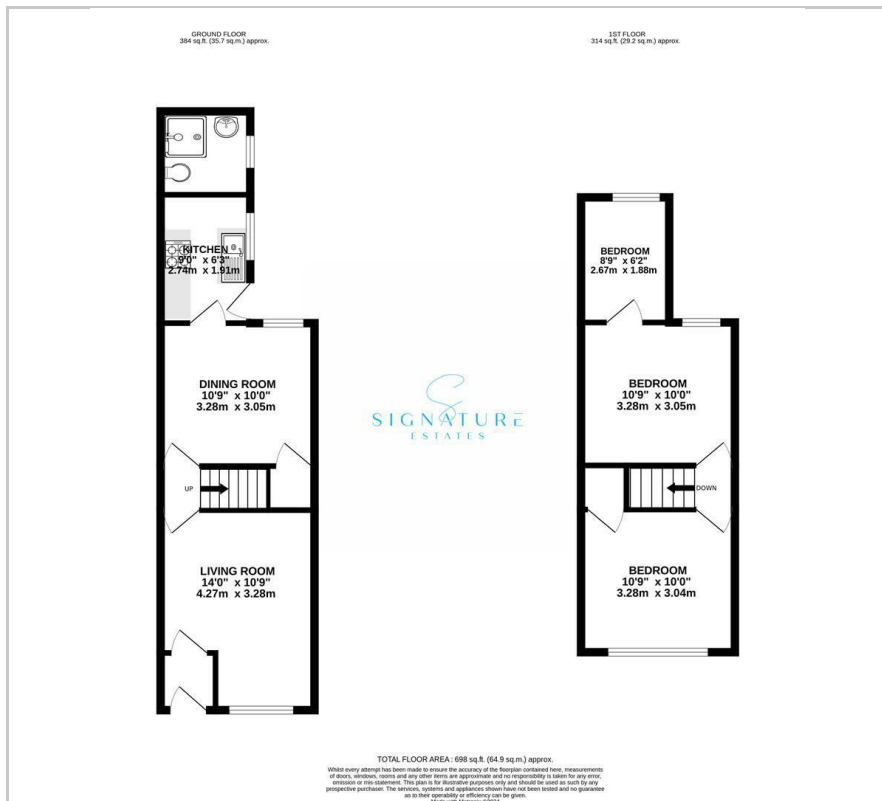
Please contact our Watford Office on 01923224030 if you wish to arrange a viewing appointment for this property or require further information.

- Three bedrooms
- Terraced House
- Great condition
- Close to Watford town centre
- Walking distance to Watford Junction
- Private rear garden and bin store
- Loft storage space with new large hatch
- Viewings recommended
- Planning permission granted at rear
- Complete chain





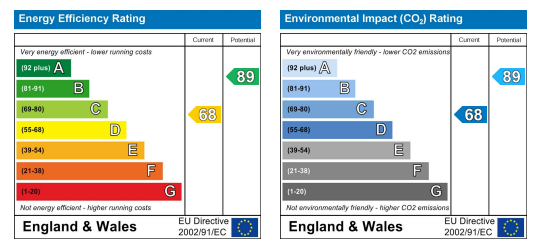
# Floor Plan



# Area Map



# Energy Efficiency Graph



These particulars, whilst believed to be accurate are set out as a general outline only for guidance and do not constitute any part of an offer or contract. Intending purchasers should not rely on them as statements of representation of fact, but must satisfy themselves by inspection or otherwise as to their accuracy. No person in this firm's employment has the authority to make or give any representation or warranty in respect of the property.

64a Queens Road, Watford, Hertfordshire, WD17 2LA

T: 01923224030 | E: info@signaturestates.co.uk | www.signaturestates.co.uk