



Sotheron Road

Watford, WD17 2QA

£465,000

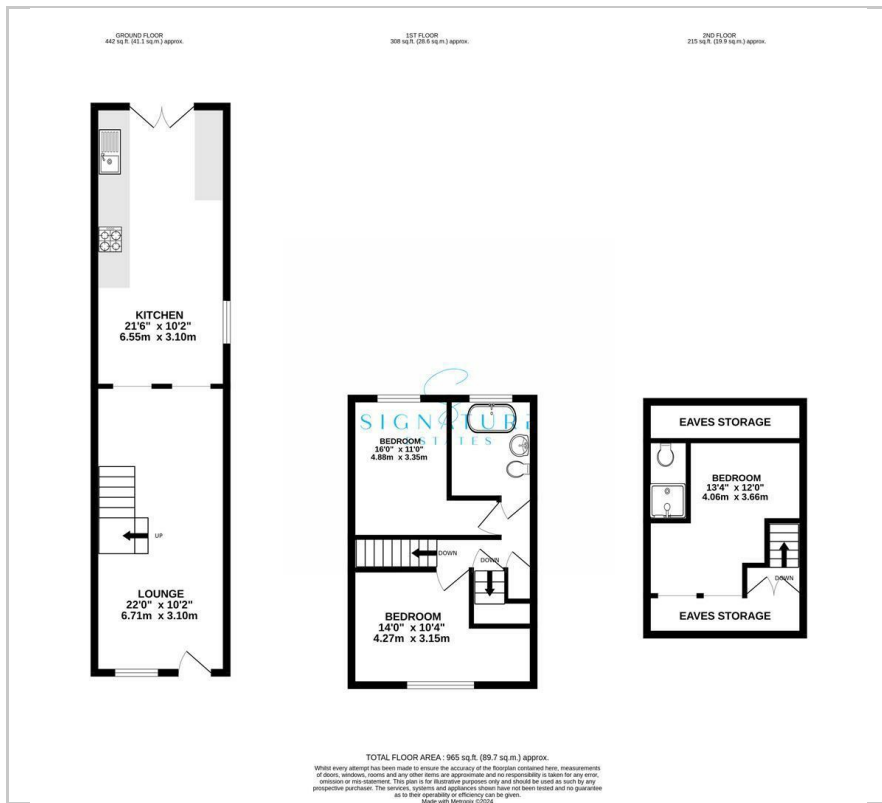
Discover the epitome of modern urban living in this meticulously upgraded three-bedroom terraced property, strategically nestled within walking distance to Watford Junction Train Station and a leisurely stroll to vibrant Watford Town. Immerse yourself in the heart of convenience and luxury as you step into a home that has been transformed for contemporary living. The extended kitchen, now a spacious culinary haven, sets the stage for culinary delights and social gatherings. Ascend to the next level of comfort with a masterful loft conversion, providing a private escape in the form of a master bedroom complete with an en suite. Embrace the perfect fusion of style, location, and practicality – your dream home awaits in the heart of Watford!

Viewing

Please contact our Watford Office on 01923224030 if you wish to arrange a viewing appointment for this property or require further information.

- Three Bedroom Family Home
- Well Kept Throughout
- Extended Kitchen
- Loft Conversion
- Walking Distance To Train Station
- Walking Distance To Watford Town
- Victorian Cottage
- Book Your Viewing Today!

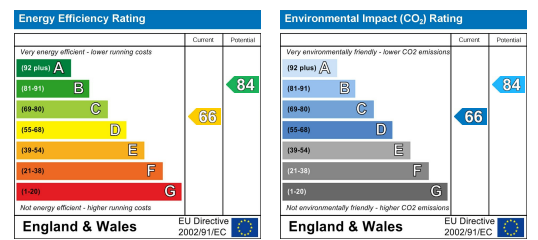
Floor Plan



Area Map



Energy Efficiency Graph



These particulars, whilst believed to be accurate are set out as a general outline only for guidance and do not constitute any part of an offer or contract. Intending purchasers should not rely on them as statements of representation of fact, but must satisfy themselves by inspection or otherwise as to their accuracy. No person in this firm's employment has the authority to make or give any representation or warranty in respect of the property.