



**Church Farm Close  
Trowbridge**

£685,000

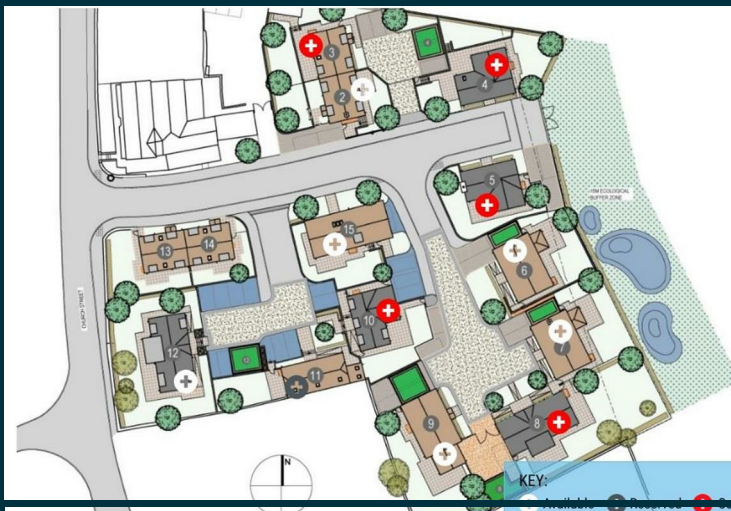
**Chase**Buchanan

## Key Features

- Detached High Specification New Home by Ashford Homes
- Four Double Bedroom Detached House
- Underfloor Heating Throughout with Individual Room Thermostats
- Luxury Kitchen with Fully Integrated Appliances
- Downstairs Home Office
- Utility Room & Cloakroom
- Bedroom One Benefits from Fitted Wardrobe & En-Suite
- Parking for Three Vehicles Including Single Parking Barn
- EV Car Charging Point
- Available to Buy Off Plan NOW

## Description

PLOT 7 - Impressive Ashford Home 4 Bed Detached House with Car Barn on Desirable Hilperton Development. Large Kitchen/Diner & Living Room with Sun Room. Available Now





# PLOTS 6 & 7

## FIRST

**Main Bedroom**  
4.18m x 4.02m  
(13'7" x 13'2")

**Bedroom 2**  
2.96m x 3.44m  
(9'7" x 11'3")

**Bedroom 3**  
2.95m x 3.29m  
(9'7" x 11'0")

**Bedroom 4**  
2.96m x 2.76m  
(9'7" x 9'1")

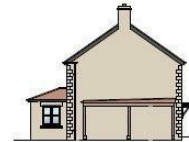
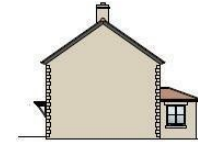
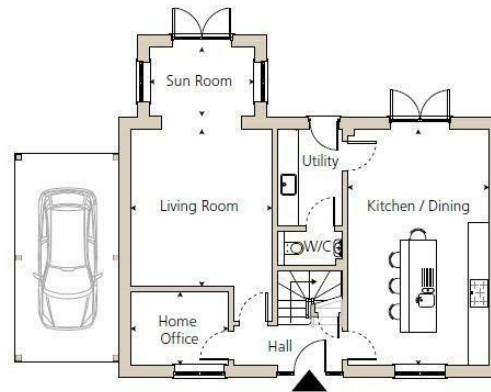
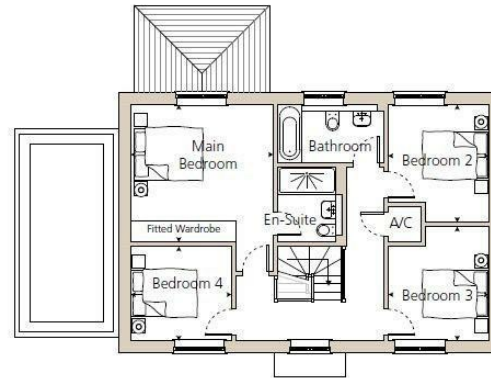
## GROUND

**Kitchen / Dining**  
4.15m x 6.90m  
(13'6" x 22'6")

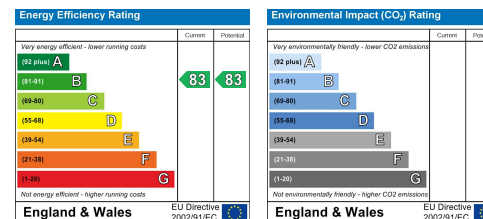
**Living Room**  
4.15m x 4.60m  
(13'6" x 15'1")

**Home Office**  
2.88m x 2.15m  
(9'4" x 7'1")

**Sun Room**  
3.08m x 2.03m  
(10'1" x 6'7")



Care has been taken in the preparation of these particulars, however, their accuracy is not guaranteed and they do not form part of any contract. Measurements stated must be considered maximum.



For more information or to book a viewing, please contact:

**01225 341504**

trowbridge@chasebuchanan.co.uk

63 Fore Street, BA14 8ET

**ChaseBuchanan**