



**Church Farm Close  
Trowbridge**

£435,000

**Chase**Buchanan

## Key Features

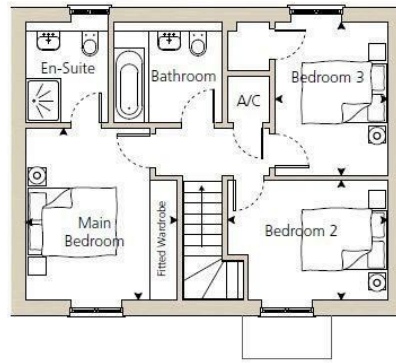
- High Specification New Home by Ashford Homes
- Three Bedroom Semi-Detached House
- Underfloor Heating Throughout with Individual Room Thermostats
- Luxury Fitted Kitchen with Fully Integrated Appliances
- Open Plan Living Area with Doors opening on to the Garden
- Downstairs Cloakroom
- Main Bedroom Benefits from Fitted Wardrobes and En-Suite
- Private Parking for Two Cars
- EV Car Charging Point
- Available to Buy Off Plan NOW

## Description

PLOT 2 - Ashford Homes New Build 3 Bed Semi Detached House in Desirable Village Location with Enclosed Front & Rear Gardens & Off Street Parking. Available Now.







# PLOTS 2 & 3

## FIRST

**Main Bedroom**  
3.45m x 3.90m  
(11'3" x 12'8")

**Bedroom 2**  
3.64m x 2.71m  
(11'9" x 8'9")

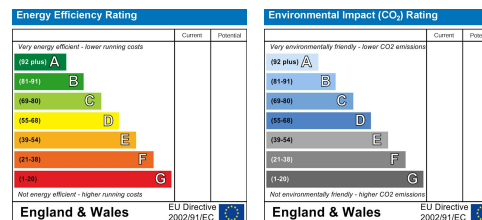
**Bedroom 3**  
2.45m x 3.47m  
(8'4" x 11'4")

## GROUND

**Kitchen / Dining**  
3.43m x 6.30m  
11'3" x 20'7"

**Living Room**  
4.83m x 4.15m  
15'8" x 13'6"

Care has been taken in the preparation of these particulars, however, their accuracy is not guaranteed and they do not form part of any contract. Measurements stated must be considered maximum.



For more information or to book a viewing, please contact:

**01225 341504**

trowbridge@chasebuchanan.co.uk

63 Fore Street, BA14 8ET

**ChaseBuchanan**