







This delightful 5 bedroom semi-detached house could be the ideal family home if you are looking for spacious accommodation and want to live in a really convenient location. The sense of space is enhanced with the tall ceilings and the owners have extended the property, creating a fabulous large modern fitted kitchen and a master bedroom and shower room on the top floor.

On the ground floor there is a cloakroom off the spacious entrance hall, two good size reception rooms and the kitchen has plenty of space for a dining/kitchen table. On the first floor are four bedrooms and a family bathroom. The loft was converted to create the master bedroom and shower room about 7 years ago.

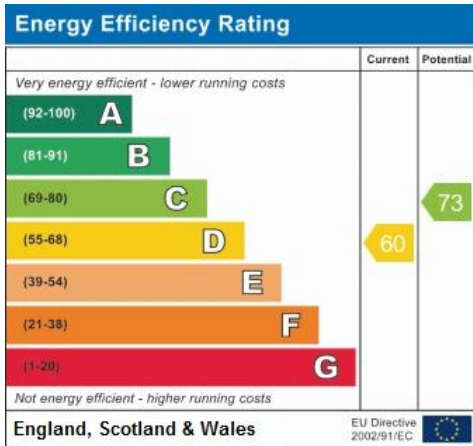
The front has been paved to allow off street parking and there is an integral single garage. The 60' rear garden has the benefit of a southerly aspect garden.

In terms of location you are very well placed with a convenience store around the corner in Freeland Road and Bromley High Street only half a mile. For stations Bromley North is also half a mile and Bromley South is a mile. Scotts Park Primary school is only 0.2 of a mile as is St Josephs Roman Catholic Primary school. Bullers Wood Secondary school for Girls is a mile as is the new Boys school.

A lovely family home that is well worth viewing.







Please refer to

[www.jdmestateagents.com](http://www.jdmestateagents.com)

to view our full area guides



# Upper Park Road, Bromley, BR1

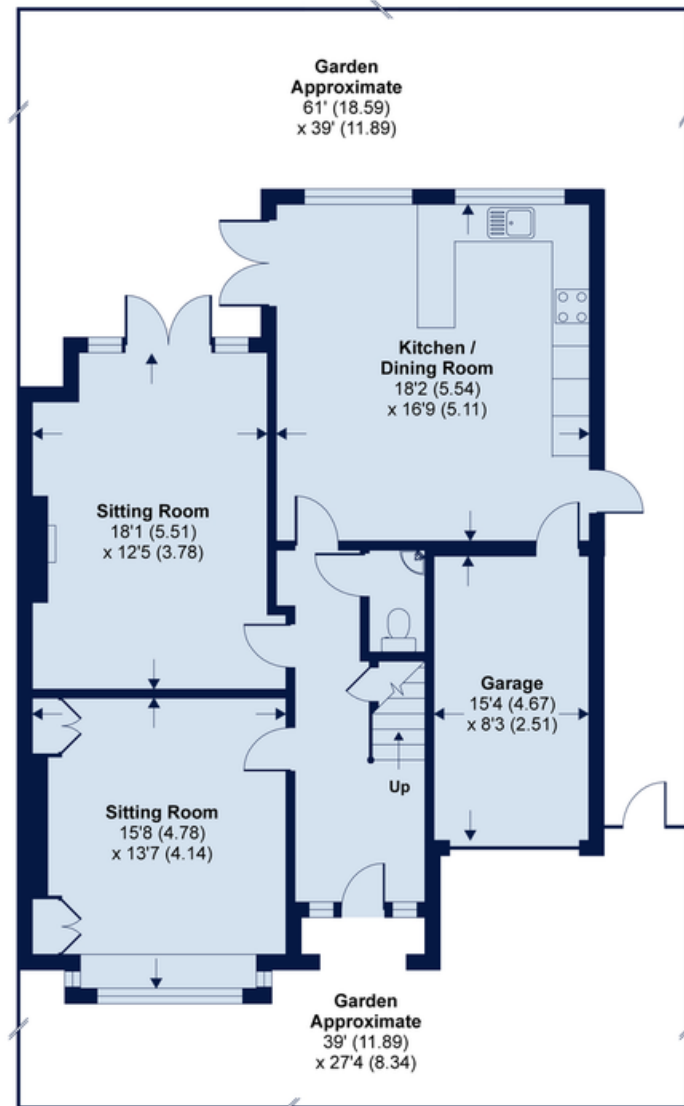
Approximate Area = 2153 sq ft / 200 sq m (includes garage)

Limited Use Area(s) = 40 sq ft / 3.7 sq m

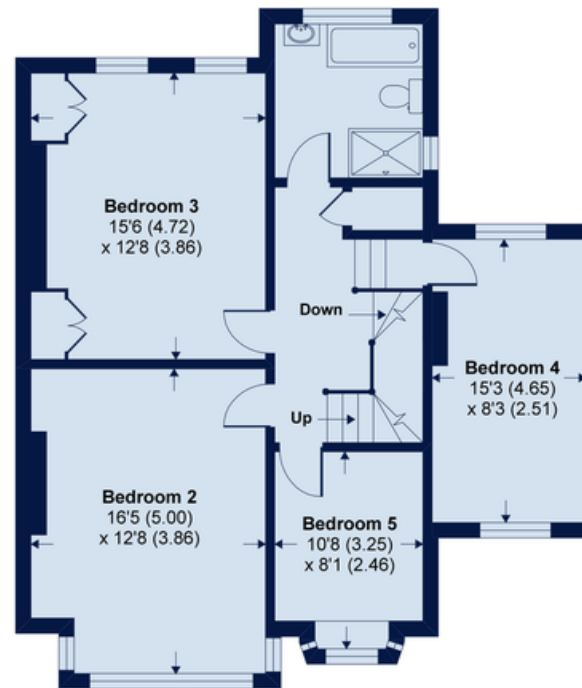
Total = 2193 sq ft / 213.7 sq m

For identification only - Not to scale

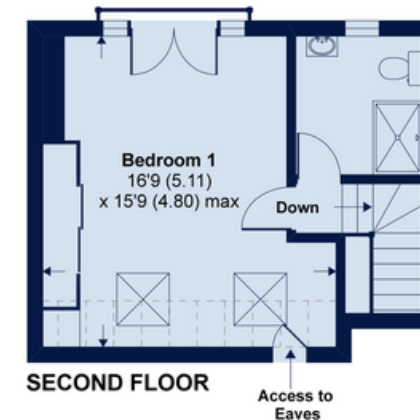
Denotes restricted  
head height



GROUND FLOOR



FIRST FLOOR



SECOND FLOOR



Floor plan produced in accordance with RICS Property Measurement Standards incorporating International Property Measurement Standards (IPMS2 Residential). © nichecom 2020. Produced for JDM Estate Agents. REF: 671766

